



Warning



IMPORTANT: Please read the following information prior to removing the battery described below.

The page below contains instructions regarding removal of batteries required for compliance with EU Directive 2006/66/EC as amended.

The instructions below describe a battery that should not be removed by a customer. If a battery may be safely removed by a customer, instructions for removal are provided with the product or in the online user guide.

Do not attempt to remove the battery as described on the page below unless you are a qualified professional. These instructions are for use only by qualified professionals who have an understanding of the risks involved in handling batteries and skill in safely managing those risks independently. These instructions provide information on the location of the battery and the product enclosure to allow a qualified professional to find and remove the battery. These instructions do not describe all the steps, risks, and precautions that should be considered for safe handling of the described battery. If you are uncertain regarding safe battery removal and handling, you should not attempt to remove the battery. As a general precaution, it is recommended to operate the product containing the battery until the product no longer functions prior to attempting to remove the battery. Note that some charge may remain even if the product is no longer functioning.

Accessing and handling the battery may present a risk of fire or chemical burn. Unlike batteries intended to be handled by customers, the battery described on the page below may have an enclosure that may be more easily punctured or damaged than a battery intended for handling by customers.

The battery is not replaceable by a customer or a professional service provider unless the instructions below expressly described it as replaceable. Providing these instructions does not expressly or implicitly modify in any way the warranty that came with the product.

You must dispose of any battery you remove in accordance with applicable laws and regulations.

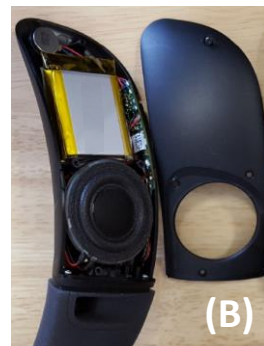
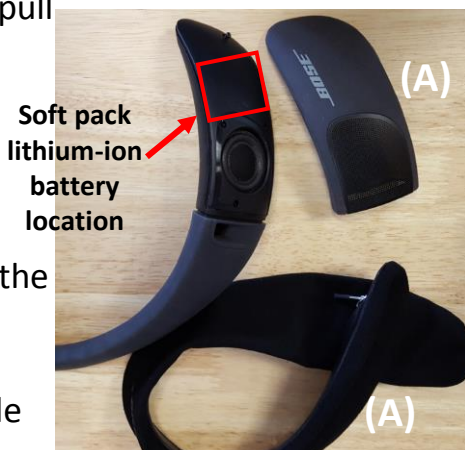
SoundWear™ Companion® speaker

(A) Remove the cloth cover and pull off the end boot.

Note the soft pack lithium-ion battery location.

(B) Remove the shell piece over the battery location.

Avoid damaging the battery while removing these pieces of the product.

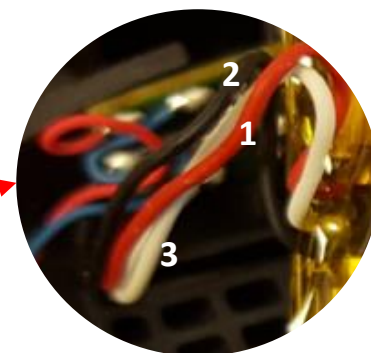


(C) Carefully remove the battery which is held in place by double-sided tape.

Cut wires in this order:

- 1) Red - Positive (+)
- 2) Black - Negative (-)
- 3) White

As each wire is cut, place electrical tape over each wire end as shown in (D) below.



(D) Removed battery shown.

Dispose of the soft pack lithium-ion battery and the remainder of the product in accordance with local regulations.

