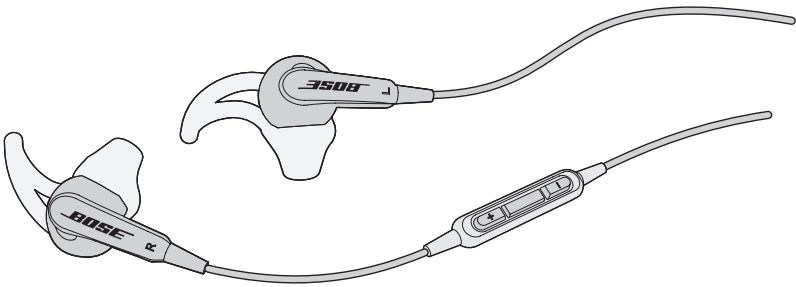


BOSE[®]



Bose[®] SoundSport[®]

in-ear headphones

designed for Samsung Galaxy devices and select Android™ devices

Owner's Guide | Brugervejledning | Bedienungsanleitung | Gebruikershandleiding
Guía del usuario | Käyttöohje | Notice d'utilisation | Manuale di istruzioni
Kezelési útmutató | Brukerveiledning | Podręcznik użytkownika | Bruksanvisning
คู่มือผู้ใช้ | 사용자 안내서 | 用户指南 | 使用者指南 | オーナーズガイド | دليل المالك

Important Safety Instructions

Please read this owner's guide carefully and keep for future reference.



WARNINGS:

- **DON'T** use the headphones at a high volume for any extended period.
 - To avoid hearing damage, use your headphones at a comfortable, moderate volume level.
 - Turn the volume down on your device before placing the headphones in your ears, then turn the volume up gradually until you reach a comfortable listening level.
- **DO** use caution and follow applicable laws regarding mobile phone and headphone use if using the headphones for phone calls while driving. Some jurisdictions impose specific limitations, such as single earpiece configuration, on the use of such products while driving.
- **DON'T** use the headphones for any other purpose while driving.
- **DO** focus on your safety and that of others if you use the headphones while engaging in any activity requiring your attention, e.g., while riding a bicycle or walking in or near traffic, a construction site or railroad, etc. Remove the headphones or adjust your volume to ensure you can hear surrounding sounds, including alarms and warning signals.
- **DON'T** use mobile phone adapters to connect headphones to airplane seat jacks, as this could result in personal injury such as burns or property damage due to overheating.
- **DO** remove headphones and disconnect immediately if you experience a warming sensation or loss of audio.
- **DON'T** submerge or expose for extended period to water, or wear while participating in water sports, i.e. swimming, waterskiing, surfing, etc. Exposure to moisture may increase the risk of fire or electric shock.
- **DON'T** place naked flame sources, such as lighted candles, near the product.



WARNING: Contains small parts which may be a choking hazard. Not suitable for children under age 3.



WARNING: This product contains magnetic material. Contact your physician if you have questions on whether this might affect the operation of your implantable medical device.



This product conforms to all applicable EU directive requirements. The complete declaration of conformity can be found at www.Bose.com/compliance



This symbol means the product must not be discarded as household waste, and should be delivered to an appropriate collection facility for recycling. Proper disposal and recycling helps protect natural resources, human health and the environment. For more information on disposal and recycling of this product, contact your local municipality, disposal service, or the shop where you bought this product.

Names and Contents of Toxic or Hazardous Substances or Elements						
Toxic or Hazardous Substances and Elements						
Part Name	Lead (Pb)	Mercury (Hg)	Cadmium (Cd)	Hexavalent (CR(VI))	Polybrominated Biphenyl (PBB)	Polybrominated diphenylether (PBDE)
PCBs	X	O	O	O	O	O
Metal parts	X	O	O	O	O	O
Plastic parts	O	O	O	O	O	O
Speakers	X	O	O	O	O	O
Cables	X	O	O	O	O	O
This table is prepared in accordance with the provisions of SJ/T 11364. O: Indicates that said hazardous substance contained in all of the homogeneous materials for this part is below the limit requirement of GB/T 26572. X: Indicates that said hazardous substance contained in at least one of the homogeneous materials used for this part is above the limit requirement of GB/T 26572.						

Samsung Galaxy is a trademark of Samsung Electronics Co., Ltd.

Android is a trademark of Google Inc.

©2015 Bose Corporation. No part of this work may be reproduced, modified, distributed, or otherwise used without prior written permission.

Introduction

About your Bose® SoundSport® in-ear headphones.....	4
Features	4
Carton contents	5

Using the headphones

Connecting to your device	6
Using the headphones with your device.....	6
Headphone controls	6
Basic functions	7
Media playback functions	7
Importance of proper fit	8
Fitting the headphones to your ear	8
Changing the eartips	9
Adjusting for comfort and stability.....	10
Using the clothing clip	10
Using a single eartip.....	10

Care and Maintenance

Troubleshooting	11
Cleaning.....	12
Limited warranty	12

Please complete and retain for your records:

The serial and model numbers can be found on the warranty card.

Serial number _____

Purchase date _____

We suggest you keep your receipt with this owner's guide.

Introduction

About your Bose® SoundSport® in-ear headphones

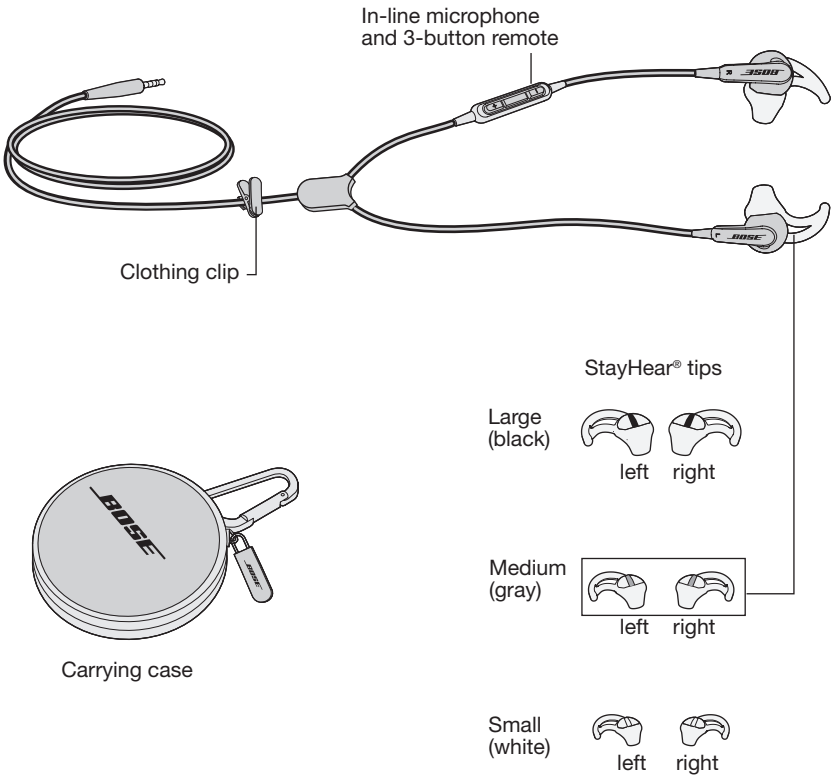
The Bose® SoundSport® in-ear headphones offer full, balanced sound that conventional sports earbuds can't match.

Features

- Exclusive TriPort® technology delivers natural-sounding lows, even at higher volumes.
- Sweat and weather-resistant.
- Proprietary StayHear® tips conform to your ear shape, so they stay comfortably in place even during long, vigorous exercise.
- Lightweight, durable carrying case stores and protects headphones.
- Inline microphone and remote provide control for Samsung Galaxy and select Android devices.
- Engineered and tested for lasting quality and durability.
- Available in different colors to fit your style.

Carton contents

Carefully unpack the carton and confirm that the following parts are included:

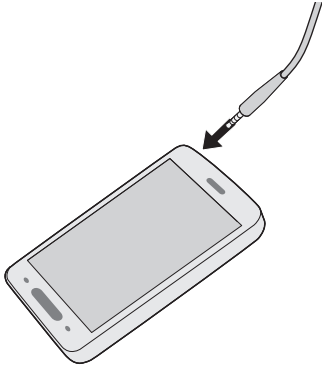


Note: The headphones come with medium (gray) StayHear® tips attached.

Using the headphones

Connecting to your device

Attach the headphone cable to the standard 3.5 mm headphone connector on your device.

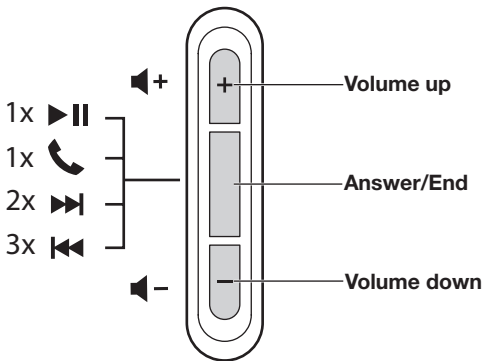


Using the headphones with your device

The Bose® SoundSport® in-ear headphones come with an inline microphone and 3-button remote.

Note: The robot image on the back of the remote indicates that these headphones are designed for use with Samsung Galaxy devices and select Android devices. Full controls may not be available for some models or applications. Refer to your device user's guide to see if remotes work with your model.

Headphone controls



Basic functions

Increase volume	Press and release the + button.
Decrease volume	Press and release the – button.
Answer a call	When you receive an incoming call, press and release the Answer/End button to answer.
End a call	Press and release the Answer/End button.
Decline an incoming call	Press and hold the Answer/End button for about two seconds, then release.
Switch to an incoming or on-hold call and put the current call on-hold	While on a call, press and release the Answer/End button once. Press and release again to switch back to the first call.
Switch to an incoming or on-hold call and end the current call	While on a call, press and hold the Answer/End button for about two seconds, then release.
Use Voice Control	Press and hold the Answer/End button. For more information on Voice Control, refer to your device user's guide.

Media playback functions

Play or pause a song or video	Press and release the Answer/End button.
Skip forward	Press and release the Answer/End button twice quickly.
Skip backward	Press and release the Answer/End button three times quickly.

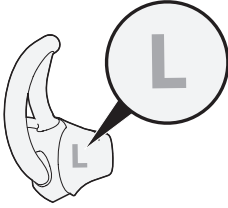
Using the headphones

Importance of proper fit

For optimum audio performance, it is important to choose the correct size StayHear® tip. Select the size that gives you the best comfort and fit in each ear. You may need to try all three sizes to determine the best fit.

Note: To test the fit, try speaking aloud. Your voice should sound muffled in both ears. If not, select another tip size.

Each tip is marked with either an L or an R. Be sure to attach the left tip (L) to the left earpiece and the right tip (R) to the right earpiece.



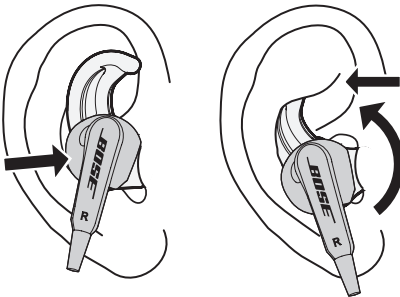
Fitting the headphones to your ear

The StayHear® tip allows the earpiece to rest comfortably in the bowl of your ear. The wing part of the tip fits just under your ear ridge.

To determine if the tip is the right size:

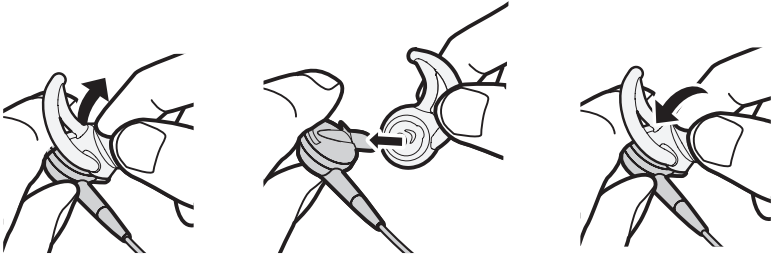
1. Insert the headphone into the ear so the tip gently rests in the opening of the ear canal.
2. Tilt the headphone back and press the tip wing under the ear ridge until it is secure.

The tips should fit comfortably yet securely in the bowl of the ear.



Changing the eartips

1. Gently peel the edges of the attached tip away from the earpiece, using care not to tear the tip.
Caution: To prevent damage, do not pull on the StayHear® tip wing.
2. Position the opening of the new tip over the nozzle and the small slot over the nozzle hook.
3. Ease the base of the tip down around the base of the earpiece until the tip feels secured.



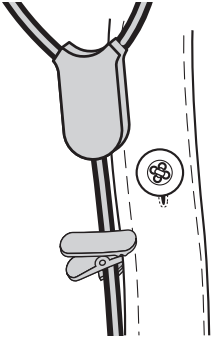
Using the headphones

Adjusting for comfort and stability

You can adjust your headphones to provide additional comfort and stability. You can customize how you wear your headphones using the clothing clip.

Using the clothing clip

Use the clothing clip to fasten the cable to your clothing, for convenience, stability, and to help manage the cable. This can be helpful during high-movement activities or when using the headphones in a single earpiece configuration.



Using a single earpiece

The Bose® SoundSport® in-ear headphones can be used with only the right (R) earpiece in your ear. This allows you to take calls and still hear surrounding sounds.

Troubleshooting

If you experience any trouble using your headphones, try the following troubleshooting instructions.

Problem	What to do
No audio/intermittent audio	<ul style="list-style-type: none"> • Securely connect the headphone cable to the 3.5 mm headphone connector on your device. • Try another eartip size. • Try another device.
Excessive bass	<ul style="list-style-type: none"> • Turn off any audio enhancement features on the audio source.
Microphone is not picking up sound	<ul style="list-style-type: none"> • Make sure you are using a compatible device. Note: Full controls may not be available for some models or applications. Refer to your device user's guide to see if remotes work with your model. • Securely connect the headphones plug to the headphone input. • Make sure the microphone opening on the back of the Answer/End button is not blocked. • Try another phone call. • Try another device.
Device is not responding to remote (button) presses	<ul style="list-style-type: none"> • Securely connect the headphone cable to the 3.5 mm headphone connector on your device. • For multi-press functions: Vary speed of presses.
Device is not responding to remote	<ul style="list-style-type: none"> • Full controls may not be available for some devices.
Eartips falling off	<ul style="list-style-type: none"> • Securely attach the eartips to the earpiece and nozzle hook.
Lost eartip	<ul style="list-style-type: none"> • Contact Bose® for replacement tips.
Sound is muffled from earpiece	<ul style="list-style-type: none"> • Clear any debris or wax build-up from the eartips and headphones nozzles. • Unplug the headphones from the audio source, then plug back in making sure they are securely connected. • Try another device.

Care and Maintenance

Cleaning

Your headphones may require periodic cleaning:

Eartips: Remove the eartips from the headphones. Wash them with a mild detergent and water. Make sure you thoroughly rinse and dry them before putting them back on the headphones.

Headphone nozzles: Clean only with a dry, soft cotton swab or equivalent. Never insert any cleaning tool into the nozzle.

Limited warranty

The Bose® SoundSport® in-ear headphones are covered by a limited warranty. Details of the limited warranty are provided on the product registration card that is included in the carton. Please refer to the card for instructions on how to register. Failure to register will not affect your limited warranty rights.

The warranty information provided with this product does not apply in Australia and New Zealand. See our website at www.bose.com.au/warranty or www.bose.co.nz/warranty for details of the Australia and New Zealand warranty.



743729-0010

BOSE[®]
Better sound through research[®]

©2015 Bose Corporation, The Mountain,
Framingham, MA 01701-9168 USA
AM743729 Rev. 01