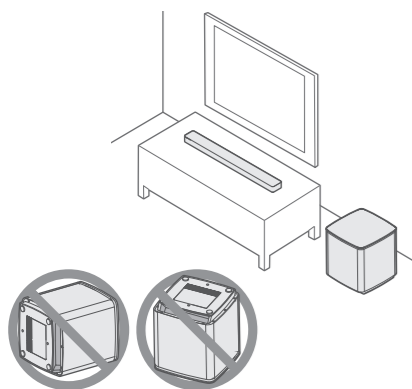


1

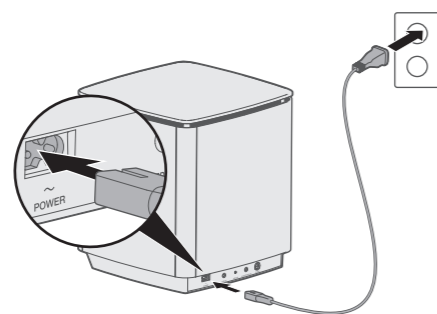


Place the bass module

Keep at least 1 – 3 ft. (0.3 – 0.9 m) away from other wireless equipment.

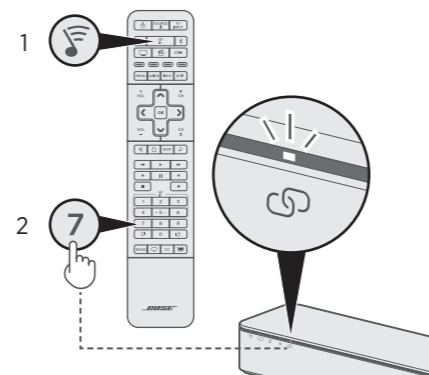
Note: Adding a second bass module?
Refer to the owner's guide.
Visit: global.Bose.com/Support/AM300

2






Connect to power

3



Pair with a SoundTouch® 300 soundbar

1. On the SoundTouch® 300 remote, press .
2. Press and hold **7** until  on the soundbar blinks white.
Once paired, the system emits a tone and  glows white.

Note: Pairing may take several minutes.



global.Bose.com/Support/AM300



800136-0010



Better sound through research®
©2017 Bose Corporation, The Mountain,
Framingham, MA 01701-9168 USA
AM800136 Rev. 00



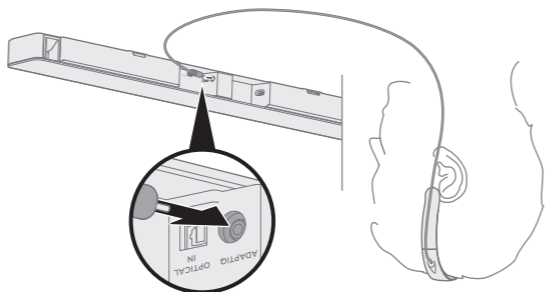
ACOUSTIMASS® 300

START HERE

Please read and keep all safety and use instructions.

Set up ADAPTiQ® audio calibration

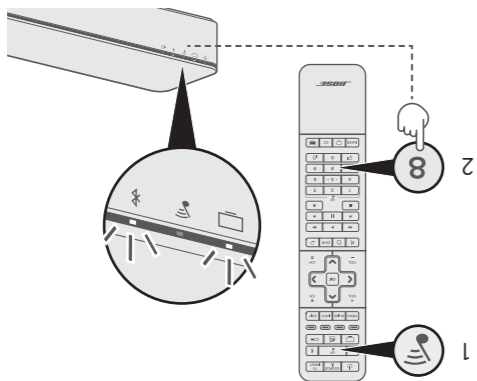
1. Plug the headset into the soundbar.
2. Put on the ADAPTiQ® headset (provided with the soundbar), complete pairing before running ADAPTiQ audio calibration.



4

Run ADAPTiQ® audio calibration

1. On the remote control, press .
 2. Press and hold until and on the soundbar glow green.
- Note:** To cycle through languages, press and on the navigation pad.



5