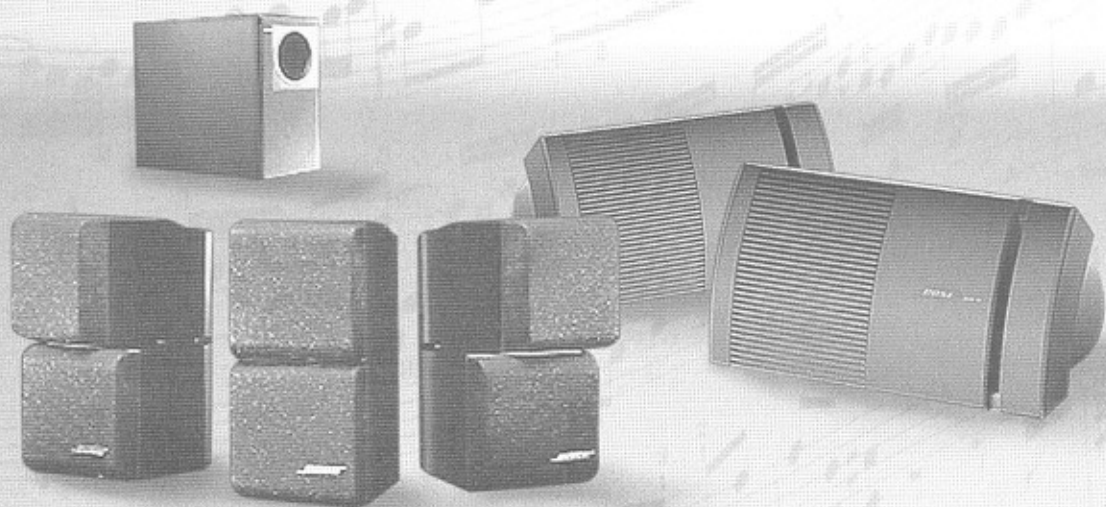


Bose® Acoustimass® 700
Home Theater Speaker System

Owner's Guide

BOSE



Thank you

Thank you for choosing the Bose® Acoustimass® 700 home theater speaker system. It includes five speakers and an Acoustimass module, brackets for the surround speakers, speaker cable, and protective rubber feet. This package is designed for use with audio for video (A/V) surround sound components that have five amplified speaker outputs.

Acoustimass speaker technology, known for producing bold, lifelike sound, allows you to hide the Acoustimass module from sight, so the front and center channel sound appears to come from the cube speaker arrays alone. The surround speakers feature the 4.5-inch StarDriver™ full-range driver, which delivers a performance usually associated with much larger speakers.

Quality construction, advanced technologies, and convenience make the Acoustimass 700 speaker system a superior choice for full listening enjoyment. This system is also significantly different from conventional speakers, so be sure to read this guide. It will help you set up and use your speakers properly.

For your records

A serial number is located near the connection panel on the Acoustimass module. The date of manufacture (DOM) is printed on the back of both surround speakers.

Acoustimass module serial number: _____

Surround speaker DOM: _____

Dealer name: _____

Dealer phone: _____ Purchase date: _____

We suggest you keep your sales slip and warranty card together with this owner's guide.


Where to find...

Setting Up	
Before you begin	4
Unpack the carton	4
Placing your Acoustimass® 700 speakers to achieve realistic home theater sound	5
Selecting the locations for your speakers	6
Connect the speakers	8
Cube speakers	9
Surround speakers	9
Acoustimass module	10
Check connections	11
Using Your Acoustimass 700 speakers	
For realistic home theater sound	12
Setting your Dolby Pro-Logic receiver	12
Setting your Dolby Digital (AC-3) receiver	13
Bass and treble adjustments	13
Maintaining Your Acoustimass 700 speakers	
How to clean your speakers	14
Troubleshooting problems	14
Customer Service	15
Product Information	
Warranty period	16
Technical information	16
Accessories	16
Appendix	
To mount surround sound speakers	i
Bose Corporation	inside back cover

Before you begin

Bose® Virtually Invisible® speaker technology allows you to enjoy lifelike home performances from the very latest surround-sound encoded movies, CDs, and television shows, without a room full of speakers.

Your stereo VCR or stereo television sends the encoded program material to the surround sound receiver, which interprets it by distributing various sounds to particular speakers. Although the sound mix varies with different types of programs, dialogue is usually sent to the center speaker, while sounds from the left or right side of the picture go to the left or right front speakers. Ambient sound and special effects are directed to one or both of the surround (rear) speakers. At any point in a surround-sound performance, you may hear sound from all of just a few of the speakers.

To select surround-encoded program material, look for any of the terms Surround, Dolby® Surround, the double-D symbol  on tapes and discs, and the word "surround" preceding a TV broadcast. Your Acoustimass® 700 home theater speakers are also compatible with Dolby Digital (also known as AC3) receivers and program material. The special settings for Dolby Pro-Logic and Dolby Digital receivers are described on pages 12 and 13.

With your Acoustimass 700 speakers, you can also enjoy a wide variety of stereo programming that is not surround-encoded. Simply adjust your receiver accordingly.

Unpack the carton

- Remove any staples from the opened carton flaps.
- Remove the inner cartons containing the three cube speaker arrays, the two surround speakers, and speaker cables and brackets.
- Gently roll the carton over onto its side and then onto its opening.
- Carefully lift the carton from around the Acoustimass module and packing cushions.
- If the speakers or the Acoustimass module appear damaged, do not use them. Repack everything in the original carton and contact your authorized Bose dealer immediately.

Note: Now is a good time to record the serial number and the date of manufacture (DOM) on page 2 of this guide and on your warranty card.

WARNING:

The Acoustimass module weighs 21.1 lb (9.57 kg). Use good lifting practice to avoid injury.

WARNING:

To avoid danger of suffocation, keep the plastic bags that wrap these speakers out of the reach of children.

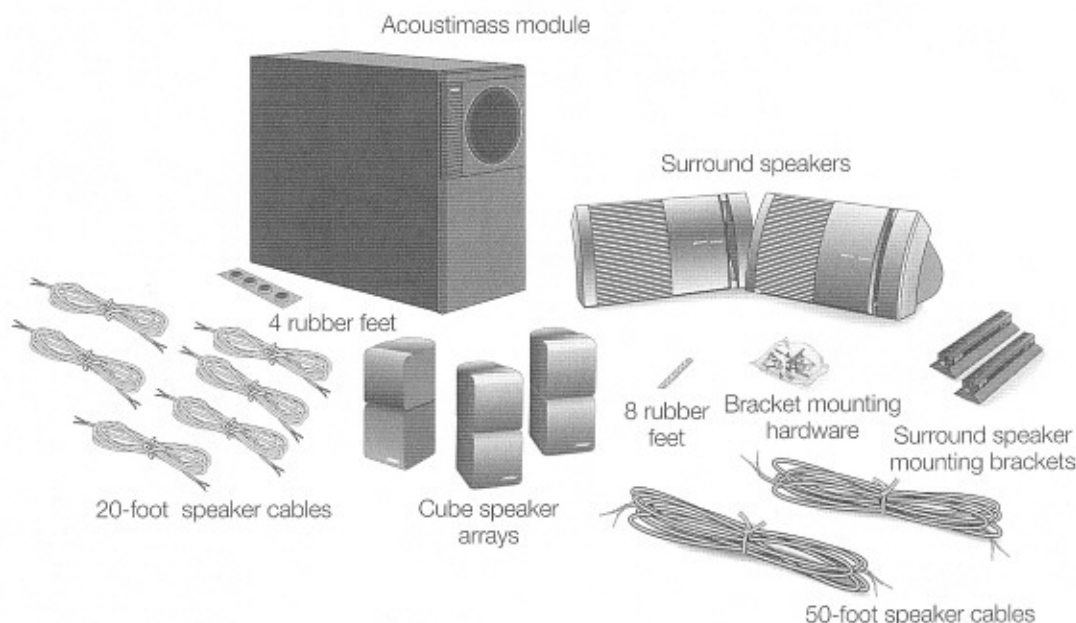


Figure 1

What comes in the carton

- Acoustimass module
- 2 surround speakers
- 3 cube speaker arrays
- 6 20-foot speaker cables
- 2 50-foot speaker cables
- 4 rubber feet (for the Acoustimass module)
- 8 rubber feet (for the surround speakers)
- 2 surround speaker mounting brackets
- 1 packet of bracket mounting hardware

* Dolby and the double-D symbol are trademarks of Dolby Laboratories Licensing Corporation.

Placing your Acoustimass® 700 speakers to achieve realistic home theater sound

Bose designed your Acoustimass 700 home theater speakers to provide high performance and flexibility. The identical cube speaker arrays are magnetically shielded, allowing you to place them near a TV screen without causing interference. The Acoustimass module, which is unshielded, should be at least 2 feet (.6 m) from your screen, but at the same end of the room as the cube speaker arrays. The surround speakers, which are also unshielded, should be placed toward the rear of your room and at least 2 feet (.6 m) from your screen.

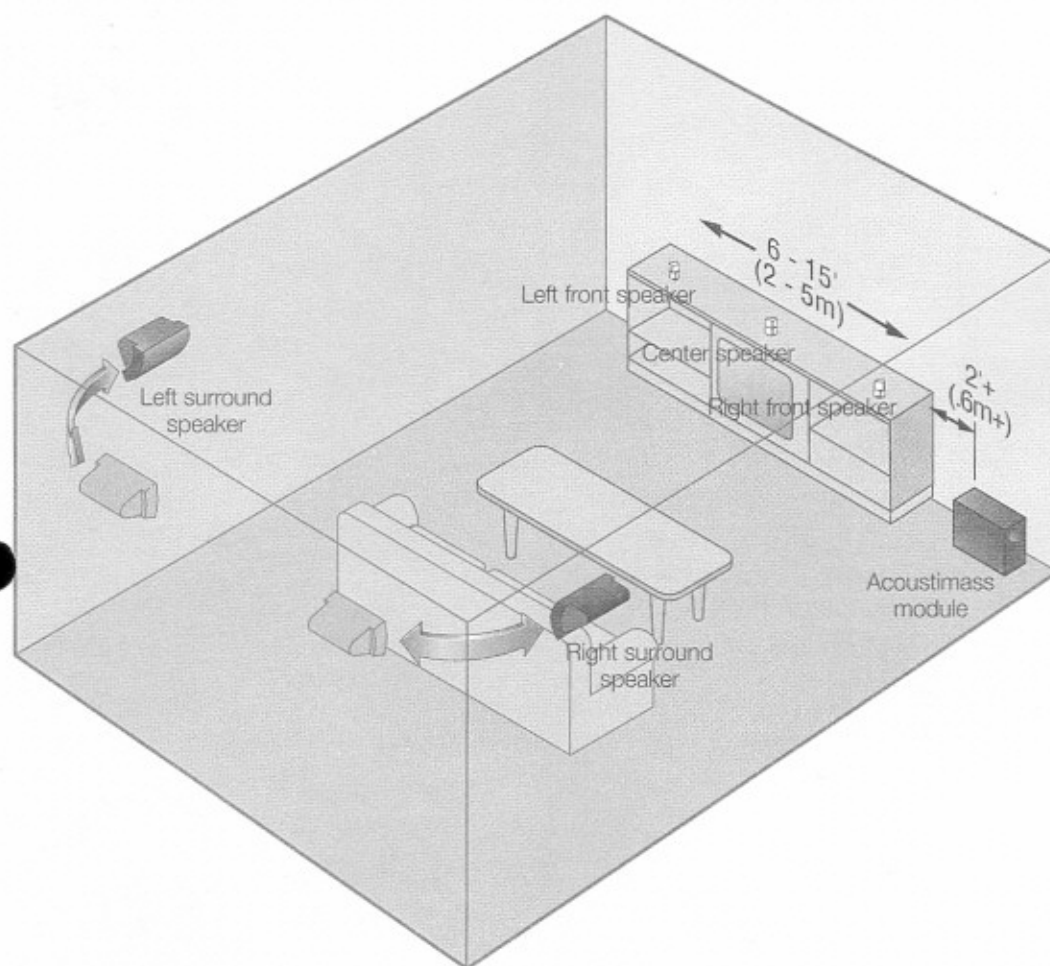


Figure 2

Recommended arrangement of Acoustimass 700 speakers

The home theater layout shown in Figure 2 applies the recommended guidelines. You may choose different locations for your speakers, to take advantage of the sound characteristics of different rooms. Just keep the guidelines in mind, and be aware that bass tones are multi-directional. That means you can actually hide the module behind curtains or under furniture. Without audible distortion to give away the location of the Acoustimass module, all the sound will seem to come from the small speakers around the room.

The center speaker localizes action and dialogue on your screen. Sound from the center speaker should seem to come from within the picture. The left and right front speakers create a sound image wider than the screen, so it seems natural to viewers sitting anywhere in the room. The surround speakers add subtle sounds and special effects that expand the visual image, bringing the viewer into the center of the action. The surround speakers should be positioned to allow the sound to reach the viewer from both sides, rather than from directly behind.

Selecting the locations for your speakers

The cables provided with your Acoustimass® 700 system allow for the following distances between components:

- Up to 20 feet (6 m) between the Acoustimass module and the receiver
- Up to 20 feet (6 m) between the Acoustimass module and the front and center cube speaker arrays
- Up to 50 feet (15 m) between the receiver and the surround speakers

Use the placement suggestions below to help choose convenient speaker locations that give you good sound. Bose® wall brackets and floor stands can extend your placement options. See "Accessories" on page 16.

Left and right front cube speaker arrays

Figure 3 shows suggested ways to achieve an accurate left and right sound image.

- Place the front speakers on either side of your TV, at least 6 feet (2 m) or as much as 15 feet (5 m) apart.
- Place them in line with the center of the screen for the best sound balance (position 1). You can also place them diagonally (position 2). Placing them in a line above the top of the TV is the third choice (position 3).
- The speaker on the left as you face the TV connects to the LEFT FRONT output jack on the Acoustimass module.

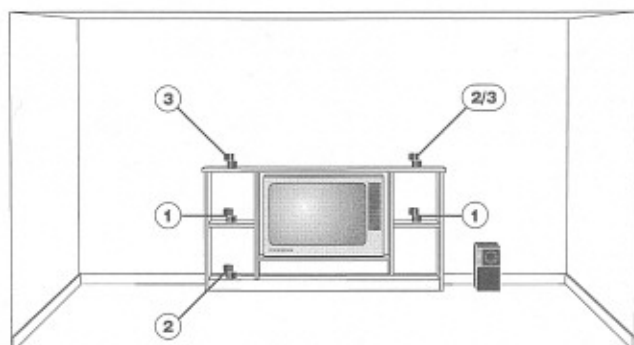


Figure 3

Suggested choices for left and right front speaker placement

Center cube speaker array

Figure 4 shows suggested positions for the center speaker. Its sound should seem to come from within the picture.

- Place the center cube speaker array above, below, or on top of your television. If it is below, be sure that it is not supporting the weight of the television in any way.
- Keep it as close to the vertical center of the screen as possible, for the most accurate dialogue reproduction (positions 1 or 2).

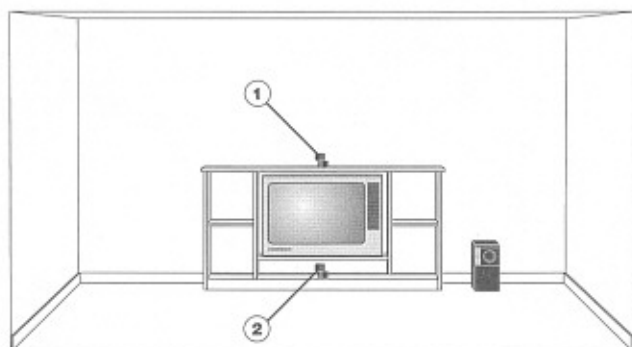


Figure 4

Suggested choices for center speaker placement

Surround speakers

Figure 5 shows recommended locations for the speakers that provide surround sound effects from the rear of your viewing area.

For accurate surround sound:

- Place the speakers as far apart as your room allows.
- Make sure they are behind the general viewing area, along the rear wall or to the rear of side walls.
- Place both speakers at the same height.
- Keep these speakers at least 2 feet (.6 m) from your TV.
- Where each speaker is placed determines whether it connects to the receiver outputs marked LEFT or RIGHT.

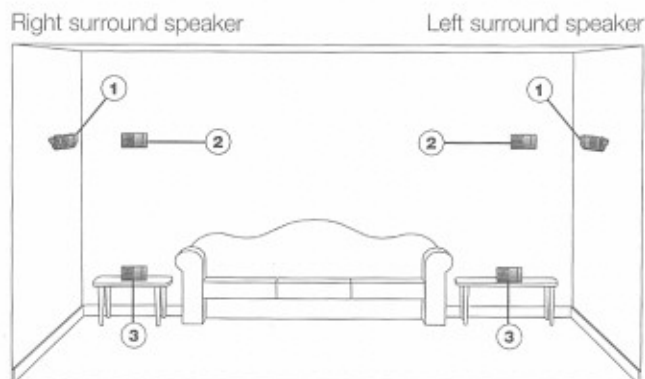


Figure 5

Suggested choices for surround speaker placement

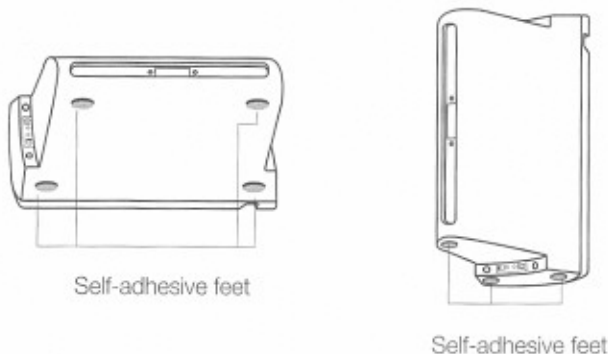
Securing the speakers

Supplied brackets allow you to mount the surround speakers on the wall or ceiling in a vertical or horizontal position. If you prefer, set the speakers on a table or shelf.

If you mount the speakers using the supplied brackets, be sure their position allows for room to tighten the bracket screw using a screw driver.

Note: Refer to the bracket instructions in the Appendix before mounting and connecting the speakers.

If you stand the speakers vertically or horizontally without using brackets, apply the rubber feet to the bottom surface of each speaker (Figure 6).



CAUTION:

The bracket screw must be inserted from the bottom on a vertically mounted bracket.

Figure 6

Self-adhesive feet attached to a speaker in horizontal or vertical position

Acoustimass® module

Bose® recommends putting your Acoustimass module at the same end of the room as the television monitor. To prevent interference, keep the module at least 2 feet (.6 m) from the television.

- You may hide the Acoustimass module behind or under furniture, but do not block the opening. Be sure there is at least 2 inches (5 cm) between the opening and any surface.
- If the opening faces the wall it increases the bass; if it faces away it decreases the bass. For the most bass response, position the opening 2 to 3 inches (5 to 8 cm) from a wall or corner.
- Stand the Acoustimass module vertically or horizontally (Figure 7).

After selecting a place for the Acoustimass module, attach the larger set of four rubber feet to the bottom surface for additional stability. The feet also protect the cable connections if the Acoustimass module is standing on the end that has the cable connections.

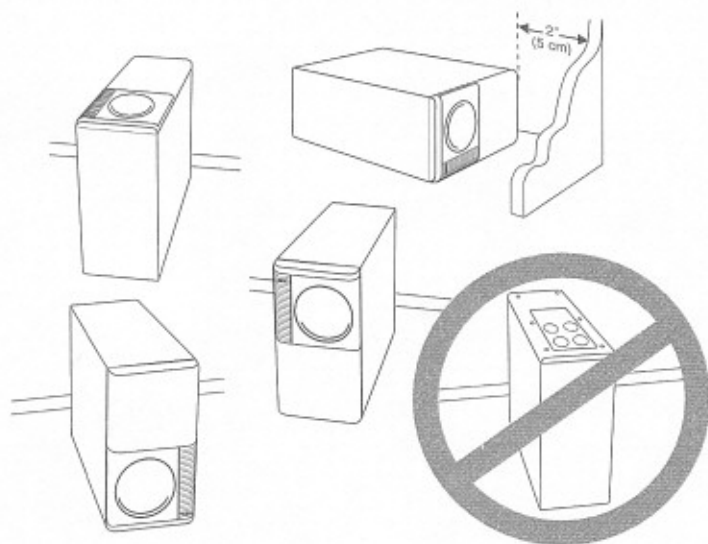


Figure 7

Acoustimass module positions

Connect the speakers

Use the supplied 20-foot speaker cables to connect the cube speakers to the Acoustimass module and the module to your receiver. Use the 50-foot cables to connect the surround speakers to your receiver.

Note: If you need longer speaker cables, splice in 18-gauge (0.75 mm²) or thicker cable. Make sure to attach the wires positive to positive and negative to negative.

Speaker cable consists of two insulated wires. The insulation around one wire is marked with a red band. This wire is always positive (+). The plain wire is always negative (-). These correspond to the positive (red) and negative (black) terminals on the back of each speaker or receiver. Be sure to connect each wire to the proper terminal, positive to positive and negative to negative.

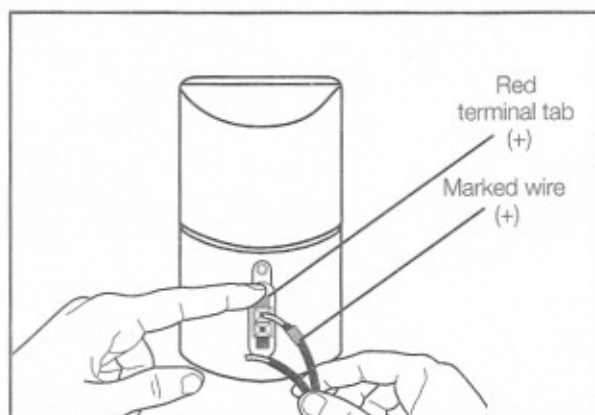
CAUTION:

Before making any connections, turn off your receiver and unplug it from the AC power (mains) outlet. Not doing so may result in damage to your system.

Cube speakers

For each connection to the cube speakers, push the terminal tab down and insert the appropriate wire into the exposed hole (Figure 8).

1. Connect one end of a 20-foot cable to the right cube speaker.
2. Connect the other end to the RIGHT OUTPUT TO CUBE SPEAKERS terminals on the Acoustimass® module (see Figure 10 on page 11).
3. Repeat to connect the left cube speaker to the LEFT OUTPUT TO CUBE SPEAKERS terminals.
4. Repeat to connect the center cube speaker to CENTER OUTPUT TO CUBE SPEAKERS terminals.



CAUTION:

Do not connect the cube speakers directly to the receiver.

Figure 8

Inserting wire into cube speaker terminals

Surround speakers

For connections to the surround speakers, slide one terminal lever aside to insert the appropriate wire. Release the lever to secure the wire.

1. Connect one end of a 50-foot cable to one speaker.
2. Connect the other end to the RIGHT SURROUND SPEAKER outputs on your receiver.
3. Repeat 1 and 2 to connect the cable from the other speaker to the LEFT SURROUND SPEAKER outputs.

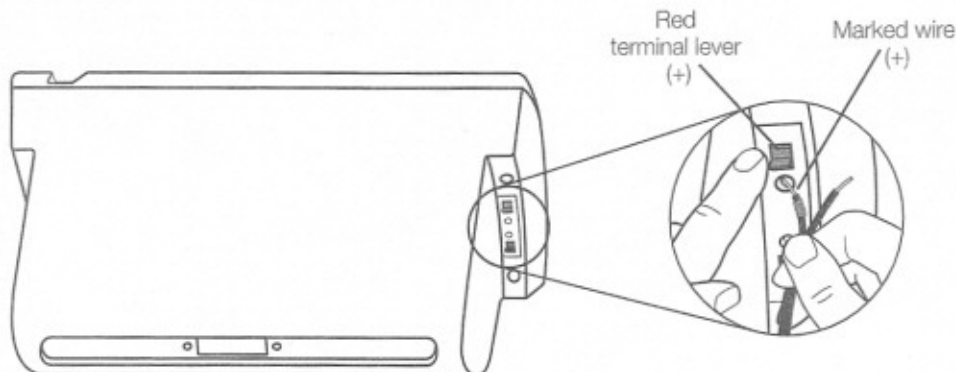


Figure 9

Inserting wire into surround speaker terminals

Acoustimass® module

Pay careful attention to connecting all cable wires positive to positive and negative to negative (in phase). Out of phase wiring can cause total loss of Acoustimass module output.

Your receiver may have more than one pair of front speaker outputs. They are usually labeled Speakers A and Speakers B. Use either set of outputs unless one is designated for a particular ohm rating. In that case, use the outputs intended for use with speakers rated 8 ohms (8Ω) or less.

1. Connect the end of a 20-foot speaker cable to the RIGHT INPUT FROM RECEIVER OR AMPLIFIER terminals on the Acoustimass module (see Figure 10 on page 11).
2. Connect the other end to the RIGHT FRONT SPEAKER outputs on your receiver.
3. Repeat 1 and 2 to connect the LEFT INPUT FROM RECEIVER OR AMPLIFIER terminals to the LEFT FRONT SPEAKER outputs on your receiver.
4. Repeat to connect the CENTER INPUT FROM RECEIVER OR AMPLIFIER terminals to the CENTER SPEAKER outputs on your receiver. If there are two sets of center channel outputs, use either set.

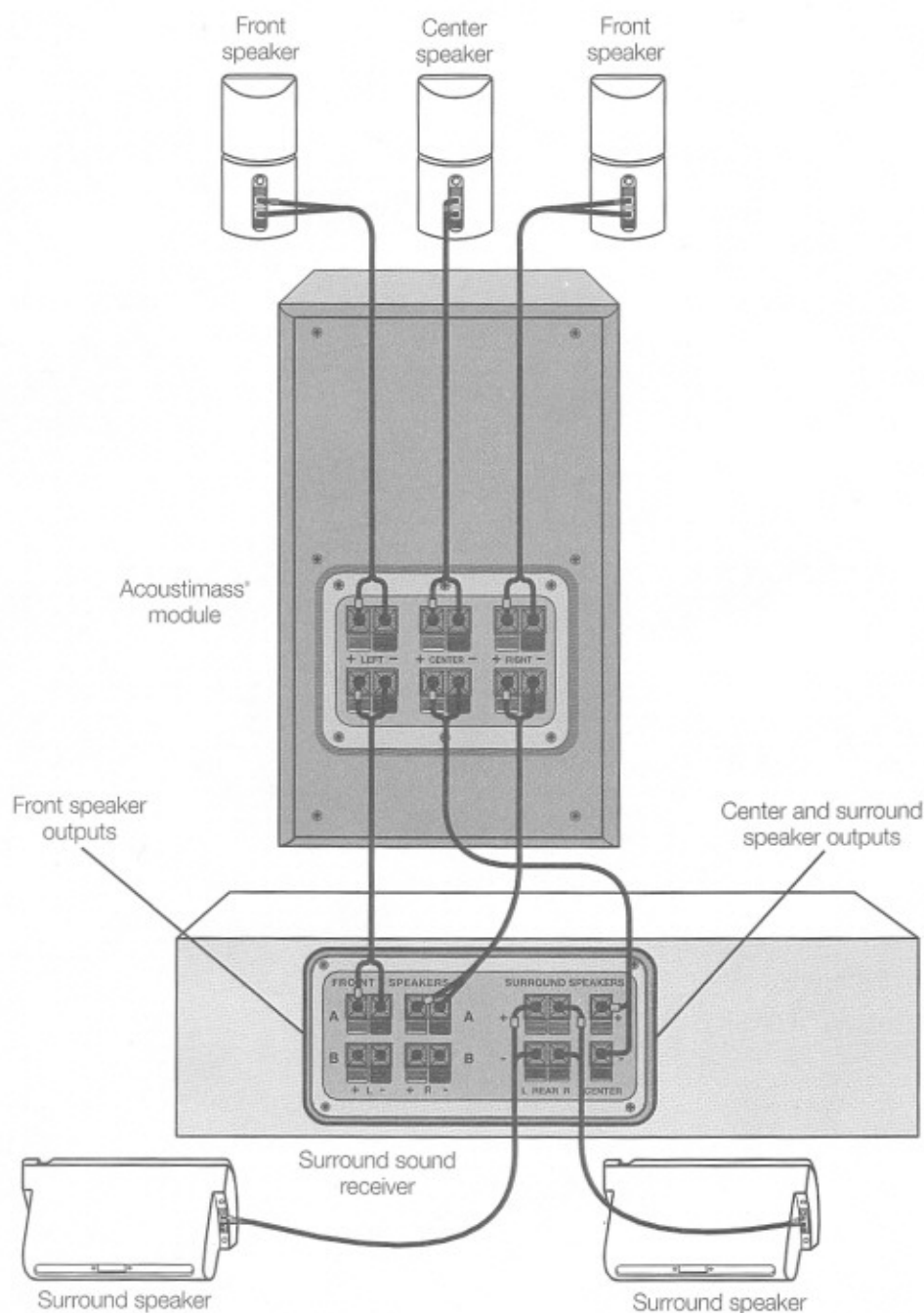
Note: If your receiver's center channel is not amplified, you must connect an amplifier to your receiver. Use RCA cable to connect the center channel RCA-type output on the receiver to the RCA-type input on the amplifier. Then connect the Acoustimass module directly to the amplifier, instead of to the receiver.

CAUTION:

Do not connect the Acoustimass module directly to your television unless it provides surround decoding circuitry and amplified outputs for all channels.

CAUTION:

Be sure to attach rubber feet to the bottom surface of the Acoustimass module. If the terminal side of your Acoustimass module faces down, the rubber feet will minimize pressure on the wires, floor scratches, and speaker movement.

**Figure 10**

Completed Acoustimass® 700
speaker connections

Check connections

Check all connections from the receiver to the Acoustimass module and the module to the cube speakers (Figure 10). Make sure all speakers are connected to the proper terminals according to their position in your room.

Check to make sure you connected the wires positive to positive and negative to negative (in phase). Out of phase wiring can result in a total loss of Acoustimass module output. Do not allow exposed wires to brush against each other, which could damage your components.

Be sure to correct any wiring problems before you plug your receiver in and turn it on.

For realistic home theater sound

Each speaker produces only the sound directed to it by the steering logic in your A/V component. For example, right front channel sound is reproduced by the speaker connected to the RIGHT FRONT SPEAKER outputs of an A/V receiver.

Notice that the surround speakers, which play only when specific sounds are directed to them, deliver subtle effects that add to the overall realism. They are seldom, if ever, as loud as the front speakers.

Setting your Dolby Pro-Logic receiver

You must set the volume levels for the front, center and surround speakers at your receiver. You can adjust these levels at the receiver or with the remote control. Your receiver may have a test tone to help you set volume levels. If it does, follow these steps:

- Press test tone ON at the remote.
- Set the volume for the speakers in the following order: Left, Center, Right, Surround.
- Balance the pink noise tone for evenness among all individual speakers.

For use in video applications, be sure the SURROUND SOUND *center mode* setting of your receiver is on NORMAL (Figure 11).

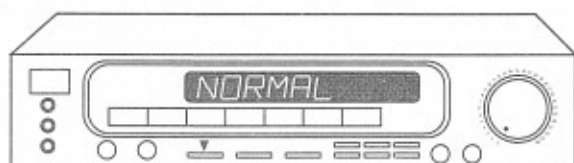


Figure 11

A receiver set for NORMAL center mode

Setting your Dolby Digital (AC-3) receiver

Your Acoustimass® 700 speakers are compatible with the output from Dolby Digital (AC-3) receivers. Take special care to set the channel output according to the specifications listed in the chart below. Proper size settings of these speakers is particularly important for accurate surround sound performance.

Speaker	Setting at receiver
Left and Right Front	LARGE
Center	SMALL
Left and Right Surround	SMALL
LFE (low frequency effects)	MAX
Subwoofer	OFF
Crossover Frequency	200 Hz

Bass and treble adjustments

Upholstered furniture, wall-to-wall carpets, or heavy drapes can muffle treble (high notes), making your speaker system sound too deep. Bare floors and walls and hard surface furniture can make your speaker system sound too shrill. After listening to your speakers, you may wish to adjust the balance of bass and treble. You can use the bass and treble controls on your receiver.

How to clean your speakers

Wipe the speakers using a damp cloth. Do not use solvents or chemicals. Do not allow liquids to spill on or objects to drop into the Acoustimass® module or the speaker grilles. You may vacuum the grilles carefully; the drivers are directly behind the grille cloth. No other regular maintenance is required.

Troubleshooting problems

If you have a problem with your Acoustimass 700 speakers, turn off your sound source and try the solutions below.

Problem	What to do
No sound from any speakers	<ul style="list-style-type: none">• Make sure the receiver is plugged in and turned on.• Check the volume control.• Check the MUTE button. It should not be selected.• Make sure headphones are not connected to the receiver.• Check the surround sound settings on your receiver. Refer to the owner's manual for that component.
No sound from one of the cube speaker arrays	<ul style="list-style-type: none">• Check connections of the cube speaker to the Acoustimass module, and the module to the receiver. Refer to "Cube speakers" on page 9 and "Acoustimass module" on page 10.• Make sure your receiver has an amplified center channel.
No sound from one or both surround speakers	<ul style="list-style-type: none">• Check connections of that speaker to the receiver. Refer to "Surround speakers" on page 9.• Be sure your receiver is set properly for surround sound.• Check the audio source material to be sure it is encoded for surround sound. Remember that surround speakers, which deliver subtle effects, may not have sound directed to them continually.
Little or no sound from the Acoustimass module	<ul style="list-style-type: none">• Check connections of the Acoustimass module to the receiver. Make sure it is connected in phase (positive to positive and negative to negative). Refer to "Acoustimass module" on page 10.• Make sure the openings on the module are not blocked.• If you are using Dolby Digital (AC-3) programming, verify that the settings are correct at the receiver. Be sure the source material (laserdisc, DVD, or broadcast programming) is Dolby Digital encoded.
Not enough or too much bass	<ul style="list-style-type: none">• Move the Acoustimass module closer to a wall or corner to increase bass. Move it farther from a wall or corner to decrease bass.• Set the "Loudness" or "Bass Boost" control on your receiver to increase or decrease bass.

Problem	What to do
Sudden loss of sound from the front speakers	<ul style="list-style-type: none">• Reduce the output level from your TV or other components connected to the receiver. This will prevent the automatic protection circuitry from limiting input to the speakers.
Sound from the cube speakers does not match the image on the screen	<ul style="list-style-type: none">• Make sure the cube speaker on your right as you face the screen is connected to the RIGHT OUTPUTS TO CUBE SPEAKERS on the bass module. Check the other cube speaker connections.
Sound is distorted	<ul style="list-style-type: none">• Check the speaker cable for damage.• Reduce the output level from your TV or other components connected to the receiver.
Hum or noise	<ul style="list-style-type: none">• Turn off any other electronic equipment in the room to see if noise stops.• Check the receiver owner's manual for the recommended distance between it and other electronics.

Customer Service

For additional help in solving problems, contact Bose®. See the inside back cover for Bose offices and phone numbers.

Warranty period

Bose® Acoustimass® 700 speakers are covered by a limited 5-year transferable warranty. Details of the coverage are provided on the warranty card that came with your speakers. Please fill out the information section on your card (refer to the serial number information you recorded on page 2 of this guide). Then address the card, detach, and mail to Bose.

Technical information

Features

- Virtually Invisible® speaker design
- Direct/Reflecting® speaker technology
- Acoustimass speaker technology
- One set of mounting brackets included
- Automatic system protection circuitry
- Syncom® computer quality control

Speaker driver complement

- Two 5.25" (13.3 cm) dual voice coil low-frequency drivers in Acoustimass module
- Two 2.5" (6.4 cm) magnetically shielded wide-range drivers in each cube speaker array
- Two StarDriver™ 4.5" (11.4 cm) unshielded full-range drivers in two surround speakers

Compatibility/Impedance

- Compatible with A/V receivers rated from 10-200 watts per channel; rated 4 to 8 ohms impedance for front speakers
- Compatible with A/V receivers rated from 10-80 watts per channel; rated 4 to 8 ohms impedance for surround speakers

Finish

- Acoustimass module: Scratch-resistant vinyl veneer
- Cube speaker arrays: Polymer finish
- Surround speakers: Polymer finish

Size/Weight

- Acoustimass module: 14"H x 19"W x 7½"D (35.5 cm x 48 cm x 19.1 cm)
- Cube speaker array: 6¾"H x 3⅞"W x 4¾"D (16.1 cm x 7.9 cm x 12.1 cm)
- Surround speaker: 5¾"H x 11"W x 6½"D (14.6 cm x 28.0 cm x 16.5 cm)
- Weight, unpacked: cube speaker array 2 lb (.9 kg)
module 21.1 lb (9.57 kg)
surround speaker 3.2 lb (1.47 kg)
- Weight of system, packed for shipping: 56 lb (25.5 kg)

Accessories

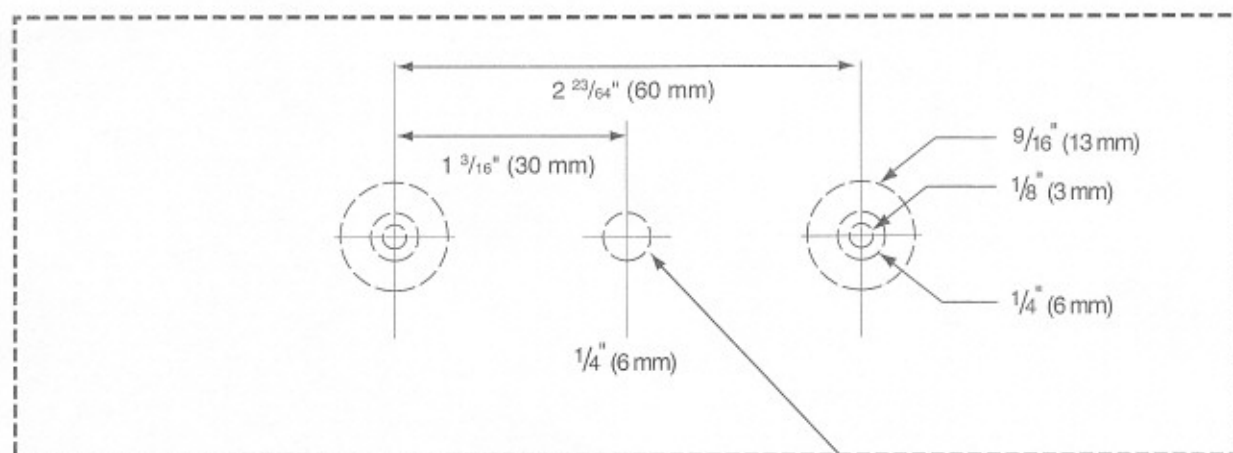
Floor stands: UFS-20B (black), UFS-20W (white)

Wall brackets: UB-20B (black), UB-20W (white)

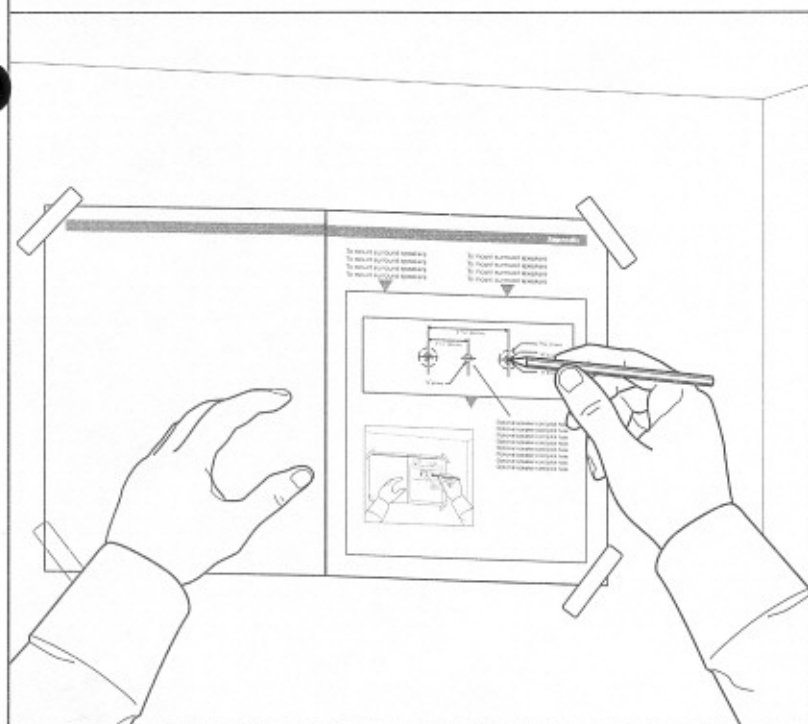
To mount surround sound speakers

1

Drilling template



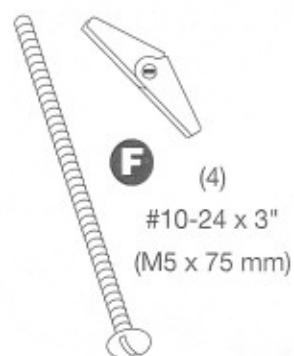
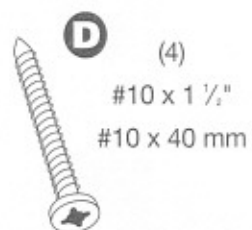
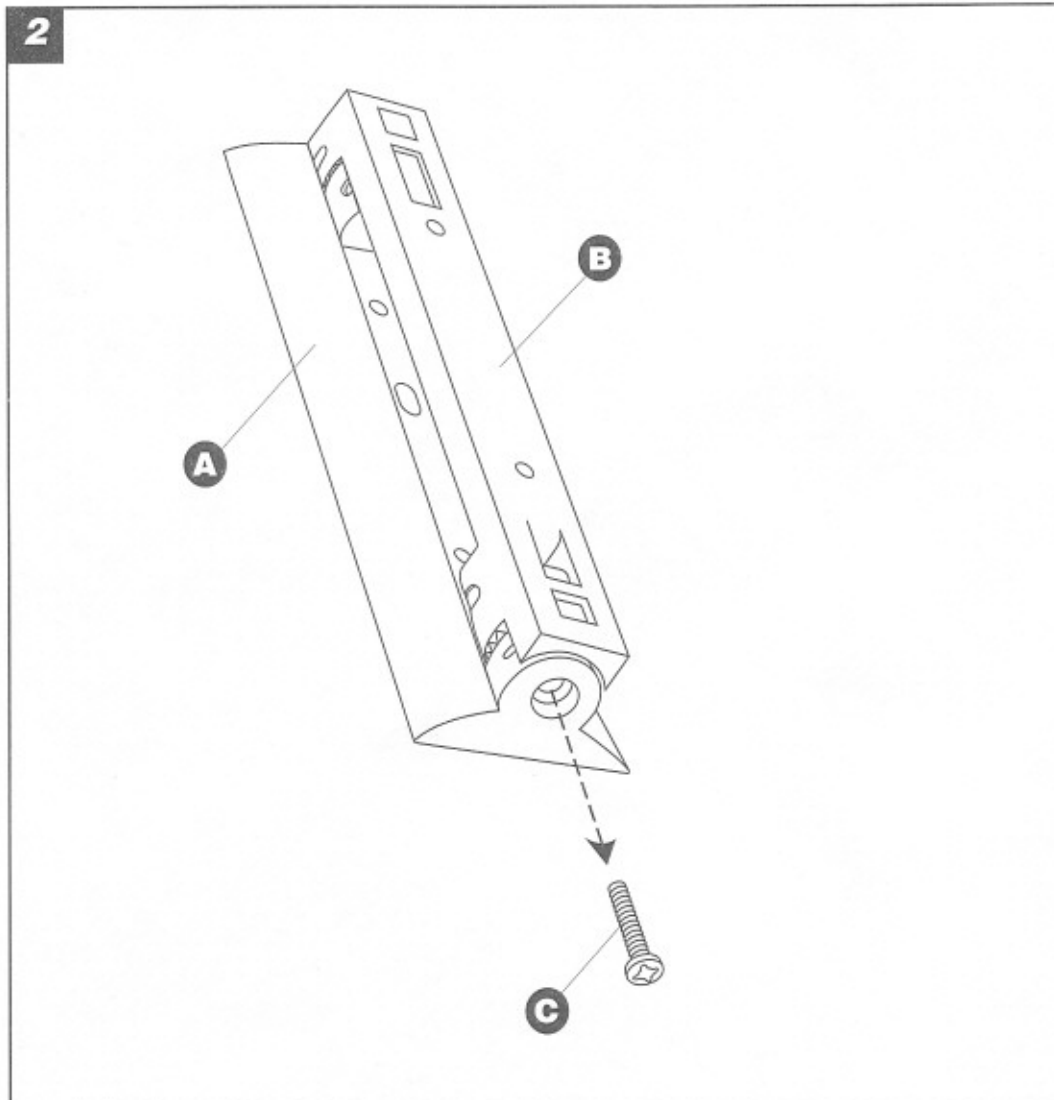
Optional speaker cord pilot hole



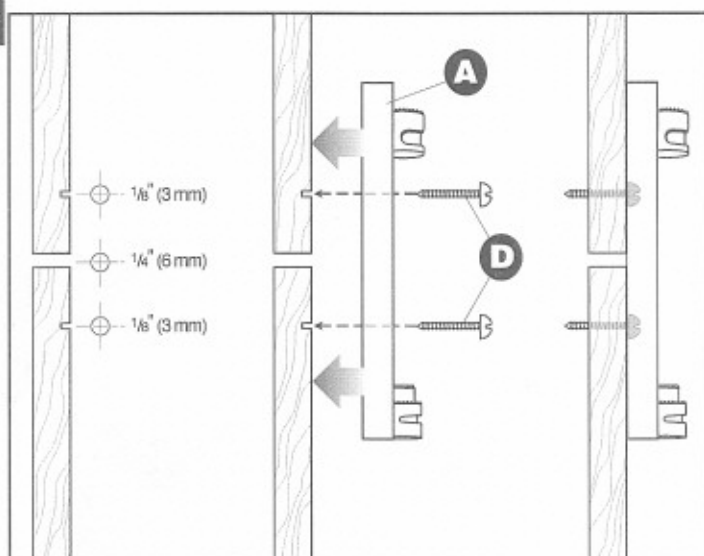
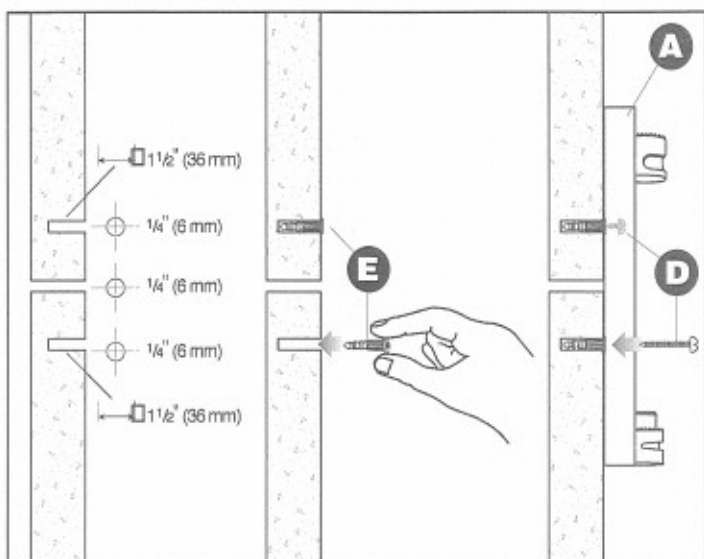
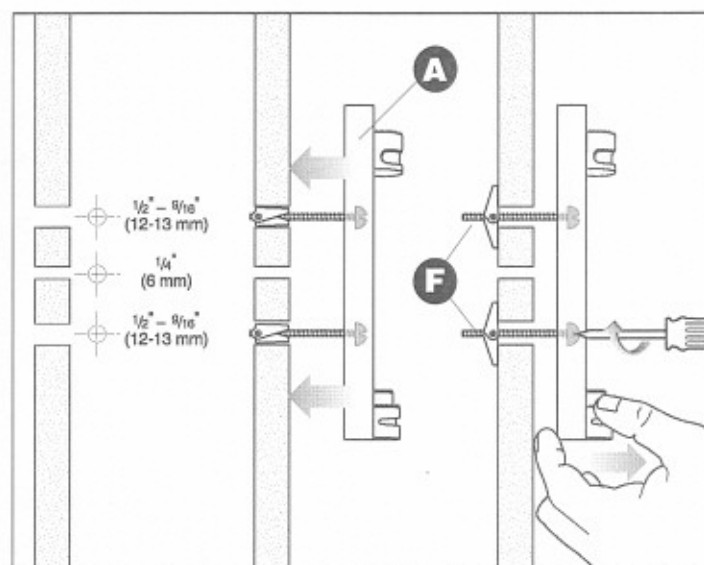
CAUTION: Do not mount on surfaces that are not sturdy enough, or that have hazards concealed behind them, such as electrical wire or plumbing. If you are unsure about installing the bracket, contact a qualified professional installer.

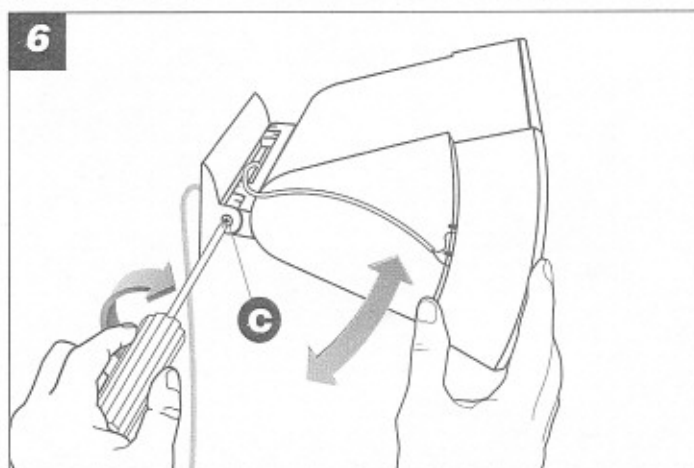
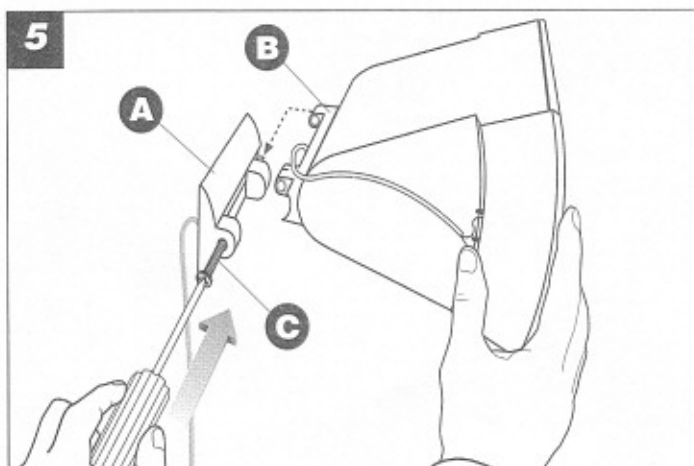
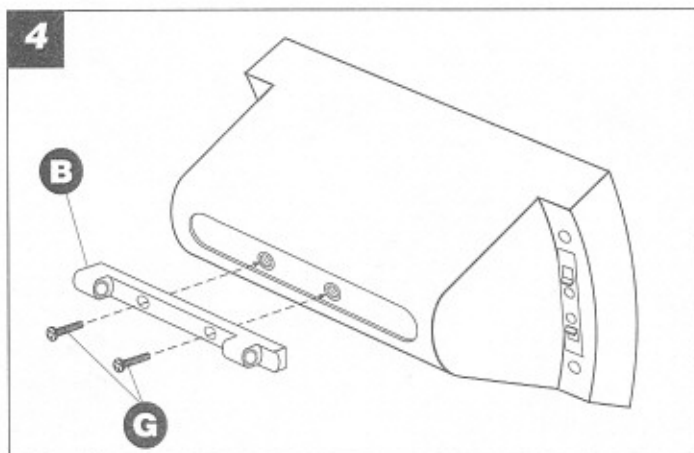
Note: See owner's guide section on proper placement and wiring instructions.

Mount horizontally or vertically,
with the speaker cord in the wall or along the wall.



3

**Wood
wall****Masonry
wall****Wallboard
wall**



Note: For a bracket in vertical position, you must mount "A" with the hole for "C" at the bottom. Be sure to tighten all screws.

Loosen screw slightly, adjust angle, re-tighten the screw.

USA

Bose Corporation, The Mountain
Framingham, MA 01701-9168
1-800-367-4008
Phone hours - ET (eastern time):
Weekdays 9 a.m. to 8 p.m.
Saturdays 9 a.m. to 3 p.m.

Canada

Bose Ltd., 8-35 East Beaver Creek Road
Richmond Hill, Ontario L4B 1B3
1-800-444-BOSE (1-800-444-2673)
Phone hours - ET (eastern time):
Weekdays 9 a.m. to 5 p.m.

European Office

Bose B.V., Nijverheidstraat 8
1135 GE Edam, Nederland
TEL 299-390190 FAX 0299-390109

Australia

Bose Australia, Inc., 1 Sorrell Street
Parramatta, N.S.W. 2150
TEL 02 204-6111 FAX 02 204-6122

Belgique/België

Bose N.V., Limesweg 2, B-3700 Tongeren
TEL 012-390800 FAX 012-390840

Danmark

Bose A/S, Industrivej 7, 2605 Brøndby
TEL 4343 7777 FAX 4343 7818

Deutschland

Bose GmbH, Max-Planck-Straße 36d
D-61381 Friedrichsdorf
TEL 06172-71040 FAX 06172-710419

France

Bose S.A., 6, rue Saint Vincent
78100 Saint Germain en Laye
TEL 01-30616363 FAX 01-30614105

India

Bose Corporation India Private Limited
W-16, Greater Kailash-II
New Delhi 110 048
TEL (011) 648 4462 FAX (011) 648 4463

Ireland

Bose Corporation
Carrickmacross, Co Monaghan
TEL 042-61988 FAX 042-61998

Italia

Bose S.p.A., Via Luigi Capucci, 12
00147 Roma
TEL 06-5127641 FAX 06-5115438

Japan

Bose K.K., Shibuya YT Building
28-3 Maruyama-cho
Shibuya-ku, Tokyo 150
TEL 3-5489-1054 FAX 3-5489-0591

Nederland

Bose B.V., Nijverheidstraat 8
1135 GE Edam
TEL 0299-390111 FAX 0299-390109

Norge

Bose A/S, Solheimsgate 11
N-2001, Lillestrøm
TEL 63-817380 FAX 63-810819

Österreich

Bose Ges.m.b.H., Vienna Business Park
Wienerbergstrasse 7 (10.OG)
A-1100 Vienna
TEL 01-60404340 FAX 01-604043423

Schweiz

Bose AG, Rüfenbergerstrasse 13
4460-Gelterkinden
TEL 061-9815544 FAX 061-9815502

Sverige

Bose A/S, Blandsädsgratan 2D
S-43146 Mölndal
TEL 31-878850 FAX 31-274891

United Kingdom

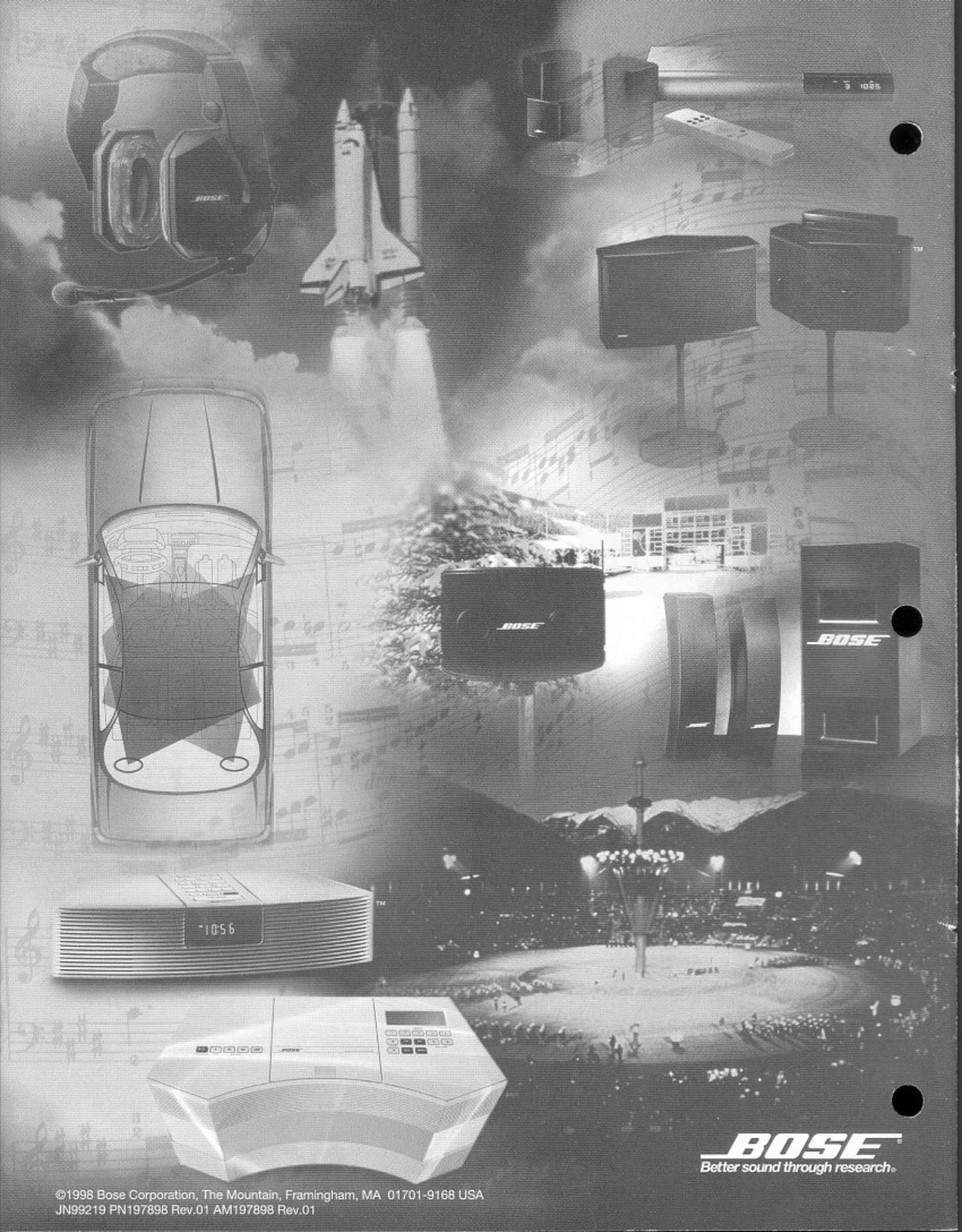
Bose Limited, Unit G2
Trinity Trading Estate
Sittingbourne, Kent ME10 2PD
TEL 01795-475341 FAX 01795-427227

From other locations

Bose Product Support, 1 New York Ave.
Framingham, MA 01701-9168 USA
TEL (508) 766-1900 FAX (508) 766-1919

World Wide Web

www.bose.com



BOSE
Better sound through research.