

BOSEbuild™ Speaker Cube

Connecting an AUX device

You can use your speaker with any device that features headphone or audio output, such as a portable digital music player. This feature requires using a stereo audio cable with a 3.5 mm plug on each end to connect the audio output of your device to the AUX input of the speaker. This type of cable is available at electronics stores.

To connect an AUX device:

1. Connect the speaker to AC power.
2. Connect the audio cable to the AUX connector on the speaker and to the headphone or audio output connector on the device.
3. Use the connected device's audio controls to adjust the volume level.

Note: When an audio cable is connected to the speaker's AUX connector, the speaker automatically switches to the AUX source. To switch back to the *Bluetooth* source, unplug the audio cable.

Tips on placing the speaker

The sound quality of your speaker can vary depending on where the speaker is placed in a room. Keep the following guidelines in mind when placing your speaker.

- The speaker's *Bluetooth*® range is 33 feet (10 m). If you move the device too far away from the speaker, sound quality will be affected and the device may disconnect from the speaker.
- For optimal performance, the speaker cube should be tightly sealed with no visible gaps or openings, and the front of the speaker should face the listener.
- For best bass response, the back of the speaker should be placed near a wall, but not directly against a wall. Bass response decreases as the speaker is moved away from a wall.
- Do not place the speaker in small areas that are enclosed on all sides except the front, as this will adversely affect sound quality.

Factory reset

To restore your speaker cube to factory default settings:

1. Unplug the speaker.
2. With the speaker unplugged and unpowered, press and hold the Power/Mode button.
3. While holding the Power/Mode button, connect the speaker to AC power.
4. Continue holding the Power/Mode button for ten seconds, until the lights flash green.

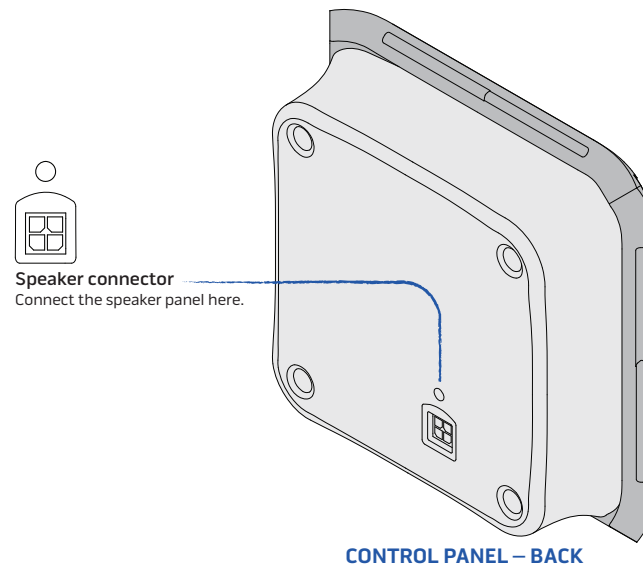
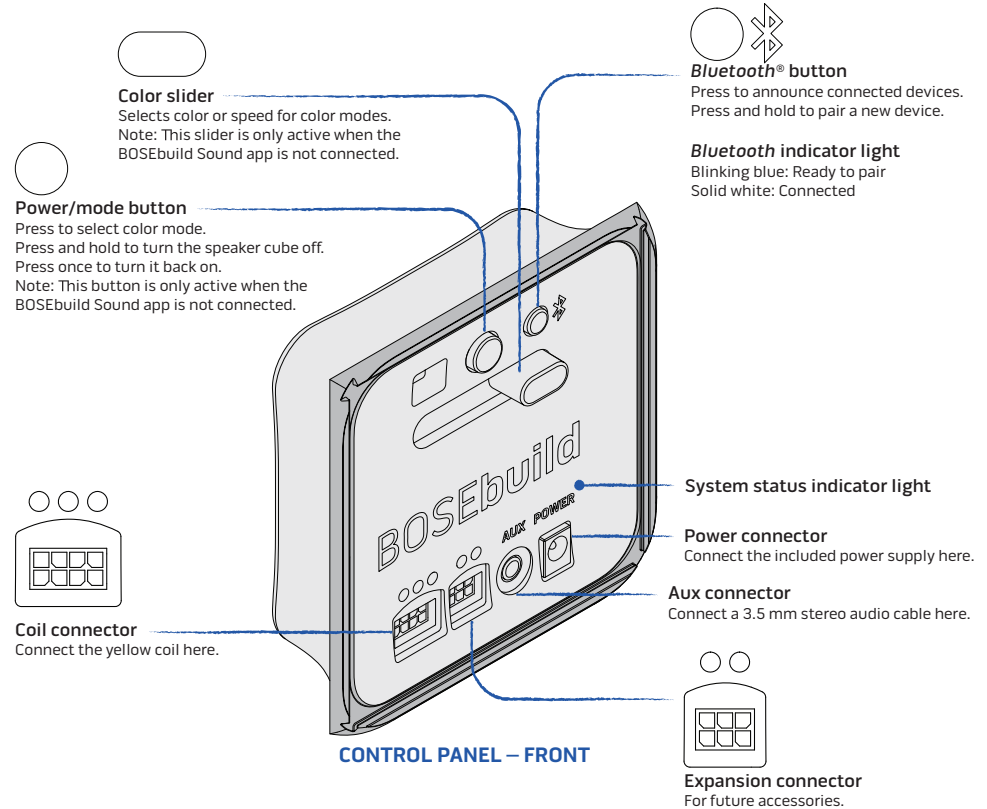
The system resets, the *Bluetooth* indicator light blinks blue, and you hear "Ready to pair."

The *Bluetooth*™ word mark and logos are registered trademarks owned by Bluetooth SIG, Inc. and any use of such marks by Bose Corporation is under license. ©2016 Bose Corporation. No part of this work may be reproduced, modified, distributed, or otherwise used without prior written permission.

BOSE
Better sound through research®

Bose Corporation, The Mountain,
Framingham, MA 01701-9168 USA
rev03

Controls and connections



Using your speaker cube without the BOSEbuild Sound app

The BOSEbuild Sound app includes step-by-step instructions for pairing and assembling your speaker cube, as well as activities and tools that help you get the most out of your BOSEbuild speaker cube. In addition, some features are available without using the app. The following instructions describe using your speaker cube without the app.

Connecting to AC power

To use your BOSEbuild Speaker Cube, you must connect it to AC power.

1. Plug the small, round end of the power supply cord into the POWER connector on the Control Panel.
2. Connect the power supply to an AC power outlet.

Pairing a mobile device

When you first power on the speaker, it is ready to pair with your mobile device. The *Bluetooth*® indicator blinks blue, and the voice prompt says, "Ready to pair your BOSEbuild Speaker Cube."

1. On your mobile device, make sure *Bluetooth* is on. (The *Bluetooth* menu is usually found in the Settings menu.)
2. Select your BOSEbuild Speaker Cube from your mobile device's *Bluetooth* list.

The *Bluetooth* indicator glows solid white, and the voice prompt says, "Connected to <device name>."

Playing music

Once your mobile device is connected, start a music app on the device to play music. You can use the playback and volume controls on your device to control the music.

Changing the speaker's color

You can use the Power/Mode button and Color Slider to change the color of your speaker.

Note: This feature is only available when the BOSEbuild Sound app is not connected to the speaker.

Press the Power/Mode button to switch between color modes. Use the slider to adjust the appearance of each mode. Color modes appear in the following order:

1. Color Picker: The speaker glows a solid color. Use the slider to adjust the color.
2. Rainbow: The speaker scrolls through a rainbow of different colors. Use the slider to adjust the speed.
3. Dancing Colors: The speaker lights up in response to music. Use the slider to adjust the colors.
4. Color Off: The speaker's RGB LEDs are off. Other features continue to operate as normal.

Turning voice prompts off/on

The BOSEbuild Speaker Cube features voice prompts to guide you through the pairing and connecting processes. Voice prompts also announce the name of the currently connected device(s).

If you prefer not to hear voice prompts:

1. Press and hold the Power/Mode button for three seconds to turn the speaker off. The system status indicator light glows amber.
2. Press and hold the Power/Mode button again for ten seconds. You will hear confirmation that voice prompts are off. Repeat steps 1 and 2 and to turn voice prompts back on.

Note: This feature is only available when the BOSEbuild Sound app is not connected to the speaker.

Using your speaker cube with multiple devices

Your BOSEbuild™ speaker cube can remember up to eight paired devices and can be actively connected to two devices at a time. If you pair a ninth device, the least recently used device will be deleted from the speaker's memory.

Pairing another device

1. With the speaker cube powered on, press and hold the *Bluetooth*® button (⌘) until the *Bluetooth* indicator light blinks blue and the voice prompt says, "Ready to pair another device."
2. On your mobile device, make sure *Bluetooth* is on. (The *Bluetooth* menu is usually found in the Settings menu.)
3. Select your BOSEbuild Speaker Cube from your mobile device's *Bluetooth* list.

The *Bluetooth* indicator glows solid white, and the voice prompt says, "Connected to <device name>."

Managing multiple connections

When powered on, the speaker will automatically try to connect to the two most recently connected devices.

When two devices are actively connected, you can play music from either device. To switch between connected devices, pause the first device and play music from the second.

Scrolling through other paired devices

To play music from a paired device that is not currently connected:

1. Press the *Bluetooth* button (⌘) to hear which device(s) are currently connected.
2. Press the *Bluetooth* button again within three seconds to connect to the next paired device.
3. Repeat step 2 until you hear the correct device name.

Note: To use this feature, voice prompts must be on.

Clearing the speaker memory

To clear the speaker's memory of all paired devices:

1. Press and hold the *Bluetooth* button (⌘) for ten seconds, until you hear "Bluetooth device list cleared."
2. Delete the BOSEbuild Speaker Cube from your mobile device's *Bluetooth* list.

All *Bluetooth* devices are cleared, and the speaker is ready to pair.