

BOSE® Computer MusicMonitor™

Owner's Guide

Guía del usuario

Notice d'utilisation



SAFETY

Please read this owner's guide

Please take the time to follow the instructions in this owner's guide carefully. It will help you set up and operate your system properly and enjoy all of its advanced features. Please save this owner's guide for future reference.

- ▲ **WARNING:** To reduce the risk of fire or electrical shock, do not expose the product to rain or moisture.
- ▲ **WARNING:** The apparatus shall not be exposed to dripping or splashing, and objects filled with liquids, such as vases, shall not be placed on the apparatus. As with any electronic products, use care not to spill liquids into any part of the system. Liquids can cause a failure and/or a fire hazard and will void the warranty.
- ▲ **WARNING:** Do not place any naked flame sources, such as lighted candles, on or near the apparatus.
- ▲ **CAUTION:** Make no modifications to the system or accessories. Unauthorized alterations may compromise safety, regulatory compliance, and system performance, and will void the warranty.
- ▲ **CAUTION:** During normal use, the power supply may get hot. Avoid placing it on heat-sensitive surfaces.

Notes:

- The product label is located on the bottom of the product.
- Where the mains plug or appliance coupler is used as the disconnect device, such disconnect device shall remain readily operable.
- The product must be used indoors. It is neither designed nor tested for use outdoors, in recreation vehicles, or on boats.
- This product is intended to be used only with the power supply provided.



Please dispose of a used or damaged battery promptly and properly, following all local regulations. Do not incinerate.



This product conforms to all EU Directive requirements as applicable by law. The complete Declaration of Conformity can be found at www.Bose.com/static/compliance.

Additional safety information

See the additional instructions on the Important Safety Instructions sheet (North America only) enclosed in the shipping carton.

Information about products that generate electrical noise

If applicable, this equipment has been tested and found to comply with the limits for a Class B digital device, pursuant to Part 15 of the FCC rules. These limits are designed to provide reasonable protection against harmful interference in a residential installation. This equipment generates, uses, and can radiate radio frequency energy and, if not installed and used in accordance with the instructions, may cause harmful interference to radio communications. However, this is no guarantee that interference will not occur in a particular installation. If this equipment does cause harmful interference to radio or television reception, which can be determined by turning the equipment off and on, you are encouraged to try to correct the interference by one or more of the following measures:

- Reorient or relocate the receiving antenna.
- Increase the separation between the equipment and receiver. Connect the equipment to an outlet on a different circuit than the one to which the receiver is connected.
- Consult the dealer or an experienced radio/TV technician for help.

Note: *Unauthorized modification of the system could void the user's authority to operate this equipment and will void the warranty.*

This product complies with the Canadian ICES-003 Class B specifications.

For future reference

For convenience, enter the serial number (S/N located on the bottom of the right speaker) below and on the Customer Warranty card.

Serial number: _____

Purchased on: _____ From dealer: _____

We suggest that you keep your purchase receipt and the limited warranty agreement with this guide.

INTRODUCTION

Thank you

Congratulations on your purchase of the Bose® Computer MusicMonitor™.

With these high-quality speakers, you can enjoy:

- The precision of full-range sound reproduction.
- The impact of wide sound stage performance.
- The convenience of compact speakers that outperform many larger speakers.
- The freedom of movement you gain with the supplied remote control.
- The angled style that fits on your desktop and directs the sound where you sit.
- The confidence provided by solid construction and elegant design.
- The experience of proprietary Bose® technologies that bring you all of this.

INTRODUCTION	IV	MAINTAINING	8
SETTING UP	2	Caring for your speakers	8
Checking the contents.....	2	To clean the speakers	8
Positioning the speakers	3	To replace the remote control battery	8
Making connections	4	TROUBLESHOOTING	9
USING	6	PRODUCT DETAILS	10
Getting started.....	6	Customer Service	10
Controlling the volume	6	Limited Warranty.....	10
		Technical information.....	10

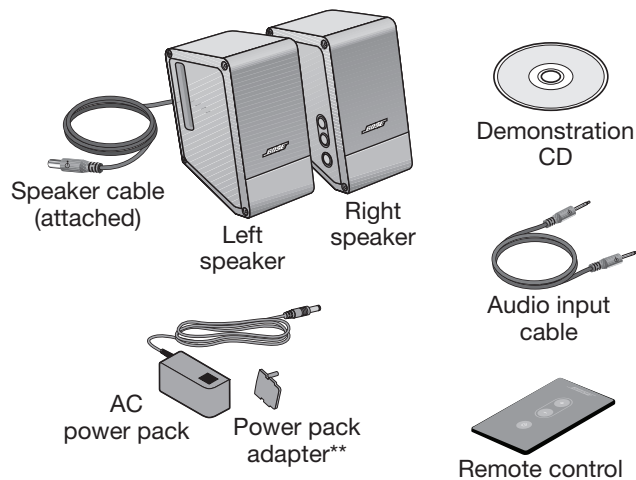
SETTING UP

Checking the contents

As you unpack the system:

- Make sure that all parts, shown here, are included in the carton.*

Save the carton and all packing materials for possible future use.

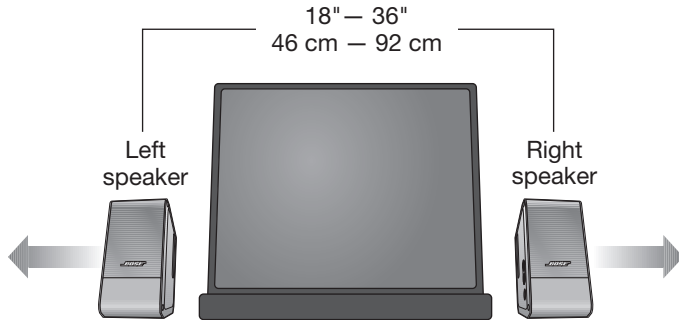


**If any part is missing or damaged, do not use the speakers. Instead, contact your Bose® dealer right away. Or, to contact Bose directly, refer to the contact list included in the carton.*

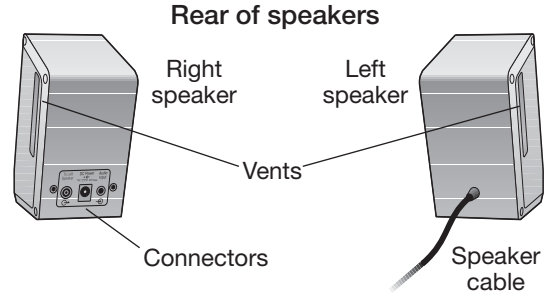
***Correct for your area.*

Positioning the speakers

The size and shape of these speakers make it easy to position them directly next to your computer. For proper performance, place the right speaker to the right and the left speaker to the left of your computer. Make sure there is equal distance on either side. This provides an accurate sound stage.



Be sure not to place any object in front of the speakers, which could block the sound or any signals from the remote control.



⚠ CAUTION: Avoid inserting any objects (such as a cable, finger, pencil, or screwdriver) into the vent on the side of each speaker. Such items can damage the speaker and degrade performance, and may void the warranty.

SETTING UP

Making connections

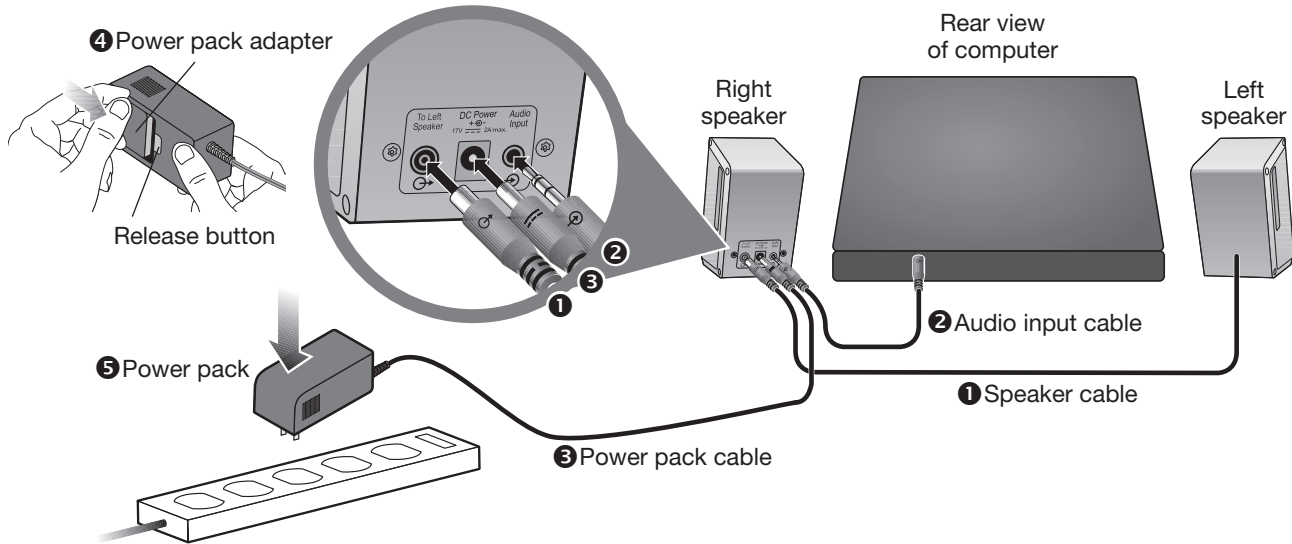
Use the provided cables and the power pack to make the connections shown on page 5.

⚠ CAUTION: Do not plug in the AC power cord until all other connections are completed.

- 1 Speaker cable (↔): Insert the free end into the **To Left Speaker** connector on the right speaker.
- 2 Audio input cable (-⊖): Insert one end into the **Audio Input** connector on the right speaker. Insert the other end into the Headphone or Speaker connector (the labels and positions of these connectors vary) on your computer.

Note: To use these speakers with a different sound source (such as an MP3 or portable CD player), make this connection to the Audio Out connector on that source instead.

- 3 Power pack cable (==): Insert the free end into the **DC Power** connector on the back of the right speaker.
- 4 Attach the adapter before plugging in the power pack.
- 5 Plug the power pack into an AC (mains) outlet.



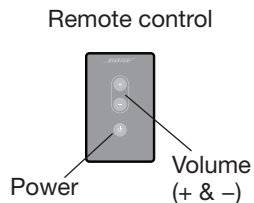
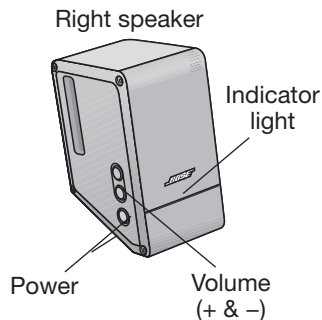
Note: Bose recommends using a safety agency-approved surge protector with all electronics equipment.

USING

Getting started

Insert the provided demonstration disc into your computer disc drive and set it to play. This is one way to enjoy the full impact of the sound.

To turn on the speakers, press the power button on the side of the right speaker. Or press the power button on the remote control while aiming it at the right speaker. The indicator light on the front of the right speaker turns on.



Controlling the volume

Press the + and – buttons on the side of the right speaker or on the remote control.

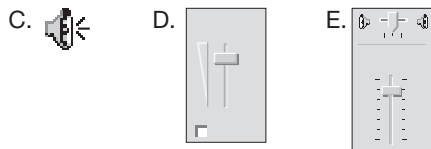
- The indicator light blinks each time you press + or –.
- The indicator light blinks more than once when the volume reaches its highest or lowest setting.

Be sure your computer is turned on and EACH of its volume controls is turned up to at least $\frac{2}{3}$ maximum and is not muted.

IMPORTANT: Low volume settings (less than $\frac{2}{3}$ maximum) on your computer reduce its output and unnaturally limit speaker volume.

Computer volume controls often include:

- External buttons, which may operate independent of the onscreen controls (examples A and B, below).
- Onscreen controls, provided on the computer (examples C, D, and E).
- Various media player controls (example F).



Tips on muting:

- If you use a control on your computer to mute the speakers, be sure to unmute them before turning off the power.
- Or you can use the power button on the right speaker or the remote control to turn off both speakers. Press this button again to resume play at your previous volume.

Tips on using the remote control:

Some conditions, such as room lighting, furniture that blocks the signal path, or direct sunlight, can affect remote operation.

If the remote does not work as it should:

- Point the remote more directly at the right speaker, which receives the remote control signals.
- Dim the room lights or move the speakers away from direct sunlight.
- Move closer to the system when you use the remote.
- If the problem persists, replace the remote control battery.

MAINTAINING

Caring for your speakers

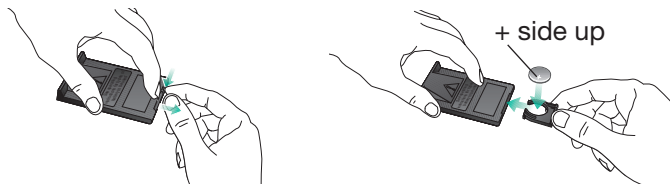
The only maintenance necessary is replacing the remote control battery when necessary. You may also want to clean the speakers, as needed.

To clean the speakers

Wipe each speaker carefully, using a soft, dry cloth only.

- Do not allow liquids to spill on the speakers or to enter the vent on the side of each speaker.
- Do not use abrasives, liquids, or sprays on the speakers or speaker grilles.

To replace the remote control battery



Replace the remote control battery when the remote stops operating (normally every year or two) or its range seems reduced.

Use only a Duracell, Eveready, Energizer, Maxell, or Toshiba CR2032 or DL2032 3-volt lithium battery.

▲ WARNINGS:

- Keep the remote control battery away from children. It may cause a fire or chemical burn if mishandled. Do not recharge, disassemble, heat above 140°F (60°C), or incinerate.
- Dispose of used batteries promptly. Replace only with a battery of the correct type and model number.
- Danger of explosion if battery is incorrectly replaced. Replace only with Duracell, Eveready, Energizer, Maxell, or Toshiba CR2032 or DL2032 3-volt lithium battery.

Problem	What you can do
No sound	<ul style="list-style-type: none"> • Make sure the speakers are turned on as indicated by the light on the front of the right speaker. • Make sure the speaker volume is not set to the minimum. Press the + button on the right speaker for 2 seconds to raise the volume enough. • Make sure the computer is plugged in and turned on, mute is turned off, and all volume controls are turned up. Refer to “Controlling the volume” on page 6. • Be sure the power pack is securely plugged into the right speaker and into a power outlet or surge protector. • Be sure the AC power outlet is working. When using a computer surge protector or power strip, be sure it is turned on.
No sound from one speaker	<ul style="list-style-type: none"> • Be sure the speaker cable is securely plugged into the right speaker. • Be sure that both ends of the audio input cable, one to the speaker and the other to the computer, are plugged in securely. • Make sure the computer provides stereo sound. If it has one channel only, connect a mono-to-stereo adapter (not supplied) to send the sound to both speakers.
Remote does not control the speakers	<ul style="list-style-type: none"> • Check the battery to be sure it is installed correctly. Refer to the image on page 8. • Refer to “Tips on using the remote control” on page 7.
PC monitor or TV color pattern looks unnatural	<ul style="list-style-type: none"> • Turn off the monitor or TV for 15 to 30 minutes, then turn it on again. • Move the speakers away from the monitor or TV.

PRODUCT DETAILS

Customer Service

For further information or additional help in solving problems, contact your authorized Bose® dealer. Or to contact Bose directly, refer to the contact list included in the carton.

Limited Warranty

This product is covered by a limited warranty.

Details of the limited warranty are provided on the *Product Registration Card* that came with your system. Please fill out the information section on the card and mail it to Bose. To register online instead, visit: www.Bose.com/register. Failure to register will not affect your limited warranty rights.

Technical information

Transducers

Full-range, magnetically shielded drivers with Bose proprietary technology

Input signal

2.0 Vrms maximum

Power pack rating

U.S./Canada: 100-240V ~ 50/60 Hz, 600mA

Europe: 100-240V ~ 50/60 Hz, 600mA

Australia: 100-240V ~ 50/60 Hz, 600mA

Japan: 100-240V ~ 50/60 Hz, 600mA

Worldwide: 100-240V ~ 50/60 Hz, 600mA

Speaker dimensions

4.8"H x 2.5"W x 4.8"D
(12.2 cm x 6.5 cm x 12.3 cm)

Speaker weight

Right speaker: 1.3 lb (0.6 kg)
Left speaker: 1.2 lb (0.5 kg)



307625

BOSE[®]
Better sound through research[®]

©2010 Bose Corporation, The Mountain,
Framingham, MA 01701-9168 USA
AM307625 Rev.04