



# ***Bose® FreeStyle® Speaker System***

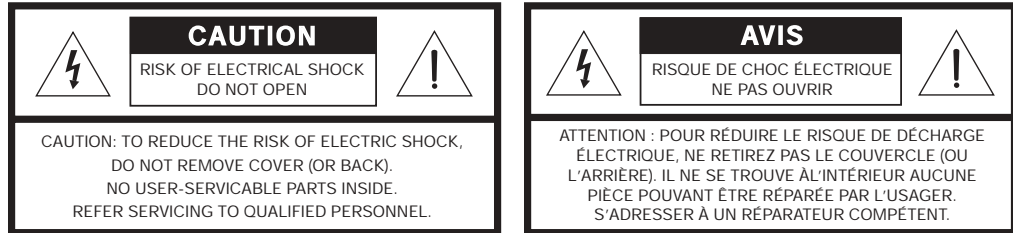
*Owner's Guide*

*July 24, 2002*

*AM267190\_00\_V.pdf*

The Interface module is to be used only with the Acoustimass® module in the Bose® FreeStyle® powered speaker system.

**⚠ WARNING:** To reduce the risk of fire or electric shock, do not expose the system to rain or moisture. The apparatus shall not be exposed to dripping or splashing, and objects filled with liquids, such as vases, shall not be placed on the apparatus.



These CAUTION marks are located on the rear panel of the Acoustimass module:



The lightning flash with arrowhead symbol, within an equilateral triangle, is intended to alert the user to the presence of uninsulated dangerous voltage within the system enclosure that may be of sufficient magnitude to constitute a risk of electric shock.



The exclamation point within an equilateral triangle, as marked on the system, is intended to alert the user to the presence of important operating and maintenance instructions in this owner's guide.

**⚠ CAUTION:** To prevent electric shock, match wide blade of plug to wide slot, insert fully.

### **Class B emissions limits**

This Class B digital apparatus meets all requirements of the Canadian Interference-Causing Equipment Regulations.

### **Batteries**

Please dispose of used batteries properly, following any local regulations. Do not incinerate.

Batteries



### **Additional safety information**

See the additional instructions on the Important Safety Information sheet enclosed with this owner's guide.

### **Please read this owner's guide**

Please take the time to read and follow this owner's guide carefully. It will help you set up and operate your system properly, and enjoy all of its advanced features. Save your owner's guide for future reference.

## Where to find...

Safety Information .....	2
Introduction .....	4
Before you begin .....	4
For your records .....	4
System Setup .....	5
Unpacking .....	5
Selecting locations for your FreeStyle® speakers and Interface module .....	6
Positioning the Interface module .....	6
Placing the speakers .....	7
Selecting a location for the Acoustimass® module .....	8
Make sure your choice is both convenient and safe .....	8
Enjoying the freedom this system allows .....	9
Making system connections .....	10
Follow these basic steps .....	10
Connecting sources .....	11
Follow whatever plan works best .....	11
Preferred game connection .....	12
Alternate connection choice .....	12
Connecting audio to the input labeled VIDEO .....	13
Make the power connection after all the others .....	13
Turning off the internal speakers in your TV .....	14
Operation .....	15
Using the system .....	15
Using the mute button .....	15
Using the source buttons .....	15
Reference .....	16
Taking care of your FreeStyle speaker system .....	16
Cleaning the speakers .....	16
Replacing the remote control battery .....	16
Troubleshooting .....	17
Customer service .....	18
Warranty .....	18
Accessories .....	18
Technical information .....	18

### **Before you begin**

Thank you for purchasing a Bose® FreeStyle® speaker system, which delivers the superior acoustic performance needed to enjoy the full audio impact of video games and other exciting home entertainment.

Using Dolby\* Digital® and Bose VideoStage® signal processing technology, FreeStyle speakers provide improved spaciousness for bold 3-D effects from game audio, movie-like realism from surround encoded DVDs, and a natural soundstage for music. In fact, it provides much of the performance of premium five-speaker systems, yet from a modest array of equipment.

Your system includes:

- Small, easy-to-place shelf speakers
- An attractive floor-standing Acoustimass® module
- Easy-to-use, aim-and-press infrared (IR) remote control
- Interface module with input jacks for connecting source components (like a game console, VCR, DSS, CD changer, or tape deck) and IR signal receiver that processes your remote control commands

### **For your records**

The serial number is located on the rear of the Acoustimass module.

Serial number: \_\_\_\_\_

Dealer name: \_\_\_\_\_

Dealer phone: \_\_\_\_\_ Purchase date: \_\_\_\_\_

We suggest you keep your sales receipt and warranty card together with this owner's guide.

\*"Dolby" and the double-D symbol are trademarks of Dolby Laboratories. Manufactured under license from Dolby Laboratories. Confidential unpublished works. 1992-1997 Dolby Laboratories. All rights reserved.

## Unpacking

Carefully unpack your system. Save all packing materials, which provide the safest way to transport your system as needed.

**WARNING:** To avoid danger of suffocation, keep the plastic bags out of the reach of children.

If any part of the system appears damaged, do not attempt to use it. Notify Bose or your authorized Bose® dealer immediately. For contact information, refer to the address sheet included in the carton.

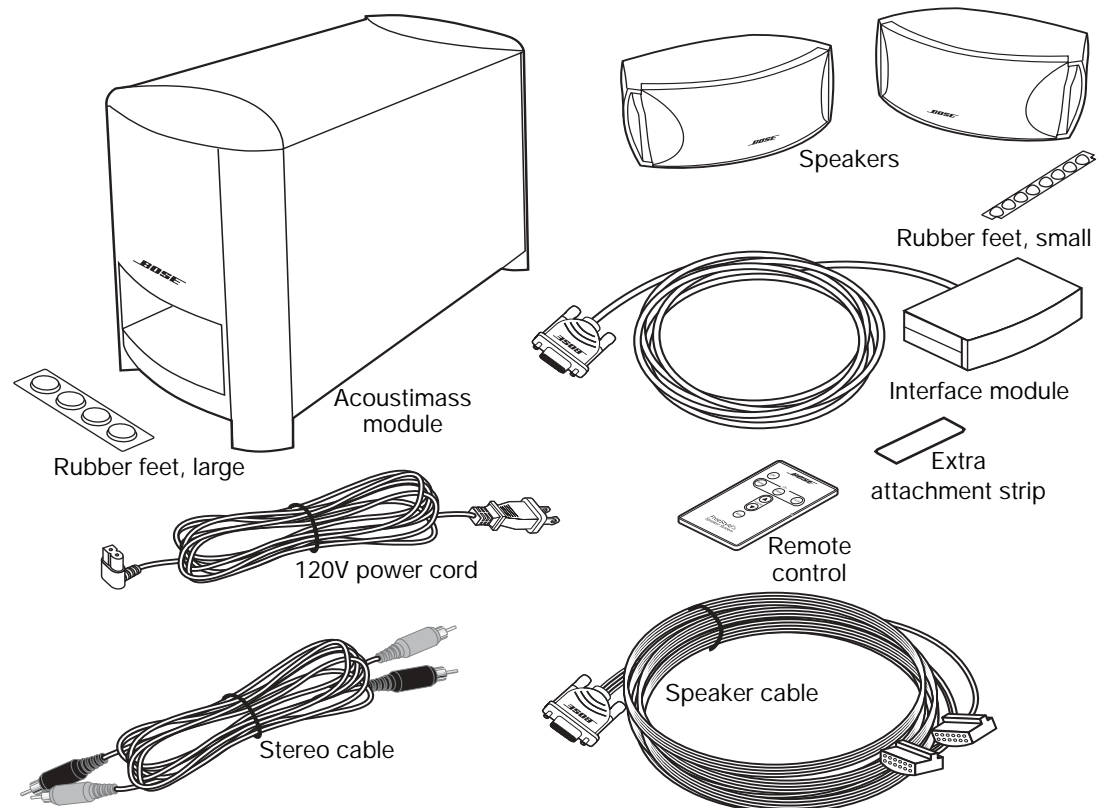
Check to be sure your system includes the parts shown in Figure 1.

**Note:** Now is a good time to find the serial number on the rear of the Acoustimass® module. Copy that number onto your warranty card and in the space provided on page 4.

**Figure 1**

Contents of the shipping carton:

- 2 Speakers
- 4 Rubber feet, large
- 1 Acoustimass module
- 8 Rubber feet, small
- 1 Interface module
- 1 extra attachment strip
- 1 Remote control (battery installed)
- 1 120V power cord (8-foot)
- 1 Stereo cable (6-foot)
- 1 Speaker cable (15-foot)



### Selecting locations for your FreeStyle® speakers and Interface module

Use the following guidelines to choose locations and positions for the speakers and the Interface module. While these guidelines are offered to ensure the best system performance, you may find other placement variations that are more convenient and provide the sound you enjoy.

♪ **Note:** Keep in mind that the Acoustimass® module is the part of this system that connects to a power outlet.

#### Positioning the Interface module

The Interface module is the sound-source connection and communication center for the FreeStyle speaker system. The Interface module receives infrared signals from the remote control to turn the speakers on, change volume, select the input source, and mute or turn off the speaker system. It also sends information to the speakers from any sound sources connected to it.

Remember that the cables of other components, like your video game console, VCR, or DSS, will connect directly to this module, so make sure it is within reach of those cables.

Supplied attachment strips make the module easy to attach in any position – on top of or to the side of the TV (Figure 2), on a shelf, or in any nearby small space.

⚠ **CAUTION:** In placing the Interface module, avoid blocking any ventilation openings on the TV or other equipment.

**Make sure the surface you attach the module to is flat, and:**

- in a clear line of sight to the FreeStyle remote control

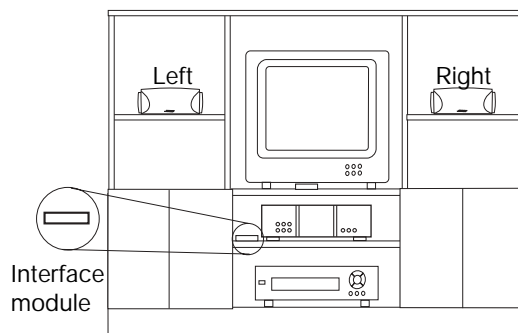
♪ **Note:** If it will be on a high shelf, make sure the edge of the Interface module sticks out slightly at the front of the shelf, or the shelf may block signals from the remote control.

- within 15 feet (4.6 meters) of the Acoustimass module, to which it connects

♪ **Note:** Use the attachment strip on the module to secure it when you have decided on its location. Peel off the protective backing from the strip to reveal the adhesive, then press firmly to attach it to the surface where you want the module placed.

**Figure 2**

Possible Interface module placement



♪ **Note:** Peel off the protective clear lens cover sheet after the Interface module is secured.

### Placing the speakers

These speakers are designed to sit only on their bottom surface (Figure 3). In that position (with the Bose® logo right side up), they can also be mounted on optional Bose brackets, table stands, or floor stands. For details and ordering information, refer to *Accessories* on page 18.

**Figure 3**

*Recommended orientation of the speakers*



Choosing a good location for the speakers will allow you to experience the audio spaciousness and surround effects that your FreeStyle system is designed to deliver.

- Be sure to face each speaker straight ahead (toward the listening area), so that it covers the broadest listening area.

Angling one or both speakers into or away from the listening area significantly alters system performance.

**Figure 4**

*Placement*



- If you are using a bookshelf or a home entertainment unit, place each speaker at the front edge of its shelf.

Positioning these speakers farther back in an enclosed space can change the overall quality of sound and alter the system performance.

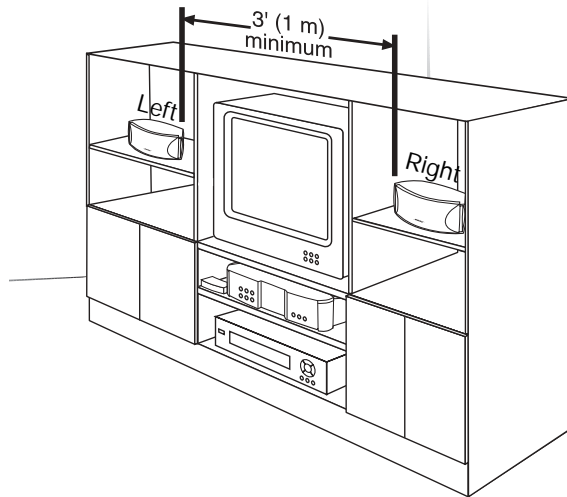
- If you are placing the speakers on a flat surface, be sure to attach the small rubber feet to the bottom surface.

**⚠ CAUTION:** Choose a stable and level surface for both speakers. Vibration can cause the speakers to move, particularly on smooth surfaces like marble, glass, or highly polished wood. If needed, you may obtain additional rubber feet (Part Number 178321) from Bose Customer Service. To contact Bose, refer to the address sheet included in the product carton.

- Place the speakers on top or to the left and right of your TV (Figure 5) and at roughly equal distance from it.

**Figure 5**

Placement of the small speakers near a flat wall or in a corner position



**Note:** The speakers are magnetically shielded to prevent interference when they are on or near the TV.

- Try to maintain at least 3 feet (1 meter) of space between the two speakers.
- Place the speakers no more than 3 feet (1 meter) from the edges of the TV screen.

Bose recommends a maximum distance of 3 feet from each speaker to the edge of the TV screen to prevent the sound from becoming too separated from the picture. You may vary this distance, however, based on room conditions and your personal preference.

- Keep both speakers at approximately the same height.

### Selecting a location for the Acoustimass® module

The Acoustimass module is designed to be the unseen part of this system. It can be placed under or behind furniture, for example, and contribute to the lifelike sound you hear from the speakers without being detected.

#### **Make sure your choice is both convenient and safe**

Place the module in a location that is convenient (under a table, behind a sofa or chair, screened by drapes) but roomy enough for ventilation from the rear panel. Consider the guidelines below when choosing a location.

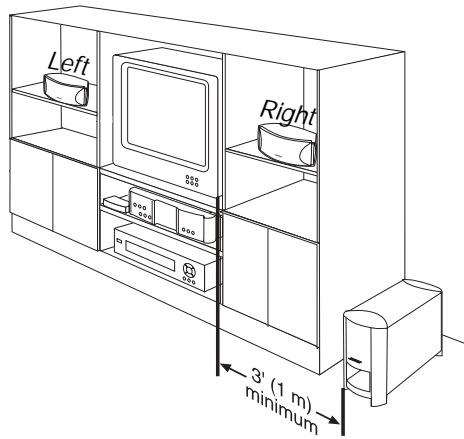
#### **Place the module on a flat surface where it is:**

- within reach of an AC (mains) power outlet
- no more than 15 feet (4.6 meters) from the Interface module
- at the same end of the room as the TV and speakers
- a minimum of 3 feet (1 meter) from the TV to prevent interference from the module, which is not magnetically shielded (Figure 6 on page 9)



**Figure 6**

3-foot distance between the Acoustimass® module and the TV



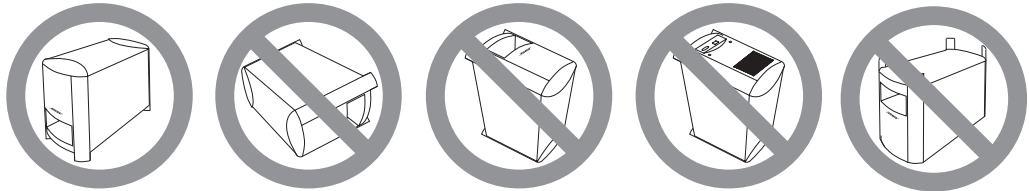
**CAUTION:** The Acoustimass module generates a magnetic field. Although this is not an immediate risk to your video tapes, audio tapes, and other magnetic media, you should not store any of these items directly on or near the module.

**Be sure to:**

- aim the port of the module away from the wall to decrease bass or toward the wall to increase bass (maintain at least 3 inches from the wall).
- stand the Acoustimass module on its legs. Do not lay it on its side or stand it on either end (Figure 7).
- attach the large rubber feet to the bottom of each leg on the module. The rubber feet provide increased stability and protection from scratches.

**Figure 7**

Recommended orientation for the module



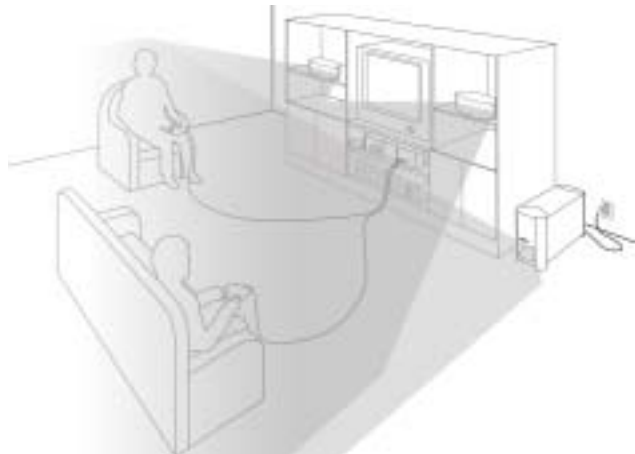
**CAUTION:** Do not block the openings on the back of the module, which provide ventilation for the built-in circuitry.

**Enjoying the freedom this system allows**

When the speakers, Acoustimass module, and Interface module are placed as directed, you can enjoy the freedom to sit, recline, or move about the room while enjoying the full performance of this system (Figure 8).

**Figure 8**

System placement for ideal coverage



**CAUTION:** Be sure to read the section on making connections before you plug in the system.

## Making system connections

Labeled jacks on the rear of the Acoustimass® module and the custom cables supplied with the system ensure a fast and easy hookup.

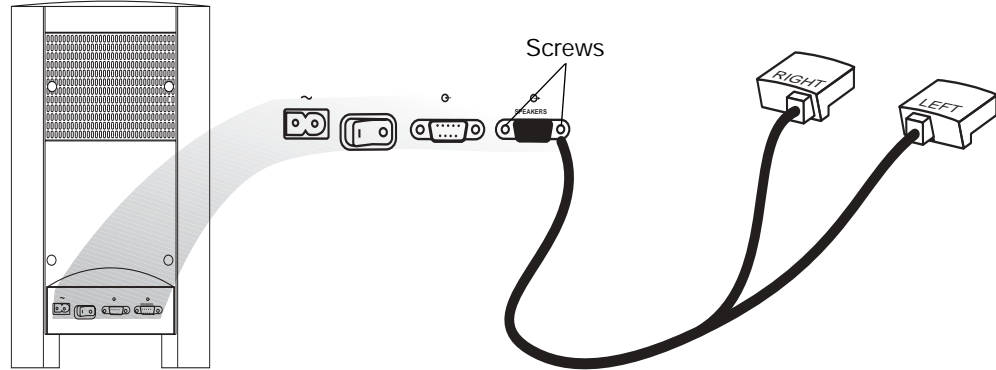
**⚠ CAUTION:** Do not plug the Acoustimass module into an AC power (mains) outlet until all the source components are connected to the Interface module.

### Follow these basic steps

1. On the rear panel of the Acoustimass module, insert the single-plug end of the speaker cable into the SPEAKERS connector (Figure 9). Firmly tighten the two screws on the connector.

**Figure 9**

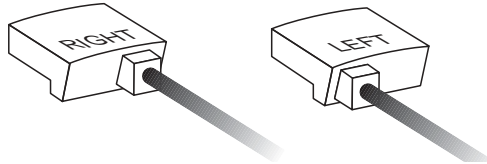
Speaker cable connection to the Acoustimass module



2. At the other end of the speaker cable, grasp the two connectors and pull the cable apart as much as necessary to reach each speaker.
3. Plug the LEFT connector of the separated cable into the rear jack on the left speaker (to the left of the TV as you face it) and the RIGHT connector into the rear jack on the right speaker (to the right of the TV). LEFT or RIGHT is printed on the appropriate connector (Figure 10).

**Figure 10**

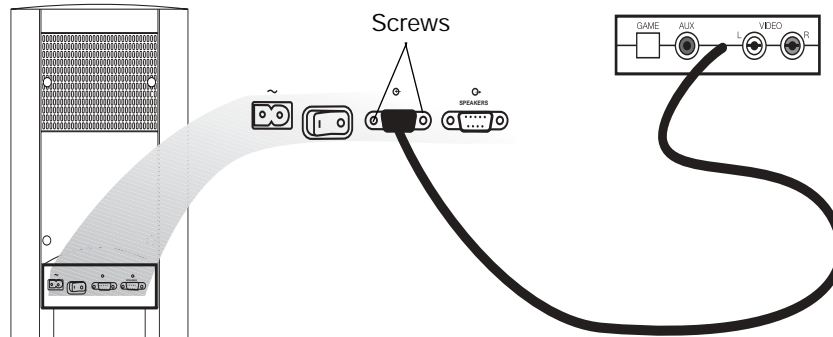
LEFT and RIGHT markings on the speaker connectors



4. On the Acoustimass module, insert the Interface module connector into the jack labeled with an input symbol (Figure 11). Firmly tighten the two screws on the connector.

**Figure 11**

Interface cable connector



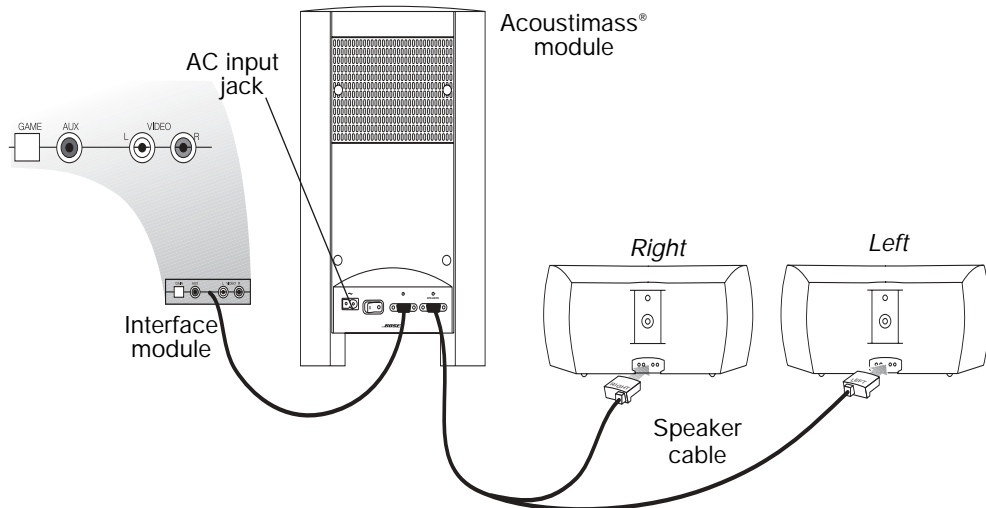
**🎵 Note:** Longer speaker cable is available from Bose, if you need it. To contact Bose to order it, refer to the address sheet included in the carton.

## Connecting sources

After all of the FreeStyle® system parts are connected (Figure 12), use the jacks on the Interface module to connect the audio outputs of a game console, TV/VCR, or other audio components.

**Figure 12**

Interface module jacks available after completed connection of the supplied system parts



There are three jacks on the Interface module, marked GAME, AUX, and VIDEO (Figure 13), and multiple possibilities for connecting both analog and digital components to them.

**Figure 13**

Connection jacks on the Interface module

Designed to deliver the best performance from your game console (which may or may not include the required optical cable).

Or, use this jack for other digital sources, if you prefer.



For digital input from a digital source, like DSS or DVD.



VIDEO



Use this analog input for a VCR, TV, or your game console (if you do not have an optical cable or the game console does not support that option).

Refer to the preferred and alternate system connection options that are described and illustrated on page 12.

**Note:** If you have more than one component with optical outputs, you can connect one of them using its analog audio inputs instead. You can connect the left and right analog inputs to the VIDEO source L & R inputs on the Interface module. Or you can use a coaxial converter. To order that converter from Bose®, ask for Part Number 253561. To contact Bose, refer to the address sheet included in the carton.

### Follow whatever plan works best

When you decide on the best choice for your setup, connect your sources as shown in the diagram that applies.

## Preferred game connection

For Dolby Digital 5.1 surround sound reproduction – a big feature on many of today's latest game titles – we recommend connecting the optical cable (provided with the game system or offered as optional equipment) from your game console to the GAME jack, as shown in Figure 14.

This leaves the VIDEO jacks, marked L and R, for audio from the fixed or variable audio output of your TV and any analog component (such as a VCR) connected to it. Digital audio equipment, like a cable or satellite box or multi-disc changer, is ideal for use with the AUX jack.

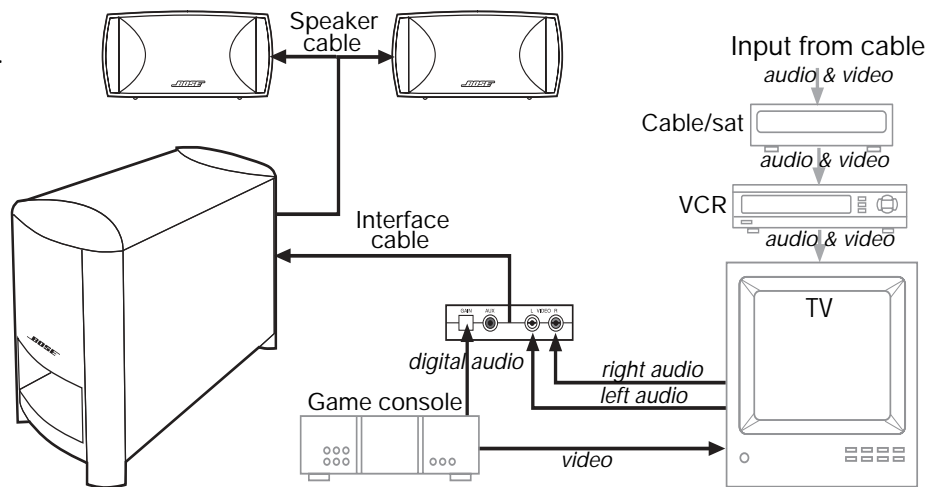
Making connections as suggested above is the most efficient way for you to enjoy outstanding audio performance from a wide range of audio/video equipment.

Just be sure to connect the video output from any of these sources to your TV and set it for the proper video input.

🎵 **Note:** Be sure to read the Important Note on page 13 for help in setting the TV properly.

**Figure 14**

Recommended connection of the optical cable to the GAME jack



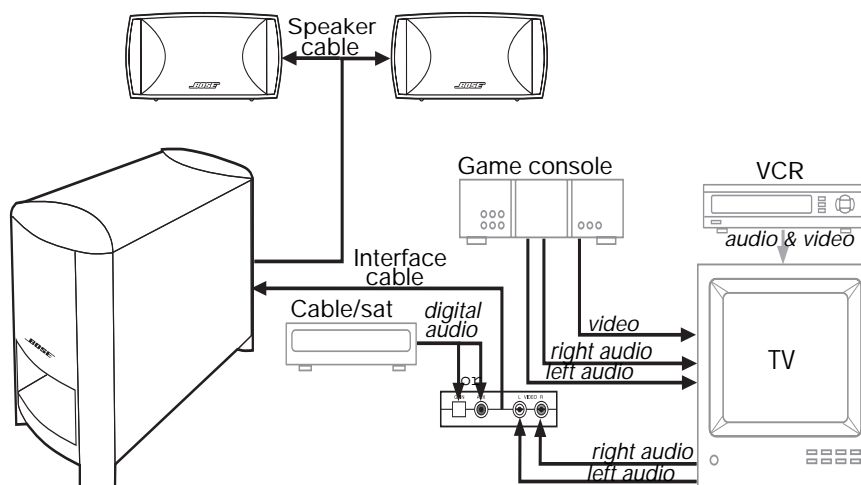
## Alternate connection choice

There are other ways to connect to this speaker system if your game console does not support Dolby Digital 5.1, or you choose not to use it for some other reason. Instead, you can use the RCA connections of your game console to connect it as shown in Figure 15.

This still allows you to connect digital equipment, such as a cable or satellite box or multi-disc changer, directly to one of the digital input jacks on the Interface module. Use a digital coaxial cable with the AUX jack or an optical cable for input to the jack marked GAME.

**Figure 15**

Alternate means of connecting your components



### Connecting audio to the input labeled VIDEO

When connecting audio from a video component to the VIDEO L and R jacks on the Interface module, remember to:

- use standard RCA audio cables (one is supplied with the FreeStyle® speakers)
- match the red connector to the right channel (R) and the white (or black) connector to the left channel (L)
- use a Y-adapter (available at electronics stores) to connect to a mono source

For further details on making the video connections between your game console and TV, refer to the manuals for those video components.

**Important Note:** *Your television must be set for VIDEO INPUT when playing a game console. If it is not set properly, you may hear the sound, but will not see the picture on the TV screen.*

*For most TV models\*, there is a button labeled either TV/VIDEO, INPUT, or AUX IN (or a similar term) for you to use. When the video input is correctly selected, the word VIDEO, AUX, or LINE IN usually appears in a corner of the TV screen.*

*If you are unable to locate the video input of your television, please consult the manufacturer of your TV.*

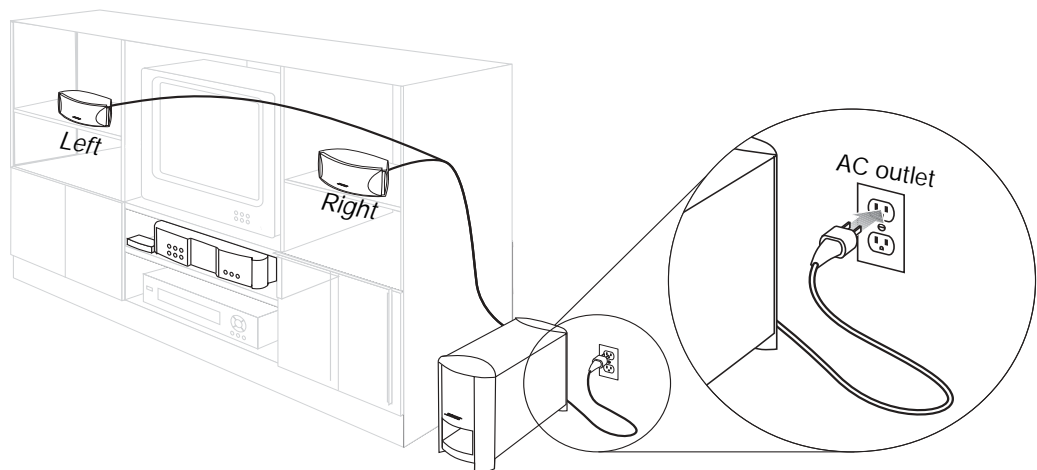
\*Other TV models (in particular, some GE/RCA/Proscan models) assign the video input to channel 00 or 91, so you need to select that channel to receive the video input.

### Make the power connection after all the others

To make the final connection, insert the small connector end of the power cord into the AC INPUT jack on the module (refer to Figure 12 on page 11). Insert the large end of the cord into an AC power (mains) outlet (Figure 16).

**Figure 16**

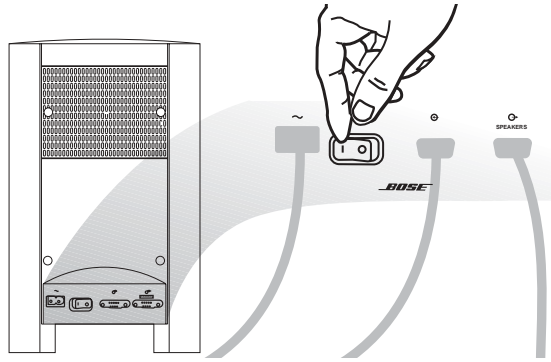
*Power cord as the final connection*



Turn on the power switch on the back panel of the module (Figure 17).

**Figure 17**

*Power switch on the back of the module*



### ***Turning off the internal speakers in your TV***

When you listen to TV sound through your FreeStyle® speaker system, the speakers in your TV should not be on. Use the on-screen menus in your TV to select INTERNAL SPEAKERS: OFF (the exact on-screen message may be different). Refer to your TV owner's guide for detailed instructions.

If your TV does not have an option to turn off the internal speakers, reduce the volume of your TV by using its lowest setting.

## Using the system

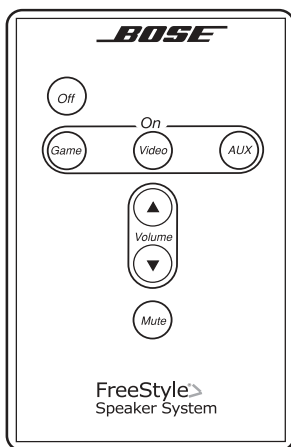
With the battery already installed in the remote control, your FreeStyle® system is now ready for use.

- ♪ **Note:** Be sure to point the remote control directly at the Interface module when you press a button.

  - To turn your system on, simply press one of the three source buttons (Figure 18). This turns on the FreeStyle speakers and plays the source connected to the Game, AUX, or Video input.
  - To change your source selection, press the button for the source you prefer.
  - To adjust the volume of the selected source (which may vary noticeably from one component to the next), use the up (▲) and down (▼) volume arrows.
  - To turn the system off, use the Off button (⏻).
- ♪ **Note:** While the remote control selects the source of the sound you will hear through the FreeStyle speakers, it cannot turn on that source. Use the power button on the component, or on the remote provided with it, to turn the component on or off. Refer to the owner's guide that came with it for further information on use of the component.

**Figure 18**

Remote control buttons



### Using the Mute button

Use the Mute button when you want to immediately silence the speakers.

Press the button once to mute the speakers and again to unmute them.

### Using the source buttons

Pressing one of the three source buttons turns the system on and plays the component connected to that input.

## Taking care of your FreeStyle® speaker system

Caring for your system may include cleaning the speaker enclosures and replacing the remote control battery.

### Cleaning the speakers

- Clean the surface of your speakers with a soft, damp cloth. You can use an ammonia-free window cleaner on a soft cloth to maintain the finish.
- Do not use any sprays near the speakers. Do not use any solvents, chemicals, or cleaning solutions containing alcohol, ammonia, or abrasives.
- Do not allow liquids to spill into any openings.
- The speaker grilles require no special care, although you may vacuum them carefully, if necessary.

### Replacing the remote control battery

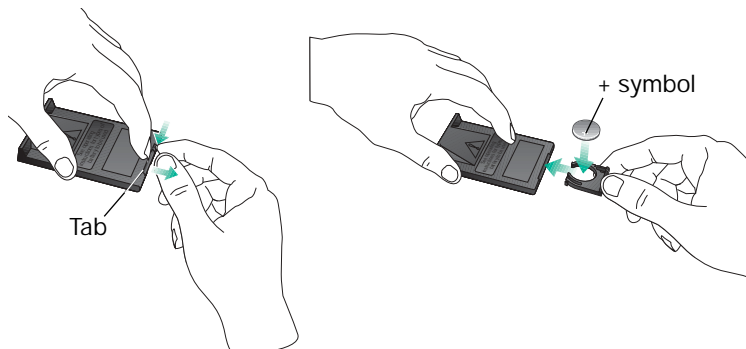
**⚠ WARNING:** Keep the remote control battery away from children. It may cause a fire or chemical burn if mishandled. Do not recharge, disassemble, heat above 100°C (212°F), or incinerate. Dispose of used battery properly. Replace only with a battery of the correct type and model number.

**⚠ CAUTION:** Danger of explosion if battery is incorrectly replaced. Replace only with the same or equivalent type.

1. Place the remote control face down on a flat surface.
2. Using your finger, push the tab lock to the side and hold, as shown. Slide the battery compartment open and remove the spent battery.

**Figure 19**

Locating the tab-type safety lock



**🎵 Note:** Use only a Duracell, Eveready, Maxell, or Toshiba CR2032 or DL2032 lithium battery (available at electronics stores). If you have difficulty finding a replacement battery, contact Bose® Customer Service. For contact information, refer to the address list included with the system.

3. Keeping the remote control face down, insert the new battery into the compartment with the + symbol facing up.
4. Gently slide the battery compartment closed. It locks automatically.



## Troubleshooting

Problem	What to do
System doesn't do anything	<ul style="list-style-type: none"> <li>• Make sure the power switch on the Acoustimass<sup>®</sup> module is turned on. See Figure 17 on page 14.</li> <li>• Make sure the power cord is inserted securely into the Acoustimass module and plugged firmly into an operating AC wall outlet.</li> <li>• Be sure to select a source connected to Game, AUX or Video.</li> <li>• Unplug the Acoustimass module power cord from the outlet for a minute, then reconnect it. This allows the unit to reset itself.</li> </ul>
No sound  (while using the GAME optical input)	<ul style="list-style-type: none"> <li>• Increase the volume.</li> <li>• Check to see if the sound source is muted. Press the remote control Mute button to unmute it.</li> <li>• Make sure you have selected the Dolby Digital, Dolby Surround or PCM stereo track, all of which are supported by this system. DTS signals are not supported.</li> <li>• Make sure the Interface module and speaker cables are both firmly seated in the jacks on the Acoustimass module.</li> <li>• Check speaker connections.</li> <li>• Check the connections of sound-source components. Make sure to select the correct source for the desired input.</li> <li>• If the source is a disc player, make sure a disc is placed in its tray.</li> <li>• Turn the Acoustimass module off for 10 seconds, then on again, to restore communication between the Interface module and the speakers.</li> <li>• Unplug the power cord from the outlet for a minute, then reconnect it. This allows the unit to reset itself.</li> <li>• At the source, be sure that both the Dolby Digital output and the optical output are turned on. Refer to your source component owner's guide for details.</li> </ul>
Sound but no picture	<ul style="list-style-type: none"> <li>• Make sure the TV is on.</li> <li>• When playing a video source, make sure the TV is set for the proper video input. See Important Note on page 13.</li> </ul>
Remote control is inconsistent or does not work	<ul style="list-style-type: none"> <li>• Check the battery to be sure it is installed properly. See "Replacing the remote control battery" on page 16.</li> <li>• Point the remote control at the Interface module.</li> <li>• Relocate the Interface module, making sure it is in a clear line of sight to the remote and there are no obstructions.</li> </ul>
Sound is distorted	<ul style="list-style-type: none"> <li>• Make sure speaker cables are not damaged and the connections are secure.</li> <li>• Reduce the output level from any external components connected to the Interface module.</li> </ul>
Different languages are being reproduced by the two speakers	<ul style="list-style-type: none"> <li>• Press the source button one or more times until you hear the language you want from both speakers. This situation occurs only when you select a digital source and that source material is being broadcast in more than one language. Pressing the source button allows you to toggle from that language... to a second language... to both languages...then back to the first language.</li> </ul>

## Customer service

For additional help in solving problems, contact Bose® Customer Service. Refer to the address sheet included with the system.

## Warranty

The FreeStyle® speaker system is covered by a limited transferable warranty. Details of the warranty are provided on the product registration card that came with your system. Please fill out the information section on the card and mail it to Bose.

## Accessories

The FreeStyle shelf speakers are compatible with Bose mounting accessories, including the UB-20 wall brackets, UFS-20 floor stands and UTS-20 table stands. Bose also offers cable adapters, for use in running speaker cable through walls, and longer speaker wire, as needed.

For further information or to order mounting brackets, stands, or cable adapters, contact your Bose dealer. Or, to call Bose directly, refer to the address sheet included in the carton.

## Technical information

### Power rating

USA/Canada: 120VAC, 60 Hz, 300W

### Source Inputs

VIDEO, AUX, GAME

### Dimensions

Speakers:

3<sup>1</sup>/<sub>2</sub>"H x 7<sup>7</sup>/<sub>8</sub>"W x 5<sup>1</sup>/<sub>4</sub>"D  
(8.7 cm x 19.9 cm x 13.6 cm)

Acoustimass® module:

14<sup>1</sup>/<sub>2</sub>"H x 8<sup>3</sup>/<sub>4</sub>"W x 19<sup>1</sup>/<sub>8</sub>"D  
(36.7 cm x 22.2 cm x 48.5 cm)

### Weight

Speakers: 2.7 lb (1.2 kg) each

Acoustimass module: 23.3 lb (10.6 kg)

### Finish

Speakers: polymer

Acoustimass module: polymer





***BOSE***<sup>®</sup>  
*Better sound through research*<sup>®</sup>

©2002 Bose Corporation  
The Mountain, Framingham, MA 01701-9168 USA  
267190 AM Rev.00 JN30416