

# QUICK START GUIDE

## L1® Compact Wireless Package

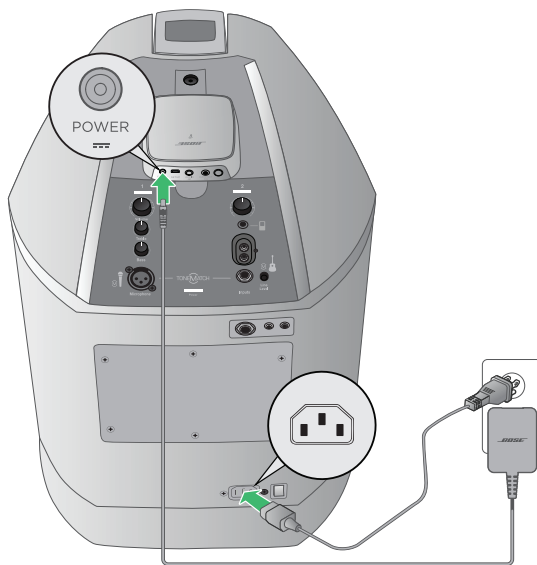


### Check Contents

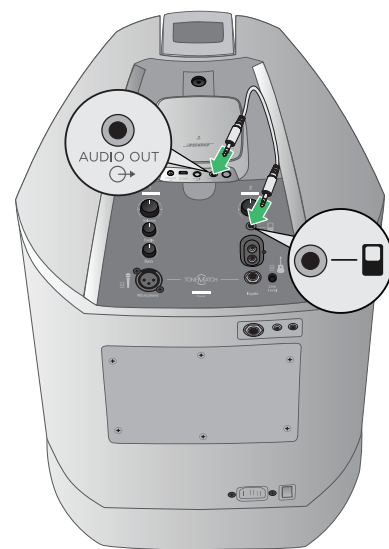
- L1® Compact Power Stand box
- L1® Compact Extensions box
- SoundTouch® Wireless Link adapter box



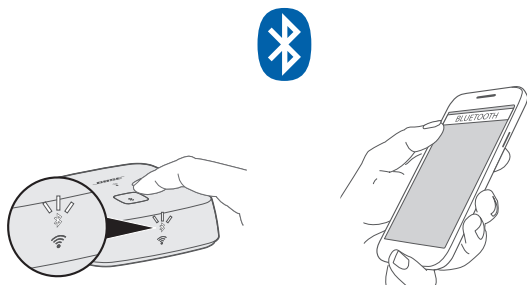
1




2



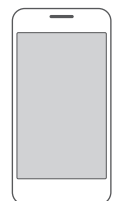
3



### Stream music from a smartphone or tablet via **Bluetooth**®

1. Press and hold  until the indicator blinks white.
2. On your smartphone or tablet, turn on the Bluetooth feature.
3. From the device list, select your SoundTouch system.

WiFi®



Download the **SoundTouch® Controller app**.\*

\*If using a computer go to [global.Bose.com/Support/STWL](http://global.Bose.com/Support/STWL) to download the app.

Please read and keep all safety and use instructions.



796189-0010



[global.Bose.com/Support/STWL](http://global.Bose.com/Support/STWL)

©2017 Bose Corporation, The Mountain, Framingham, MA, 01701-9168 USA  
AM796189 Rev. 00