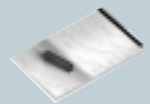
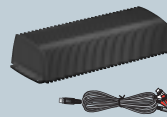
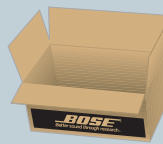


Lifestyle Stereo Amplifier

Installation Guide • Guía de Instalación • Notice d'utilisation

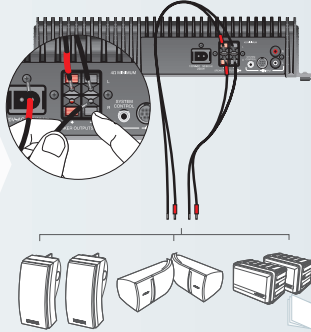


5

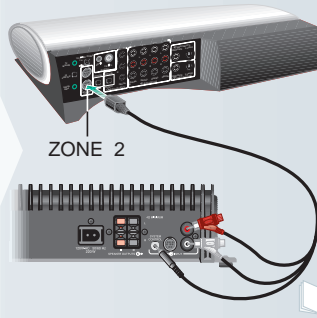
1 Identify your system
Identifique su sistema
Identifiez votre système



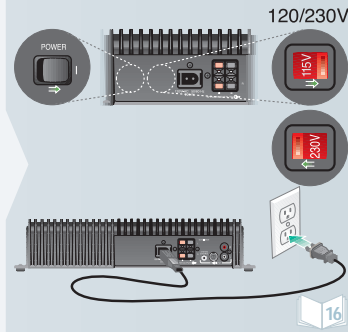
2 Connect the cables
Conecte los cables
Conectez les câbles



3 Connect to music center
Conecte al centro de música
Raccordez à l'unité centrale



4 Plug the power cord into an AC (mains) outlet
Enchufe el cordón de corriente a una toma de corriente continua
Branchez le cordon d'alimentation sur une prise de courant alternatif



5 Remote setup
Configuración del mando de control remoto
Réglages sur la télécommande

