



Setup Guide
Installationsvejledning
Einrichtungsanleitung
Installatiehandleiding
Guía de instalación
Asennusopas
Guide d'installation
Guida all'installazione
Üzembe helyezési útmutató
Podręcznik konfiguracji
Guia de Configuração
Snabbinstallationsgui

VideoWave® III

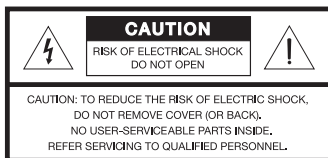
entertainment system

Safety Information

Please read this guide

Please take the time to follow the instructions in this setup guide carefully. They will help you set up and operate your system properly and enjoy its advanced features. Please save all safety and operating instructions, including this guide, for future reference.

All Bose® products must be used in accordance with local, state, and federal law, and industry standards.



The lightning flash with arrowhead symbol within an equilateral triangle alerts the user to the presence of uninsulated, dangerous voltage within the system enclosure that may be of sufficient magnitude to constitute a risk of electric shock.



The exclamation point within an equilateral triangle, as marked on the system, is intended to alert the user to the presence of important operating and maintenance instructions in this owner's guide.



WARNINGS:

- To reduce the risk of fire or electrical shock, do not expose the product to rain or moisture.
- Do not expose this apparatus to dripping or splashing, and do not place objects filled with liquids, such as vases, on or near the apparatus. As with any electronic products, use care not to spill liquids into any part of the system. Liquids can cause a failure and / or a fire hazard.
- Do not place any naked flame sources, such as lighted candles, on or near the apparatus.
- Keep the remote control batteries away from children. They may cause a fire or chemical burn if mishandled. Do not recharge, disassemble, heat above 212°F (100°C), or incinerate. Dispose of used batteries promptly. Replace only with batteries of the correct type and model number.



廢電池請回收

Please dispose of used batteries properly, following any local regulations. Do not incinerate.



WARNINGS:

- Contains small parts that may be a choking hazard. Not suitable for children under age 3.
- Never place the equipment on an unstable surface. The equipment may fall, causing serious personal injury or death. Many injuries, particularly to children, can be avoided by taking simple precautions such as:
 - Only using furniture that can safely support the equipment.
 - Ensuring the equipment is not overhanging the edge of the supporting furniture.
 - Not placing the equipment on furniture (for example, cupboards or book-cases) without appropriately anchoring both the furniture and the equipment to a wall.
 - Not placing toys or other items on top of the equipment.
 - Not standing the equipment on cloth or other materials placed between the equipment and supporting furniture.
 - Educating children about the dangers of playing with the equipment and climbing on furniture to reach the equipment.
- Allowing children to push, pull, or climb on the monitor may cause it to tip over, possibly resulting in personal injury or death.
 - For safety and greater stability, installation of the included anti-tip straps is recommended.
 - Be sure to install both anti-tip straps according to the instructions on page 10.
- If wall-mounting the monitor, follow the wall bracket manufacturer's instructions and the guidelines provided here and on page 12. Unsafe mounting of any heavy load can result in serious injury and property damage.
 - Use only an agency-approved wall-mount bracket capable of supporting a 150 lb. (68 kg) product.
 - Make sure the wall bracket is installed according to all applicable building codes.
 - If you doubt your ability to safely wall-mount this product, contact a professional installer for help.
- Long-term exposure to loud audio may cause hearing damage. It is best to avoid extreme volume when using the system with or without headphones, especially for extended periods.



**CAUTIONS:**

- Make no modifications to the system or accessories. Unauthorized alterations may compromise safety, regulatory compliance, and system performance, and may void the warranty.
- Due to ventilation requirements, do not place the monitor in a confined space such as in a wall cavity or in an enclosed cabinet.
- Do not block any of the ventilation openings on the rear panel of the monitor. These openings provide the necessary ventilation to ensure reliable operation and to prevent overheating.
- Do not place the monitor near or over a source of heat.

NOTES:

- Where the mains plug or appliance coupler is used as the disconnect device, such disconnect device shall remain readily operable.
- The product must be used indoors. It is neither designed nor tested for use outdoors, in recreation vehicles, or on boats.
- This product is intended to be used only with the power supply provided.
- Product labels are located on the bottom of the control console, on the back of the monitor, and inside the battery compartment door of the remote control.

Important Safety Instructions

1. Read these instructions.
2. Keep these instructions.
3. Heed all warnings.
4. Follow all instructions.
5. Do not use this apparatus near water.
6. Clean only with a dry cloth.
7. Do not block any ventilation openings. Install in accordance with the manufacturer's instructions.
8. Do not install near any heat sources such as radiators, heat registers, stoves, or other apparatus (including amplifiers) that produce heat.
9. Protect the power cord from being walked on or pinched particularly at plugs, convenience receptacles, and the point where they exit from the apparatus.
10. Only use attachments/accessories specified by the manufacturer.
11. Unplug this apparatus during lightning storms or when unused for long periods of time.
12. Refer all servicing to qualified personnel. Servicing is required when the apparatus has been damaged in a way, such as power-supply cord or plug is damaged, liquid has been spilled or objects have fallen into the apparatus, the apparatus has been exposed to rain or moisture, does not operate normally, or has been dropped.

Please complete and retain for your records

Control console serial number (on bottom panel): _____

Display panel serial number (under connector cover): _____

Purchase date: _____

We suggest you keep your receipt with this owner's guide.

Safety Information

NOTE: This equipment has been tested and found to comply with the limits for a Class B digital device, pursuant to Part 15 of the FCC Rules. These limits are designed to provide reasonable protection against harmful interference in a residential installation. This equipment generates, uses, and can radiate radio frequency energy and, if not installed and used in accordance with the instructions, may cause harmful interference to radio communications. However, there is no guarantee that interference will not occur in a particular installation. If this equipment does cause harmful interference to radio or television reception, which can be determined by turning the equipment off and on, the user is encouraged to try to correct the interference by one or more of the following measures:

- Reorient or relocate the receiving antenna.
- Increase the separation between the equipment and receiver.
- Connect the equipment to an outlet on a different circuit than the one to which the receiver is connected.
- Consult the dealer or an experienced radio/TV technician for help.

This device complies with part 15 of the FCC Rules. Operation is subject to the following two conditions: (1) This device may not cause harmful interference, and (2) this device must accept any interference received, including interference that may cause undesired operation.

This Class B[*] digital apparatus complies with Canadian ICES-003.

These devices comply with FCC and Industry Canada RF radiation exposure limits set forth for general population. They must not be co-located or be operating in conjunction with any other antennas or transmitters.

This device complies with Industry Canada licence-exempt RSS standard(s). Operation is subject to the following two conditions:

(1) This device may not cause interference, and (2) this device must accept any interference, including interference that may cause undesired operation of the device.

Remote control output power: 2.3 mW @ 2.4 GHz

Console output power: 1.5 mW @ 2.4 GHz

Changes or modifications not expressly approved by Bose Corporation could void the user's authority to operate this equipment.

The temperature range of this product is 0° C to +55° C.



This product conforms to all applicable EU directive requirements.

The complete declaration of conformity can be found at www.Bose.com/compliance.

Names and Contents of Toxic or Hazardous Substances or Elements						
Part Name	Toxic or Hazardous Substances and Elements					
	Lead (Pb)	Mercury (Hg)	Cadmium (Cd)	Hexavalent (CR(VI))	Polybrominated Biphenyl (PBB)	Polybrominated Diphenyl Ether (PBDE)
PCBs	X	0	0	0	0	0
Metal parts	X	0	0	0	0	0
Plastic parts	0	0	0	0	0	0
Speakers	X	0	0	0	0	0
Cables	X	0	0	0	0	0
0: Indicates that this toxic or hazardous substance contained in all of the homogeneous materials for this part is below the limit requirement in SJ/T 11353-2006.						
X: Indicates that this toxic or hazardous substance contained in at least one of the homogeneous materials used for this part is above the limit requirement in SJ/T 11353-2006.						

Apple, iPhone, iPod, and Mac are trademarks of Apple Inc., registered in the U.S. and other countries.

HDMI and the HDMI logo are trademarks or registered trademarks of HDMI Licensing LLC in the United States and other countries.

©2013 Bose Corporation. No part of this work may be reproduced, modified, distributed, or otherwise used without written permission.

Introduction

Welcome.....	6
Product overview.....	6
Unpacking.....	6

Physical Setup

Monitor placement and connections.....	7
Monitor placement recommendations.....	7
Placing the monitor with the stand.....	8
Installing the anti-tip straps.....	10
Wall-mounting the monitor.....	12
Control console placement and connections.....	14

Interactive Setup

Starting the system.....	16
--------------------------	----

Introduction

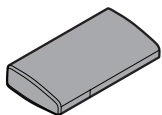
Welcome

Thank you for choosing the Bose® VideoWave® III entertainment system. This guide provides you with step-by-step instructions for setting up your new entertainment system.

Note: Professional installation is recommended.

Product overview

The VideoWave® III entertainment system includes a HD monitor, a stand, a control console, and a remote control.



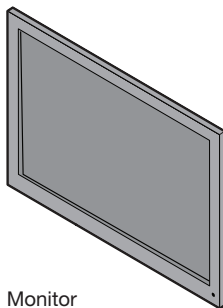
Control console



Bose® click pad
remote control



Stand



Monitor

Unpacking

The parts of your new system are packaged in two boxes.

1. The large rectangular box contains the monitor.
2. The smaller box contains the control console, monitor stand, screws, and two numbered boxes.

Box **1** contains the system parts used during the physical setup.

Box **2** contains the system parts used during the interactive setup.

Carefully unpack each item as you proceed through the setup.

Be sure to save all of the packing materials. These provide the safest means for any necessary shipping or transporting.

If any part appears damaged, do not attempt to use it. Notify Bose or your authorized Bose dealer immediately. For Bose contact information, refer to the address sheet included in the box containing the monitor stand.

Monitor placement and connections

The monitor can be placed on furniture, using the attached stand, or it can be mounted on a wall.

WARNING: The 46 in. monitor weighs 120 lbs. (54 kg). The 55 in. monitor weighs 135 lbs. (61 kg). To prevent personal injury, a two-person lift is required.

CAUTIONS:

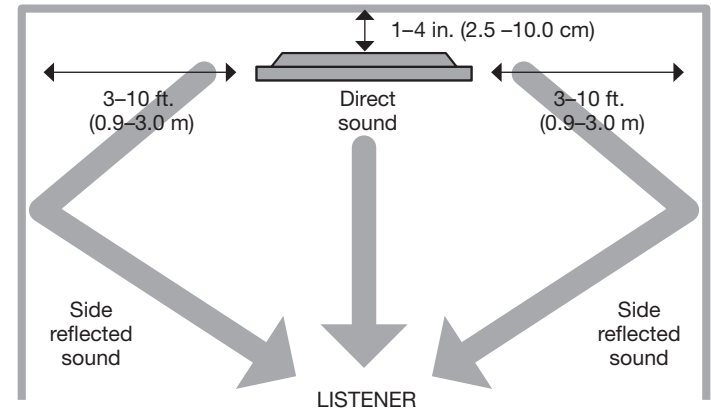
- Do not mount or place the monitor in a recessed area or cabinet. This can block the ventilation openings and affect the acoustic performance.
- If the VideoWave system is mounted over a fireplace, it must be placed over a mantle that is a minimum of 6 in. (15.3 cm) deep to protect the system from overheating.

Monitor placement recommendations

Much like a live performance in a concert hall, the Bose® VideoWave® III entertainment system relies on the reflective surfaces of the room to deliver a spacious home theater experience. The system features ADAPTiQ® audio calibration technology, which customizes the sound during setup based on where the system is positioned, as well as the size, shape, and furnishings of the room it is in.

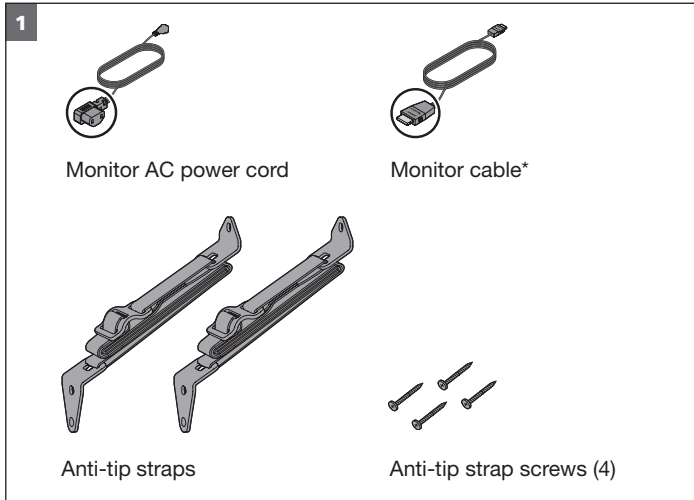
The following recommendations help you place the monitor in the best possible location:

- The back of the monitor should be approximately 1–4 in. (2.5–10.0 cm) from a wall.
- Allow 3–10 ft. (0.9–3.0 m) between the monitor and the side walls of the room.
- Allow at least 8 in. (20 cm) of clearance from the top of the monitor to any surface above (such as a shelf) to allow for proper ventilation and acoustic performance.
- The area between the side walls and the monitor should be free of as many objects as possible that would block the sound, such as tall bookcases and storage cabinets.
- To enjoy the best audio and video performance, position the vertical center of the screen at eye level when seated.



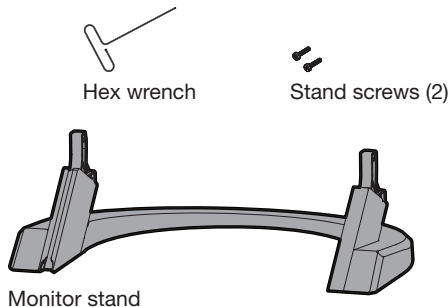
Physical Setup

Here is what you need from Box 1:



**The supplied monitor cable is not rated for in-wall use. In-wall monitor cables are available from Bose or a Bose authorized dealer.*

You also need the stand, screws, and wrench:

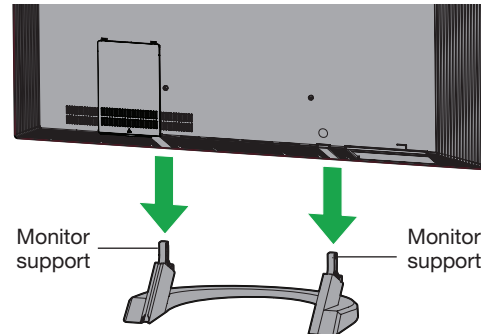


Placing the monitor with the stand

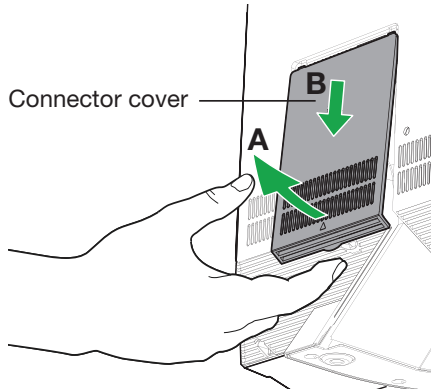
Before you place the monitor, attach the stand.

1. Unpack the stand, stand screws, and monitor.
2. Lower the monitor onto the stand, carefully lining up the holes in the bottom of the monitor with the supports on the stand.

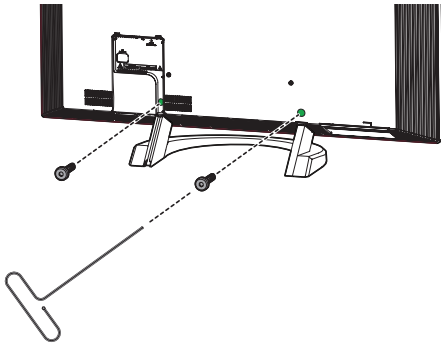
WARNING: The 46 in. monitor weighs 120 lbs. (54 kg). The 55 in. monitor weighs 135 lbs. (61 kg). To prevent personal injury, a two-person lift is required.



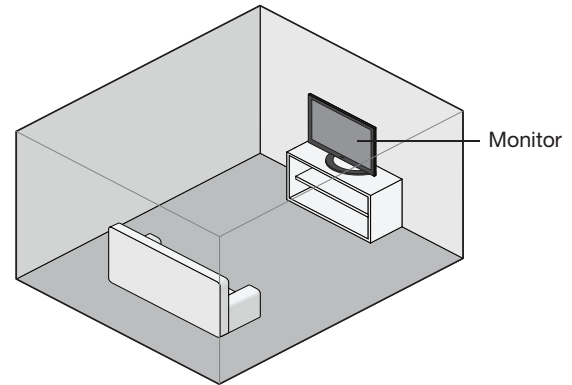
3. On the rear panel of the monitor, firmly pull out on the bottom of the connector cover (A), and pull down (B) to remove it.



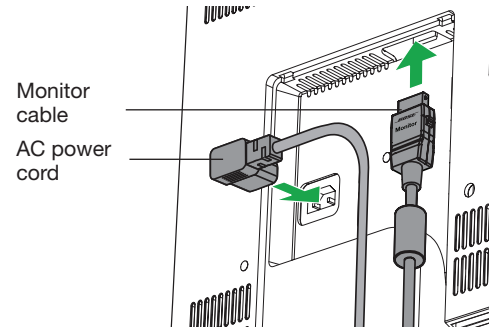
4. Insert the screws into the holes on the back of the monitor and tighten using the provided 5/32 in. (4 mm) hex wrench.



5. Place the monitor on a flat, stable surface capable of supporting the combined weight of the stand and the monitor—46 in. (135 lbs/61 kg), 55 in. (150 lbs/68 kg).

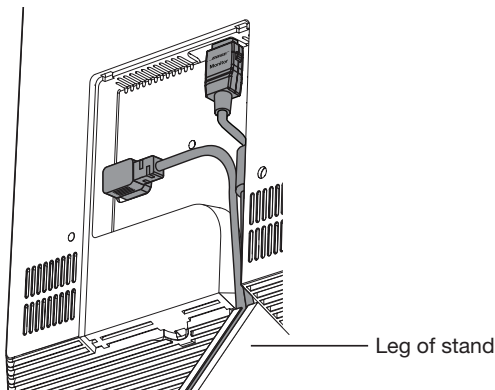


6. Attach the monitor cable and AC power cord to the monitor as shown.



Physical Setup

7. Route both cords through the leg of the stand and re-attach the connector cover.



8. Plug the AC power cord from the monitor into a live AC (mains) outlet.
9. Restore the connector cover.

CAUTION: Bose® strongly recommends installing the supplied two anti-tip straps that, when properly installed, provide an extra measure of security in the event that the monitor accidentally starts to tip over.

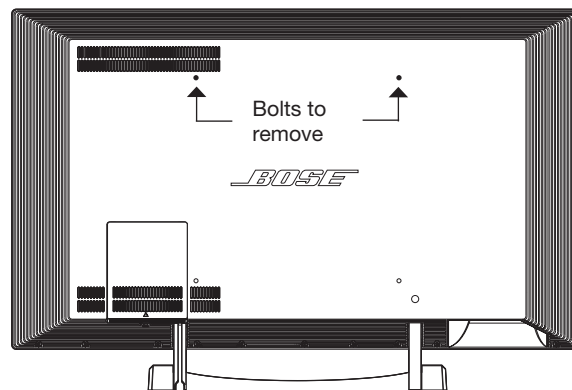
Installing the anti-tip straps

It is important that you install both straps according to the following instructions.

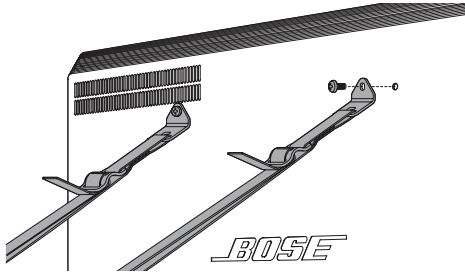
WARNING: Do not use the anti-tip straps for any application other than the one specified in this setup guide.

CAUTION: If you are unsure of the construction methods used in the space where you are setting up the monitor, or if you do not understand these instructions or have any concerns or questions, please contact a professional installer.

1. Using the provided 5/32 in. (4 mm) hex wrench, remove the top two bolts from the rear panel of the monitor.



2. Using the same bolts, attach the two straps to the back of the monitor.

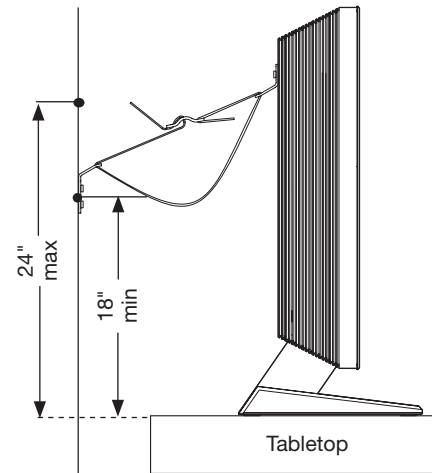


CAUTION: The included screws are for use only into wood-studded wall constructions with 1 in. (maximum) drywall. For all other types of wall construction, please contact a professional installer. Use caution to avoid any electrical or plumbing lines running through the studs.

3. Locate the two wall studs closest to the straps. Each strap should be attached to the wall stud closest to it.

CAUTION: Do not attach both straps to the same stud.

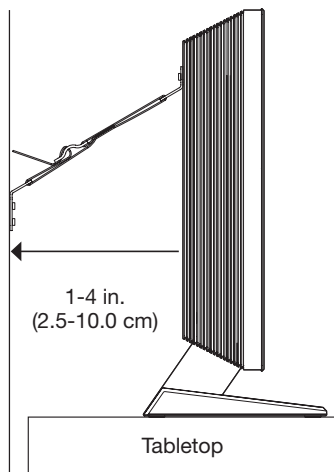
4. Hold the bracket on the end of each strap against the wall a minimum of 18 in. (46 cm) or maximum of 24 in. (61 cm) above the tabletop. In the center of each wall stud, mark the location of the two holes in the bracket.



5. Using a 7/64 in. (3 mm) drill bit (not included), drill 4 pilot holes.
6. Secure each bracket to the wall using 2 of the provided screws.

Physical Setup

7. Push the monitor back to within 1–4 in. (2.5–10 cm) from the wall.



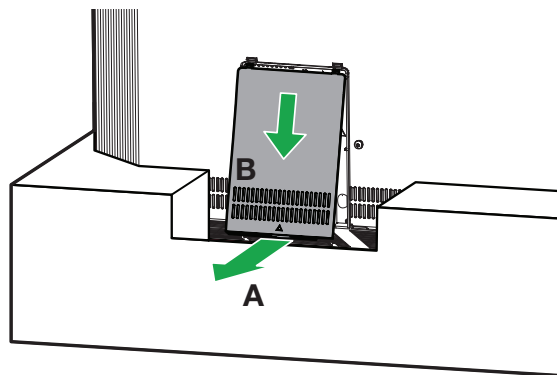
8. Tighten the straps to remove any slack between the monitor and the wall.
9. Bundle the remaining length of the straps and secure them out of reach behind the monitor.

Wall-mounting the monitor

The VideoWave® III entertainment system is compatible with any VESA certified bracket that uses a 400 mm x 400 mm screw pattern. The mount must be able to support the weight of the monitor. The 46 in. monitor weighs 120 lbs. (54 kg). The 55 in. monitor weighs 135 lbs. (61 kg).

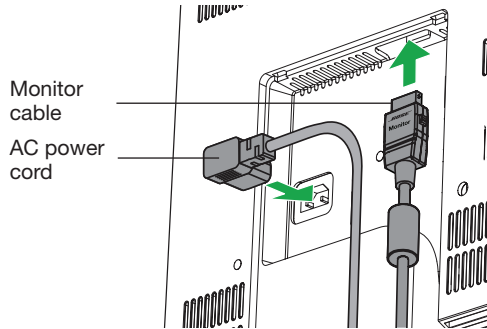
Articulating wall mounts are not recommended, because the changes in position may affect the acoustics. If the VideoWave system is mounted over a fireplace, it must be placed over a mantle that is a minimum of 6 in. (15.3 cm) deep to protect the system from overheating.

1. On the rear panel of the monitor, firmly pull out on the bottom of the connector cover (A), and pull down (B) to remove it.



2. Attach the monitor cable and AC power cord to the monitor as shown.

You do not need to re-attach the connector cover. Hiding the cables behind the monitor may be easier with the cover removed.



3. Attach the wall mounting brackets (not included) to the wall and monitor according to the instructions included with the wall brackets.

4. Lift the monitor out of its packing material.

WARNING: The 46 in. monitor weighs 120 lbs. (54 kg). The 55 in. monitor weighs 135 lbs. (61 kg). To prevent personal injury, a two-person lift is required.

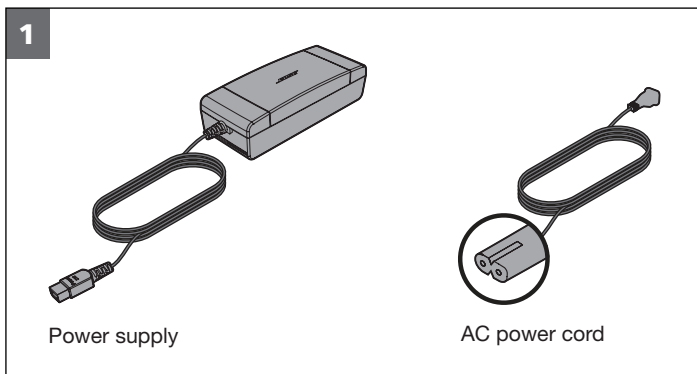
5. Attach the monitor to the wall according to the instructions included with the wall brackets.

Note: If using an AC (mains) outlet that is on the wall behind the monitor, plug in the power cord before hanging the monitor.

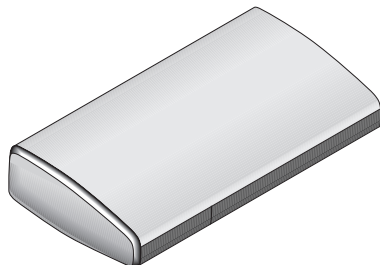
Physical Setup

Control console placement and connections

Here is what you need from Box 1:



You also need the control console:

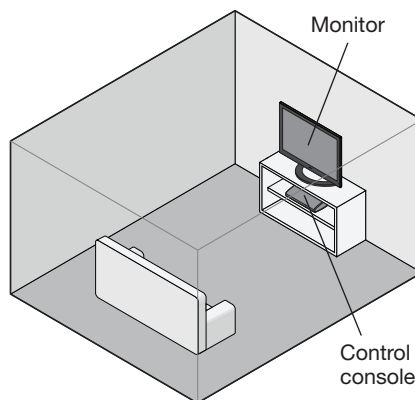


Control console

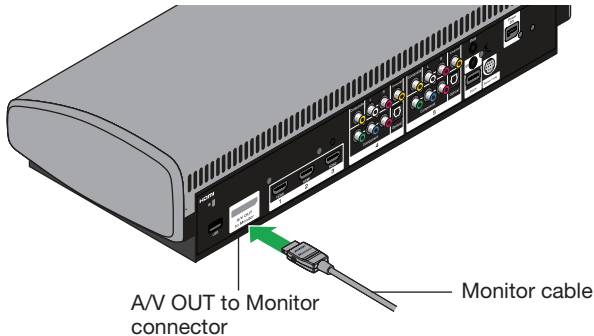
To place and connect the control console:

1. Place the control console on a flat, stable surface near the monitor.
 - Make sure the supplied monitor cable (3 m) can reach from the control console to the monitor.
 - Until your system setup is complete and your external devices are connected, keep the control console positioned for easy access to its rear connection panel.

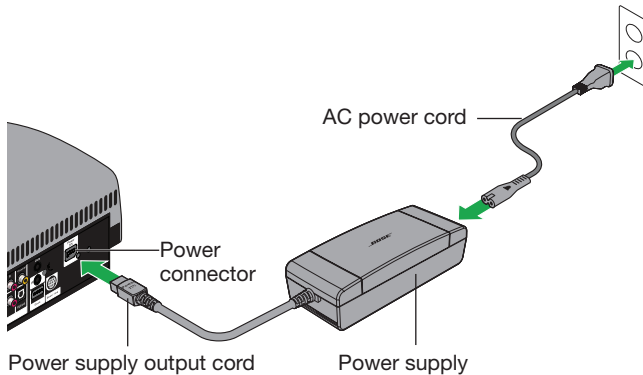
CAUTION: If using the monitor on the stand, do not place the control console between the legs of the stand or anywhere directly under the bottom edge of the monitor. This avoids blocking ventilation and audio system openings in the product enclosure.



2. Plug the free end of the monitor cable into the **A/V OUT to Monitor** connector on the rear panel of the control console.



3. Plug the power supply output cord into the **Power** connector on the control console.



4. Plug the AC power cord into the power supply. Fully insert the plug in as far as it can go.
5. Plug the other end of the power cord into a live AC (mains) power outlet.
6. To begin the interactive setup phase, go to “Starting the system” on page 16 and follow the instructions.

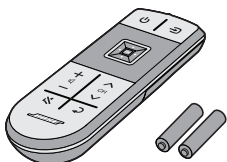
Interactive Setup

Starting the system

You are now ready to turn on your system and complete the set up process using the Unify® intelligent integration system.

Here is what you need from Box 2:

2



Bose® click pad remote control with batteries



ADAPTiQ® audio calibration headset

Box 2 additional included items:

Use these items to connect audio/video devices to your system. When it is time to connect devices, the Unify® system will guide you in choosing the right cable. The USB flash drive can be used to update the system software. (See the operator's guide for more information on software updates.)

2



HDMI™ cable (2)



Component video cable



Stereo audio cable



Composite video cable




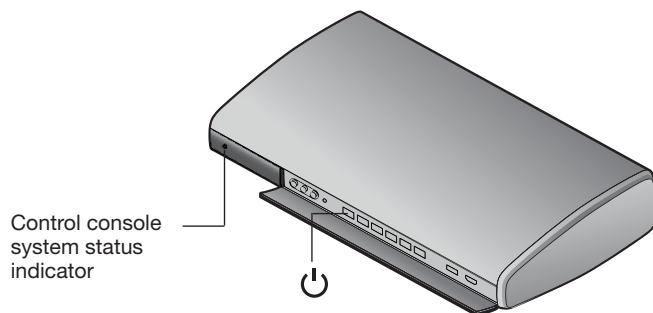
IR emitter cable



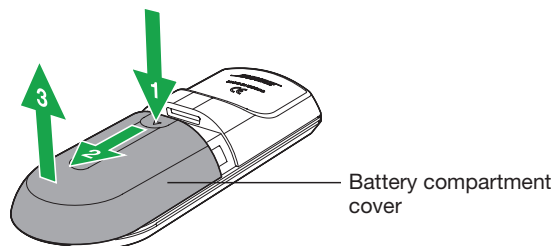
USB flash drive

To start the VideoWave III® entertainment system:

1. Press the Power button  on the front of the control console. The control console system status indicator displays the startup status.

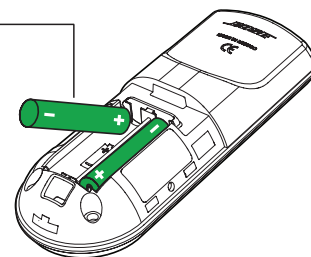


2. Slide the battery compartment cover off the back of the remote control.



3. Install the batteries (included), matching the polarity markings (+ and -) to the markings inside the battery compartment.

AAA (IEC LR3)
batteries (2)



4. Slide the battery cover back into place.

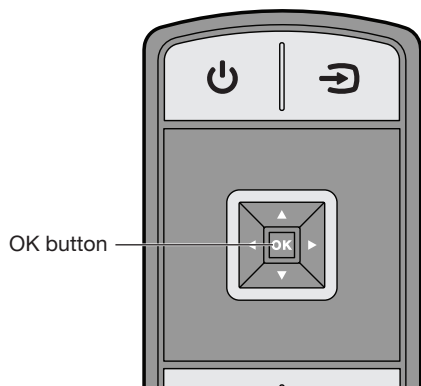
Control console system status indicator	Status
Off	The system is not connected to power, or operating in power saving mode.
Blinking green	Starting up.
Solid green	On and ready to use.
Orange	Shutting down, or off and charging iPod or iPhone dock (dock available for purchase from Bose).

Note: When the system starts up, the monitor emits a start-up tone and displays the Bose logo with a progress bar.

Interactive Setup

5. When the system is started up for the first time the following instruction appears on the monitor:

“Press and hold the OK button on the Bose remote control until the screen turns black.”



Be sure to perform this step exactly as it appears on your monitor. It ensures that the remote can communicate with the control console.

6. Follow the onscreen instructions to complete your system setup.

The Unify® intelligent integration system guides you through the remaining setup steps to:

- Select your language.
- Run the ADAPTiQ® audio calibration system.
- Connect and setup audio/video devices.

If you have setup problems

If you experience setup problems, the Unify® intelligent integration system can help you identify the issue. You can return to the Unify® setup process at any time. Press the Setup button on the control console to activate the Unify® system menu. See “Changing Your System Setup” in the *VideoWave® III entertainment system Operating Guide*. For help in trying to resolve any problems, see the troubleshooting table in the operating guide.

Contacting customer service

For additional assistance, contact Bose Customer Service. See the included contact list.



370619-0010

BOSE[®]
Better sound through research[®]

©2013 Bose[®] Corporation, The Mountain,
Framingham, MA 01701-9168 USA
AM370619 Rev. 00