

BOSE[®]



Bose[®] SoundTrue[™]

in-ear headphones

for use with Samsung Galaxy devices

Owner's Guide

Important Safety Information

Please read this owner's guide carefully and keep for future reference.



WARNINGS:

- **DON'T** use the headphones at a high volume for a long period of time.
 - To avoid hearing damage, use your headphones at a comfortable, moderate volume level.
 - Turn the volume down on your device before placing the headphones in your ears, then turn the volume up gradually until you reach a comfortable listening level.
- **DO** use caution and follow applicable laws regarding mobile phone and headphone use if using the headphones for phone calls while driving. Some jurisdictions impose specific limitations, such as single earpiece configuration, on the use of such products while driving. **DON'T** use the headphones for any other purpose while driving.
- **DO** focus on your safety and that of others if you use the headphones while engaging in any activity requiring your attention, e.g., while riding a bicycle or walking in or near traffic, a construction site or railroad, etc. Remove the headphones or adjust your volume to ensure you can hear surrounding sounds, including alarms and warning signals.
- **DON'T** use mobile phone adapters to connect headphones to airplane seat jacks, as this could result in personal injury such as burns or property damage due to overheating.
- **DO** remove headphones and disconnect immediately if you experience a warming sensation or loss of audio.
- **DON'T** submerge or expose for extended period to water, or wear while participating in water sports, i.e. swimming, waterskiing, surfing, etc.
- **DON'T** let the headphones or accessories get wet. Exposure to moisture may increase the risk of fire or electric shock.
- **DON'T** place naked flame sources, such as lighted candles, on or near the product.



WARNING:

Contains small parts which may be a choking hazard. Not suitable for children under age 3.



WARNING:

This product contains magnetic material. Contact your physician if you have questions on whether this might affect the operation of your implantable medical device.



This symbol means the product must not be discarded as household waste, and should be delivered to an appropriate collection facility for recycling. Proper disposal and recycling helps protect natural resources, human health and the environment. For more information on disposal and recycling of this product, contact your local municipality, disposal service, or the shop where you bought this product.




This product conforms to all applicable EU directive requirements. The complete declaration of conformity can be found at www.Bose.com/compliance

Names and Contents of Toxic or Hazardous Substances or Elements						
	Toxic or Hazardous Substances and Elements					
Part Name	Lead (Pb)	Mercury (Hg)	Cadmium (Cd)	Hexavalent (CR(VI))	Polybrominated Biphenyl (PBB)	Polybrominated diphenylether (PBDE)
Metal parts	X	0	0	0	0	0
Plastic parts	0	0	0	0	0	0
Speakers	X	0	0	0	0	0
Cables	X	0	0	0	0	0

O: Indicates that this toxic or hazardous substance contained in all of the homogeneous materials for this part is below the limit requirement in SJ/T 11363-2006.

X: Indicates that this toxic or hazardous substance contained in at least one of the homogeneous materials used for this part is above the limit requirement in SJ/T 11363-2006.



Samsung Galaxy is a trademark of Samsung Electronics Co., Ltd.

©2014 Bose Corporation. No part of this work may be reproduced, modified, distributed, or otherwise used without prior written permission.

About your Bose® SoundTrue™ in-ear headphones	4
System Features.....	4
Unpacking the system.....	5
Connecting to your Samsung Galaxy device	6
Using the headphones with your Samsung Galaxy device.....	6
Headphone controls	6
Basic functions	7
Media playback functions	7
Importance of proper fit	8
Fitting the headphones to your ear	8
Changing the ear tips	9
Adjusting for comfort and stability.....	10
Using the adjustment slider	10
Using the clothing clip	10
Using a single earpiece.....	10
Troubleshooting	11
Cleaning.....	12
Limited warranty	12

Please complete and retain for your records:

The serial and model number can be found on the original shipping carton and on the warranty card.

Serial number _____

Model number _____

Purchase date _____

We suggest you keep your receipt with this owner's guide.

Using the headphones

About your Bose® SoundTrue™ in-ear headphones

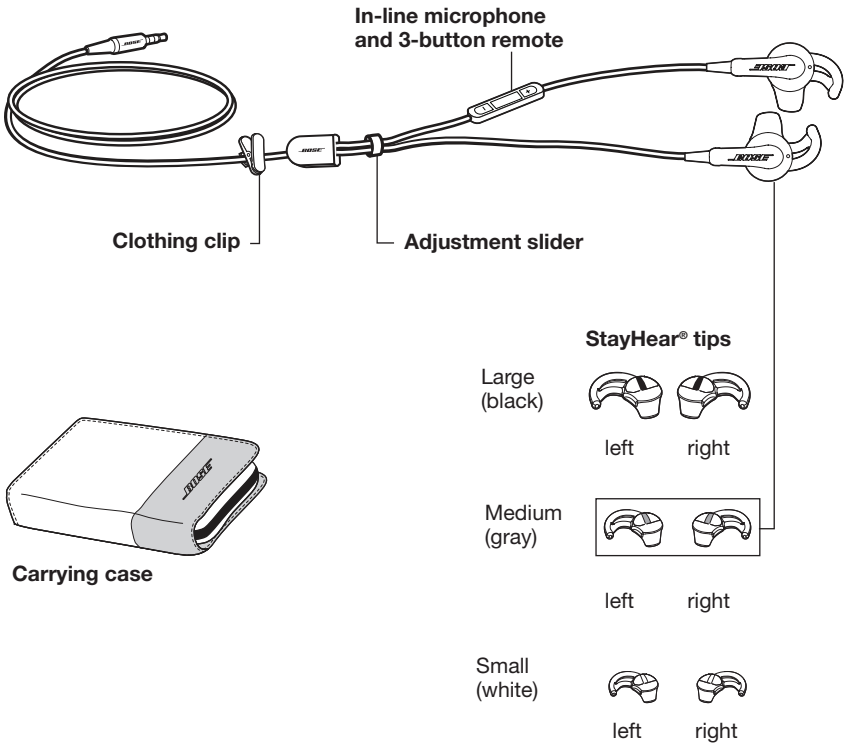
The Bose® SoundTrue™ in-ear headphones offer a combination of lifelike audio performance and comfortable fit not available from most conventional headphones.

System Features

- Enjoy your music with deep, clear sound.
- Exclusive TriPort® technology delivers natural-sounding lows, even at high volumes.
- Inline microphone and remote for easy switching between calls and music with your Samsung Galaxy device.
- StayHear® tips keep your headphones comfortably in place.
- Engineered and tested for lasting quality and durability.
- Carrying case stores and protects headphones.

Unpacking the system

Carefully unpack the carton and confirm that the following parts are included:

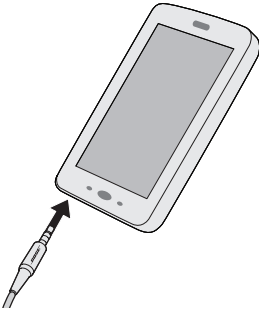


Note: The headphones come with medium (gray) StayHear® tips attached.

Using the headphones

Connecting to your Samsung Galaxy device

Connect the headphones to the standard 3.5 mm headphone connector on your device.

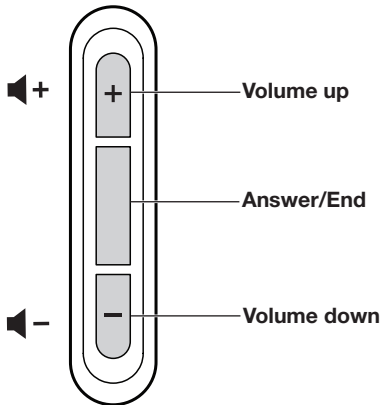


Using the headphones with your Samsung Galaxy device

The Bose® SoundTrue™ in-ear headphones come with an inline microphone and 3-button remote.

Note: The **S** marking on the back of the remote indicates that these Bose® SoundTrue™ in-ear headphones are designed for use with Samsung Galaxy devices. Full controls may not be available for some models. Refer to your Samsung Galaxy user guide to see if remotes work with your model.

Headphone controls



Basic functions

Increase volume	Press and release the + button.
Decrease volume	Press and release the – button.
Answer a call	When you receive an incoming call, press and release the Answer/End button to answer.
End a call	Press and release the Answer/End button.
Decline an incoming call	Press and hold the Answer/End button for about two seconds, then release.
Switch to an incoming or on-hold call and put the current call on-hold	While on a call, press and release the Answer/End button once. Press and release again to switch back to the first call.
Switch to an incoming or on-hold call and end the current call	While on a call, press and hold the Answer/End button for about two seconds, then release.
Use voice control	Press and hold the Answer/End button. For more information on voice control, refer to your Samsung Galaxy device Owner's Guide.

Media playback functions

Play or pause a song or video	Press and release the Answer/End button.
Skip to the next song or chapter	Press and release the Answer/End button twice quickly.
Fast forward	Press and release the Answer/End button twice quickly and hold the second press.

Using the headphones

Importance of proper fit

When you wear the headphones properly, they provide the comfort and clarity you expect from Bose.

Fitting the headphones to your ear

The headphone earpiece has a soft StayHear® tip attached, allowing it to rest comfortably in the bowl of your ear. The wing part of the tip fits just under your ear ridge.

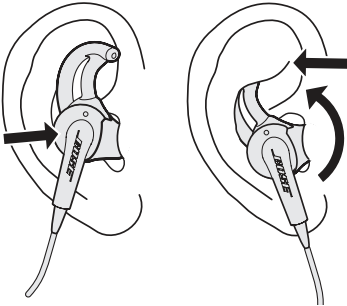
Note: Each StayHear® tip is marked with an **L** (Left) or an **R** (Right) to indicate which earpiece it is designed to fit. Be sure to attach the Left tip to the Left earpiece and the Right tip to the Right earpiece.



To determine if the tip is the right size:

1. Insert the earpiece into the canal just enough for the headphone to rest lightly against your ear.
2. Tilt the headphone back and press the tip wing under the ear ridge until it is secure.

The tips should fit comfortably yet securely in the bowl of the ear.



Changing the ear tips

Select the type and size of eartip that provides you with the best comfort and fit.

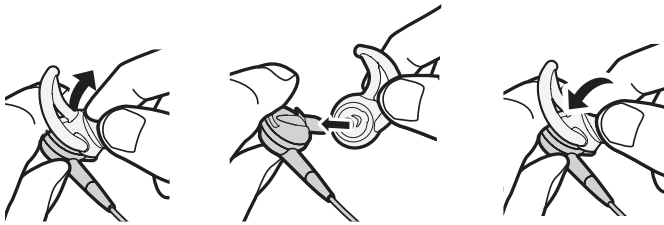
1. Gently peel the edges of the attached tip away from the earpiece, using care not to tear the tip.

Caution: To prevent damage, do not pull on the StayHear® tip wing.

2. Position the opening of the new tip over the nozzle and the small slot over the nozzle hook.

Note: Each tip is marked with a either an **L** or an **R** to indicate which earpiece it is for. Be sure to attach the left StayHear® tip to the left earpiece and the right StayHear® tip to the right earpiece.

3. Ease the base of the tip down around the base of the earpiece until the tip feels secured.



Using the headphones

Adjusting for comfort and stability

There are several ways you can adjust your headphones to provide additional comfort and stability. You can customize how you wear your headphones using the adjustment slider and clothing clip.

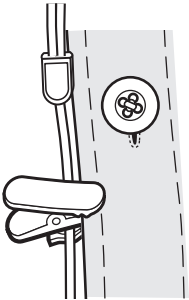
Using the adjustment slider

Move the adjustment slider up or down to reduce or increase the amount of loose cord between the left and right earpiece. Finding the right position for the slider can help optimize the placement of the inline microphone and remote.



Using the clothing clip

Use the clothing clip to fasten the cable to your clothing, for convenience, stability, and to help manage the cable. This can be helpful during high-movement activities or when using the headphones in a single earpiece configuration.



Using a single earpiece

The Bose® SoundTrue™ in-ear headphones can be used with only the right (R) earpiece in your ear. This allows you to take calls and still hear surrounding sounds.

Troubleshooting

If you experience any trouble using your headphones, try the following troubleshooting instructions.

Problem	What to do
No audio/intermittent	<ul style="list-style-type: none">• Make sure the headphone cable is securely connected to the 3.5 mm headphone connector on the device.• Try another audio device.
Excessive bass	<ul style="list-style-type: none">• Turn off any audio enhancement features on the audio source.
Microphone is not picking up sound	<ul style="list-style-type: none">• Make sure the headphone cable is securely connected to the 3.5 mm headphone connector on the device.• Make sure the microphone is not being blocked or covered.• Try another phone call.• Try another compatible Samsung Galaxy device.
Phone not responding to remote (button) presses	<ul style="list-style-type: none">• Make sure the headphone cable is securely connected to the 3.5 mm headphone connector on the device.• For multi-press functions: Vary speed of presses.• Try another compatible Samsung Galaxy device.
Ear tips falling off	<ul style="list-style-type: none">• Securely attach the ear tips to the earpiece and nozzle hook.
Lost ear tip	<ul style="list-style-type: none">• Contact Bose® for replacement tips.
Sound is muffled from earpiece	<ul style="list-style-type: none">• Clear any debris or wax build-up from the ear tips and headphones nozzles.• Make sure the headphone cable is securely connected to the 3.5 mm headphone connector on the device.• Try another compatible Samsung Galaxy device.

Using the headphones

Cleaning

Your headphones may require periodic cleaning:

Ear tips: Remove the ear tips from the headphones. Wash them with a mild detergent and water. Make sure you thoroughly rinse and dry them before putting them back on the headphones.

Headphones' nozzles: Clean only with a dry, soft cotton swab or equivalent. Never insert any cleaning tool into the nozzle.

Limited warranty

The Bose® SoundTrue™ in-ear headphones are covered by a limited warranty. Details of the limited warranty are provided on the product registration card that is included in the carton. Please refer to the card for instructions on how to register. Failure to register will not affect your limited warranty rights.

The warranty information provided with this product does not apply in Australia and New Zealand. See our website at www.bose.com.au/warranty or www.bose.co.nz/warranty for details of the Australia and New Zealand warranty.



721141-0010

BOSE[®]
Better sound through research[®]

©2014 Bose Corporation, The Mountain,
Framingham, MA 01701-9168 USA
AM721141 Rev. 00