

ControlSpace® EP22-D 2-in/2-out Dante™ Endpoint

BOSE

TECHNICAL DATA SHEET

Product Description

The Bose® ControlSpace® EP22-D Dante endpoint is a convenient and cost-effective way to add 2-in/2-out analog audio channels to a Dante-based networked audio system. The small form factor of the EP22-D with PoE power capability makes it easy to locate the endpoint close to analog devices, helping to reduce costly and interference-prone analog wiring.

Key Features

- Small form factor, can be unobtrusively located near analog devices
- Integrated discovery, routing, configuration and control using ControlSpace Designer™ software
- Dual power options (DC or PoE) means the EP22-D will work with either standard or PoE Ethernet switches
- Three input gain settings for common line and microphone sources. Channel gain is individually adjustable via ControlSpace Designer software
- +24VDC Phantom power
- Separate analog output gains to accommodate both consumer and professional line-level requirements

Technical Specifications

Audio Inputs	
Input Channels	Two (2) analog, balanced microphone/line level
Connectors	Two (2) 3.81 mm Euroblock, 3-pin
Phantom Power	+24VDC, software selectable per input
Gain Settings	0 / +25 / +40 dB, software selectable
Input Impedance	> 1.8 kΩ at any gain setting
Equivalent Input Noise	-115 dBu (at +40 dB gain)
Maximum Input Level	+12 dBu (at 0 dB gain)
Audio Outputs	
Output Channels	Two (2) analog, balanced line-level, with automatic muting on loss of Dante signal
Connectors	Two (2) 3.81 mm Euroblock, 3-pin
Output Gain	0 / +10 dB, software selectable
Output Noise	< -90 dBu @ 0 dB gain
Maximum Output Level	+12 dBu
Output Impedance	200 ohms (100 ohms unbalanced)
Software Application	
ControlSpace® Designer™ software v4.2 or later	
General	
Digital Conversion	48 kHz / 24-bit
System THD	< 0.01 % (at any gain, input signal 3 dB below maximum)
PoE Class	Class 0 802.3af PoE PD compliant
Certifications	FCC Part 15 Class A, CE (EN 55022 Class A)
Dimensions	1.06" H x 6.45" W x 3.45" D (27 mm x 164 mm x 88 mm)
Operating Temperature	32 °F – 104 °F (0 °C – 40 °C)
Product Code	738675-0010



Applications

- Hotel ballrooms
- Conference/meeting centers
- Conference rooms
- Sports facilities
- Convention centers
- Religious and worship facilities
- Retrofit applications using existing networking cable

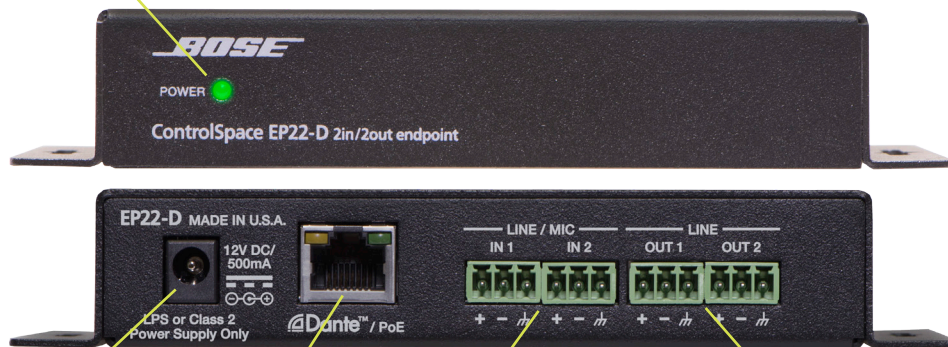
ControlSpace® EP22-D 2-in/2-out Dante™ Endpoint

BOSE

TECHNICAL DATA SHEET

Connector Panel

POWER/ID indicator: Indicates power when on and blinks when the *Identify* button is pressed in ControlSpace Designer™ software



12VDC input: +12VDC @ 500mA, center-positive polarity (External supply not required if used with a PoE Ethernet switch)

Dante™ / PoE network connector: 100 Mbps Dante Ethernet RJ-45 network connection

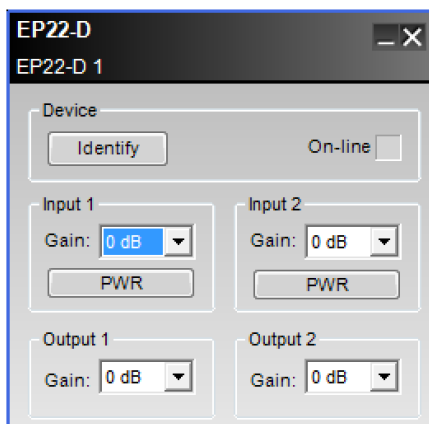
Line/Mic inputs (2):

- Balanced mic/line inputs
- +24V Phantom Power (individually software switchable per channel)
- Available gains of 0 / 25 / 40 dB (individually software selectable per channel)

Line outputs (2):

- Low impedance analog outputs – 200 ohms balanced, 100 ohms unbalanced
- Available gains of 0dB and +10dB (individually software selectable per channel)

ControlSpace Designer™ software interface



Dante™ is a trademark of Audinate Pty Ltd.