

Bose® ControlSpace® ESP-00 4-Ch mic/line input card II

Installation Guide

CAUTIONS:

- This product is intended for installation by professional installers only.
- Do not make unauthorized alterations to the product; doing so may compromise safety, regulatory compliance, system performance, and may void the warranty.
- Electro-Static Discharge (ESD) sensitive device. Handle with care.

NOTE: The ESP-00 4-Ch mic/line input card II is compatible with ESP-00 series II, ESP-00, and ESP-88 engineered sound processors.

This document is intended to provide professional installers with basic installation and safety guidelines for installing the optional ESP-00 4-Ch mic/line input card II into a Bose® ESP-00 II engineered sound processor. Please read this document before attempting installation.

The 4-Ch mic/line input card II provides four mic/line input channels with optional phantom power and selectable mic pre-amp gain settings from 0 to 64 dB.

NOTE: Processors with product code 370610-x120 are capable of providing optional +48 VDC phantom power to each input channel. Card-frame processors with other product codes provide +15 VDC to each input channel.

To install the 4-Ch mic/line input card II:

1. Turn off and unplug the ESP.
2. Detach the top cover by removing the 8 cover screws.
3. From an empty expansion slot, remove the two screws from the blank bracket and lift the bracket off the chassis. Save the two screws for mounting the new expansion card.
4. Align the four front-facing LEDs of the expansion card with the holes in the front of the chassis, and ensure the connector on the bottom of the card is aligned with the connector on the motherboard (Figure 1). Use the black card guide on the bottom of the case to direct the card using the grooves.

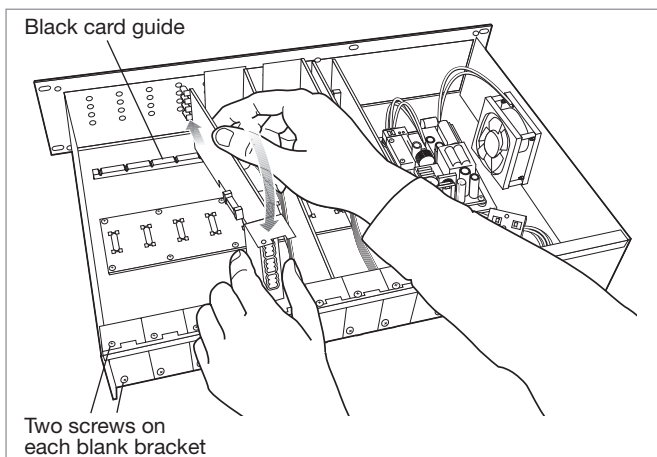


Figure 1. Aligning card with connector

5. When the connector on the card is aligned above the connector on the motherboard, press gently to mate the connectors (Figure 2).

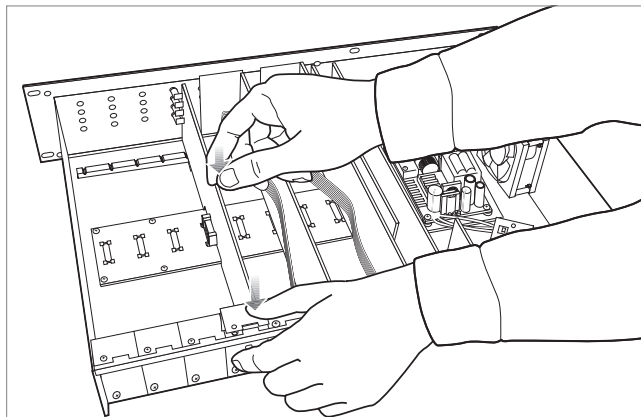


Figure 2. Mating card with connector

6. Secure the card in the slot by installing the two screws removed from the blank bracket in Step 3.
7. Reattach the top cover and fasten the 8 screws.
8. Plug in the processor and turn it on.
9. To verify that the card was inserted correctly, use ControlSpace® Designer™ software (version 4.1 or newer):
 - A. Click **Scan** and confirm that the software detects the processor.
 - B. Right-click the detected processor and display its properties (Figure 3). If the 4-Ch mic/line input card II was installed correctly, it will appear in the correct slot position.

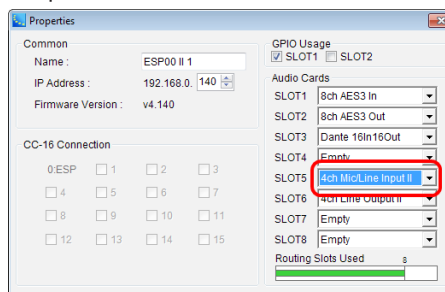


Figure 3. ESP-00 II Properties panel

10. If the card does not appear, repeat steps 1-9. Be sure that the card is seated correctly.
11. For further information on configuring the ESP-00 4-Ch mic/line input card II, please refer to ControlSpace Designer Software Help.

©2014 Bose Corporation. All rights reserved. All trademarks are the property of their respective owners.

BOSE
Better sound through research®



726358-0010

©2014 Bose Corporation, The Mountain,
Framingham, MA 01701-9168 USA
AM 726358 Rev. 00
www.pro.Bose.com