

Updating the Bose Loudspeaker Equalization Database

The Bose loudspeaker EQ database can be updated for ControlSpace Designer software newer than version 2.075. With the introduction of ControlSpace Designer 3.0 a new Bose loudspeaker EQ format was introduced to support the RoomMatch™ Array Module loudspeakers. This document covers the necessary steps to update the Bose loudspeaker equalization database.

DETERMINING THE CURRENT LOUDSPEAKER EQ DATABASE VERSION

1. From within the ControlSpace Designer application, version 2.075 or greater, select About ControlSpace Designer... from the Help menu.
2. The current loudspeaker database version is shown with the application version at the bottom of the 'About' pane.

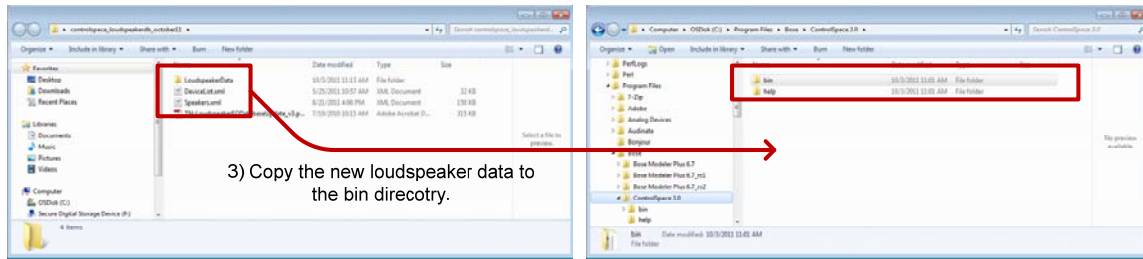


UPDATING THE LOUDSPEAKER EQ DATABASE

1. Download the latest version of the Bose loudspeaker equalization database for ControlSpace Designer software. This most recent database version is always available for download at <http://pro.bose.com>.
2. Once the loudspeaker EQ database is downloaded you will need to transfer the new Speakers.xml, DeviceList.xml and Loudspeaker Data directory to the ControlSpace designer application folder on your PC.
3. Locate the current ControlSpace Designer application directory. This is typically c://Program Files/Bose/ControlSpace Designer.
4. Open the bin directory within the ControlSpace Designer application folder.
5. Rename the existing Speakers.xml file OldSpeakers.xml and DeviceList.xml to OldDeviceList.xml, and Loudspeaker Data directory to Old Loudspeaker Data.
6. Transfer the new Speakers.xml and DeviceList.xml files, and the Loudspeaker Data directory to the bin directory.

2) Locate and open the folder containing the new Bose loudspeaker EQ data

1) Locate and open the **bin** directory within the ControlSpace Designer application folder



7. Once the files have been copied the new Bose loudspeaker EQs will be available within the ControlSpace Designer software once the application has been restarted.

ADDITIONAL NOTES

1. This method of updating the loudspeaker equalization database is used primarily to support the introduction of new loudspeaker products. However, in some cases a new loudspeaker equalization curve may be provided for an existing loudspeaker product. In cases where a new EQ is provided for an existing product it may be necessary to upgrade an existing installation or design to ensure compatibility with the latest equalization version.
2. It should be noted that any custom devices that have been added to ControlSpace Designer will be lost on transferring the new DeviceList.xml file. You will need to manually copy any custom devices from the OldDeviceList.xml into the new DeviceList.xml file.