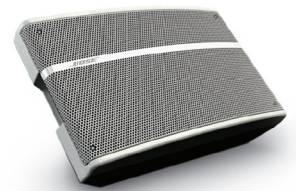


## Panaray® 620M Multi-Position Floor Array



Compact. Added flexibility.  
Bose® performance.

The Bose® Panaray® 620M multi-position floor array delivers high SPL and versatile coverage options. It features two 5.25" (133mm) drivers in a multi-position cabinet with six 2.25" (57mm) drivers in a proprietary Articulated Array® loudspeaker design. This innovative combination of cabinet shape and unique Bose technology allows the Panaray 620M multi-position floor array to be used in three different positions for almost any type of floor array application:

- > Individual mix
- > Group mix – deep stage
- > Group mix – shallow stage

Using exclusive Bose driver technology, the Panaray 620M multi-position floor array is an effective solution for new or existing systems in houses of worship, auditoriums, performing arts facilities and municipal multipurpose spaces. It is designed for small- to medium-sized stage applications such as:

- > School performances
- > Orchestra pits
- > Live music events

### The features you need for the performance you want.

- > Compact and lightweight, with a durable, sleek design.
- > Proprietary Articulated Array loudspeaker design, in combination with a multi-position cabinet, allows the Panaray 620M multi-position floor array to deliver the proper mix to onstage performers.
- > Bass extension to 70 Hz to meet the demands of most array applications.
- > Recessed rear NL4 connectors aid cable concealment.
- > Integrated rubber cabinet boot helps reduce unwanted array movement.
- > Backed by a transferable five-year limited warranty.

**Bose Professional Systems Division**

Design | Performance | Support

**BOSE®**

## Specifications

**Driver complement:**

Two 5.25" (133mm) drivers  
Six 2.25" (57mm) drivers

**Maximum acoustic output  
(ground plane measurements):**

113 dB-SPL @ 1m  
119 dB-SPL (peak) @ 1m

**Impedance:**

8Ω

**Long-term power handling:**

200W

**Sensitivity (pink noise):**

90 dB-SPL, 1W @ 1m

**Frequency range (±3 dB):**

70 Hz to 16 kHz

**Beamwidth:**

45° Individual position: 40° horizontal, 120° vertical  
60° Group – far position: 120° horizontal, 40° vertical  
40° Group – near position: 120° horizontal, 40° vertical

**Connectors:**

2 x NL4 connectors

**Color:**

Black or white

**Dimensions:**

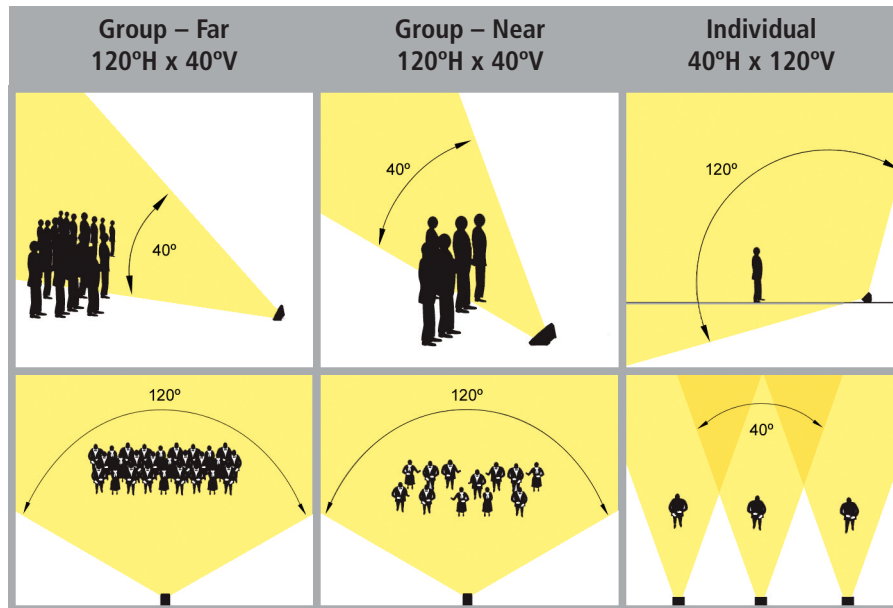
10.5"D x 12.5"W x 20.5"H  
(266mm x 318mm x 522mm)

**Weight:**

Product: 22lb (10kg)  
Shipping: 28lb (13kg)

**Innovative 3-in-1 design**

Delivers different coverage patterns for different applications.



Use for large groups on a deep stage: school chorus, stage play or choir.

Use for small groups on a shallow stage: musical duo or quartet, small choir or stage production.

Use for individual mixes or stationary performers.

**For more information:**

[pro.bose.com](http://pro.bose.com)

**BOSE**  
Better sound through research®

All information subject to change without notice.

©2007 Bose Corporation.

Bose, Panaray and Articulated Array are registered trademarks of Bose Corporation.  
CCM-004518 PC044296