

Bose® RoomMatch™ RMPINS Quick Release Pin Kit Accessory



CAUTION: This product is intended for installation by professional installers only!

Thank you for selecting Bose® RoomMatch™ loudspeakers for your sound reinforcement system. This document is intended to provide professional installers with basic installation and safety guidelines for using the optional RMPINS kit with Bose RoomMatch™ loudspeakers. Please read this document before attempting installation.

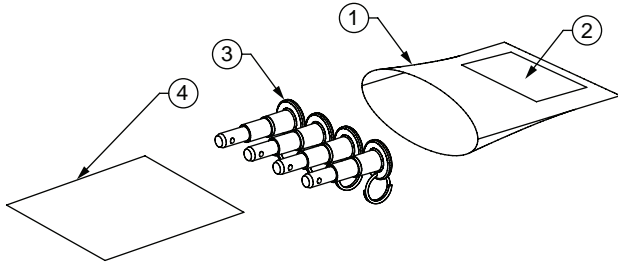


CAUTION: Make no modification to the system or accessories. Unauthorized alterations may compromise safety, regulatory compliance, and system performance.



CAUTION: This accessory is intended to work only with Bose RoomMatch™ Array Module loudspeakers.

Figure 1. RMPINS Quick Release Pin Kit Contents



1. Padded Poly Bag
2. Accessory Label
3. Quick Release Pins (4)
4. Installation and Safety Guidelines

To install the RMPINS kit with any RoomMatch™ Array Module or Subwoofer Module loudspeaker, follow these instructions:

1. Attach loudspeaker module to array frame or another loudspeaker according to its installation guide.
2. Align bolt holes. (Note: it may be helpful to use an alignment punch tool in rear holes.)
3. Depress push button of quick-release pins and insert through front holes.
4. Release push button and verify front pins are fully seated and locked in place.
5. Depress button of remaining quick-release pins and insert through rear holes.
6. Release push button and verify rear pins are fully seated and locked in place.

Figure 2. Attach Modules and Insert Pins

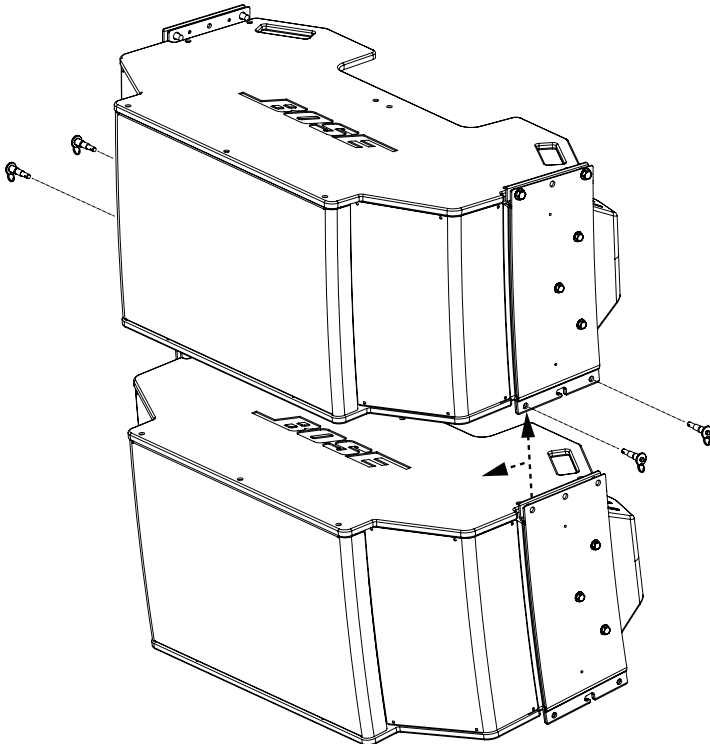
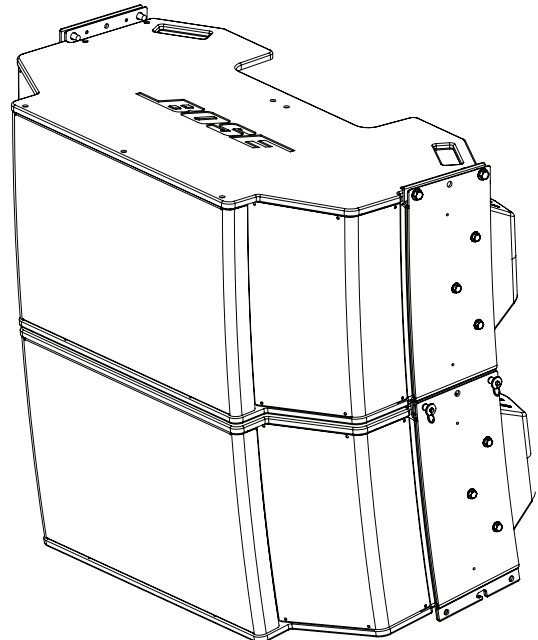
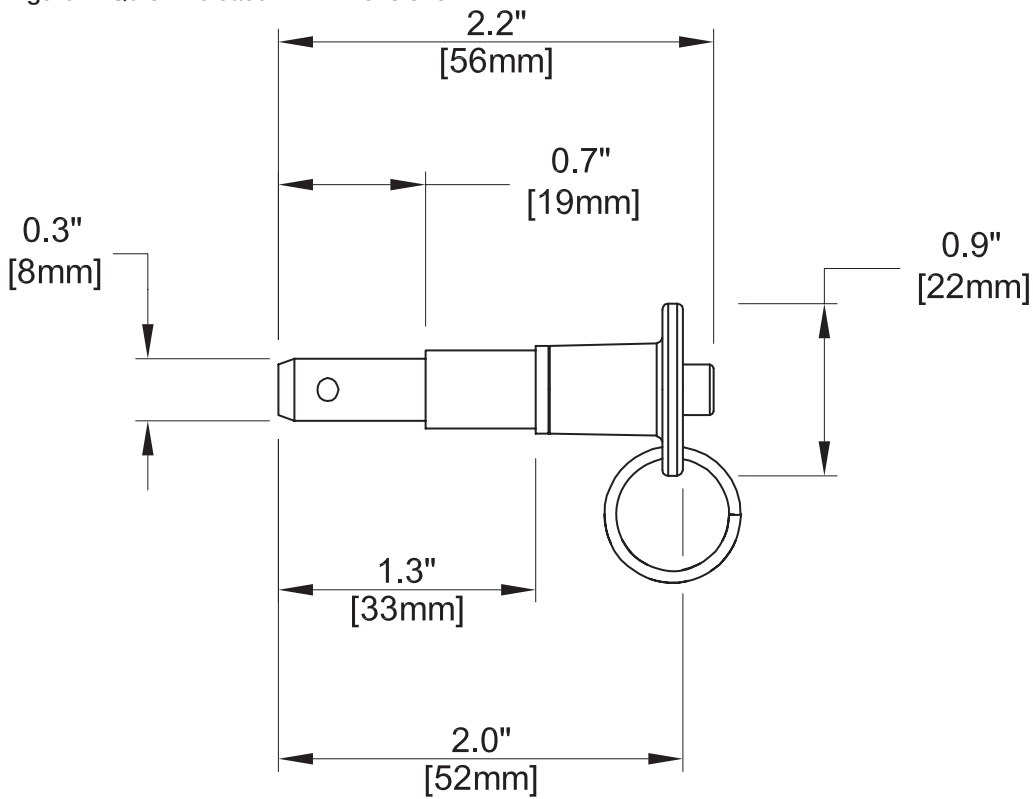


Figure 3. Assembled Modules



Bose® RoomMatch™ RMPINS Quick Release Pin Kit Accessory

Figure 4. Quick Release Pin Dimensions



BOSE®
Better sound through research®

© 2011 Bose Corporation. All rights reserved.
The Mountain, Framingham, MA 01701-9168 USA
www.pro.Bose.com
All trademarks are the property of their respective owners.
AM350102 Rev. 00