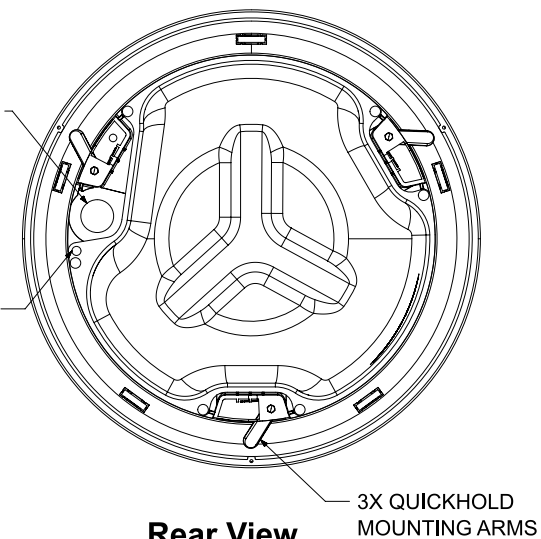


Right View
DIMENSIONS APPLY TO BOTH SIDES

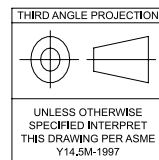
Ø 22 mm WIRE ENTRY
[.9] HOLE

SEISMIC MOUNTING
TAB



NOTES:

1. DIMENSIONS ARE IN MILLIMETERS OVER INCHES
2. WEIGHT APPROX 4.45kg [9.6bs] (SPEAKER ONLY)



NOTICE

© 2018 BOSE CORPORATION.
THIS DRAWING MAY NOT BE COPIED,
REPRODUCED, OR USED AS THE BASIS
FOR MANUFACTURE OR SALE OF
APPARATUS WITHOUT THE PRIOR
WRITTEN AUTHORIZATION OF
BOSE CORPORATION.

**DO NOT SCALE
DRAWING**

DESCRIPTION

DESIGNMAX DM5C LOUDSPEAKER

CAGE CODE

32108

DOCUMENT NUMBER

RF828786-MKTCADS

VERSION

00.9

BOSE