



# ToneMatch Updater

Software Guide

<b>Introduction</b>	<b>3</b>
System Requirements .....	3
Required Cabling .....	3
Downloading & Installing the ToneMatch Updater .....	3
Using .bos Files.....	4
Downloading .bos Files .....	4
Loading .bos Files onto Your ToneMatch Mixer.....	4
 <b>Using the ToneMatch Updater</b>	 <b>5</b>
DSP Firmware .....	5
Updating the DSP Firmware.....	5
Factory Presets .....	6
Updating Factory Presets.....	6
Preset Banks A, B & C.....	7
Updating Preset Banks .....	7
User Scenes .....	8
Backing Up User Scenes .....	8
Updating User Scenes.....	8
Shared Scenes .....	9
Backing Up Shared Scenes .....	9
Updating Shared Scenes.....	9

# Introduction

The Bose ToneMatch Updater Software allows you to enjoy the versatility of your ToneMatch mixer. The Bose ToneMatch Updater Software easily integrates with your PC allowing you to download new ToneMatch presets to your mixer, back up data, and share user-defined data.

## System Requirements

Windows 7 or higher; USB 1.1 or higher

macOS 10.5 or higher; USB 2.0 or higher

## Required Cabling

USB interface cable (not included)

**Note:** Please refer to your ToneMatch mixer owner's guide for instructions on how to connect your mixer to your computer.

## Downloading & Installing the ToneMatch Updater

1. Visit **bosepro.link/tmu**.
2. Click the link for the ToneMatch updater application for your operating system (Windows or macOS).
3. Click **OK** to download the ZIP file containing the application to your computer.
4. In the **Save As** window that appears, select the folder where you want to save the application. Make a note of the location.

**Note:** We recommend storing any .bos files you download in the same folder as the ToneMatch Updater application. We also recommend creating this folder in an easily accessible location (your Desktop or **My Documents**).

5. Click **Save** to download the application.
6. Open the folder where you downloaded the file, and extract (unzip) the ZIP file.
7. Open the extracted folder, locate the application (**.exe** on Windows or **.app** on macOS), and double-click the application to open it. (You may need to enter one or two subfolders to find the application.)
8. Follow the on-screen instructions in the ToneMatch Updater application to install it.

## Using .bos Files

The following types of files are **.bos** files, which work exclusively with your ToneMatch mixer:

- Firmware
- Presets
- Factory Scenes
- User Scenes
- Shared Scenes

To learn more about these, please refer to your ToneMatch mixer owner's guide.

## Downloading .bos Files

1. Visit **bosepro.link/tmu**.
2. Click a ToneMatch preset file, scene file, or firmware file to download it. Each file is a ZIP file containing the necessary .bos file(s).
3. Click **OK** to download the ZIP file containing the .bos file(s) to your computer.
4. In the **Save As** window that appears, select the folder where you want to save the .bos file(s). Make a note of the location.
5. Click **Save** to download the file.
6. Open the folder where you downloaded the file, and extract (unzip) the ZIP file.
7. Open the extracted folder, locate the .bos file(s). (You may need to enter one or two subfolders to find the application.)
8. Move the .bos file(s) into a folder of your choice.

**Note:** We recommend storing any .bos files you download in the same folder as the ToneMatch Updater application. We also recommend creating this folder in an easily accessible location (your Desktop or **My Documents**).

## Loading .bos Files onto Your ToneMatch Mixer

Once the .bos files are stored on your computer, continue reading this guide to learn more about interfacing with your ToneMatch mixer.

# Using the ToneMatch Updater

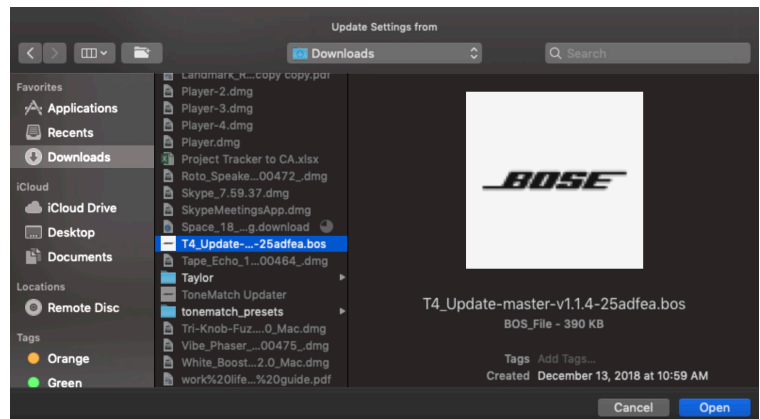


## DSP Firmware

The digital signal processor (DSP) firmware is the operating platform that determines overall functionality of the ToneMatch mixer's processor. When you open the ToneMatch Updater software, the version of the current DSP firmware on your mixer will be displayed next to an **Update** button.

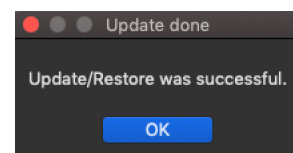
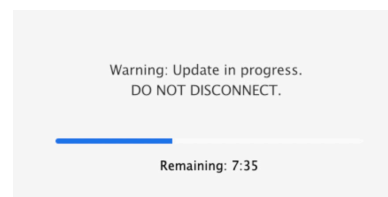
## Updating the DSP Firmware

1. Click **Update** in the same row as **T1/T4S/T8S Firmware**.
2. In the window that appears, locate the .bos file for your ToneMatch mixer firmware.
3. Double-click the DSP firmware .bos file (**T1/T4/T8\_Update-master...**).



The update process will begin. On your ToneMatch mixer's screen, a status bar will indicate the progress and **Updating Software Please Wait** will appear. The update will take approximately 10 minutes to complete.

A message will appear when the update is complete. Click **OK** to close the message. Your ToneMatch mixer will return to its previous state.



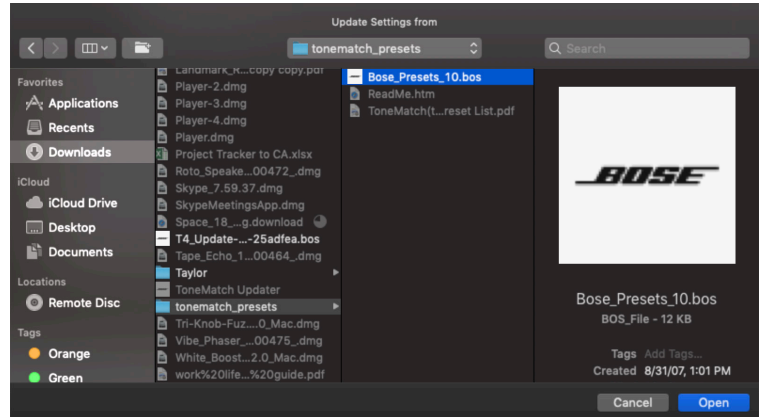
## Factory Presets

The factory presets are the library of default presets on your ToneMatch mixer. This is offered as a bundle and does not include ToneMatch A, B, and C banks. When you open the ToneMatch Updater, the version of the current factory preset on your mixer will be displayed next to an **Update** button.

**Note:** Updating will overwrite the existing version of the ToneMatch presets.

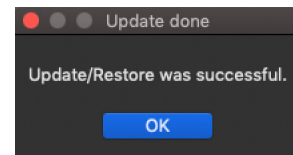
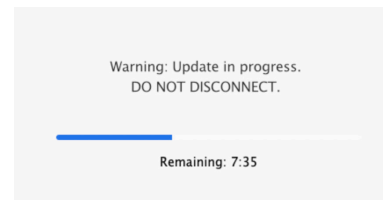
### Updating Factory Presets

1. Click **Update** in the same row as **ToneMatch Factory Presets**.
2. In the window that appears, locate the .bos file for your ToneMatch factory presets.
3. Double-click the ToneMatch presets .bos file (**Bose\_Presets...**).



The update process will begin. On your ToneMatch mixer's screen, a status bar will indicate the progress and **Updating Software Please Wait** will appear. The update will take approximately 10 minutes to complete.

A message will appear when the update is complete. Click **OK** to close the message. Your ToneMatch mixer will return to its previous state.



## Preset Banks A, B & C

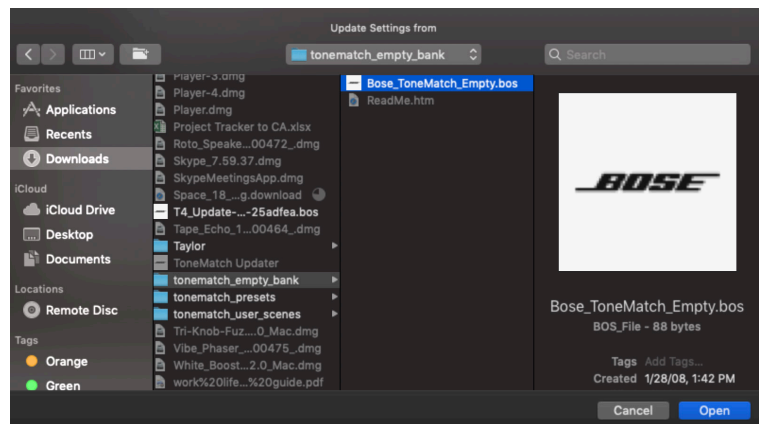
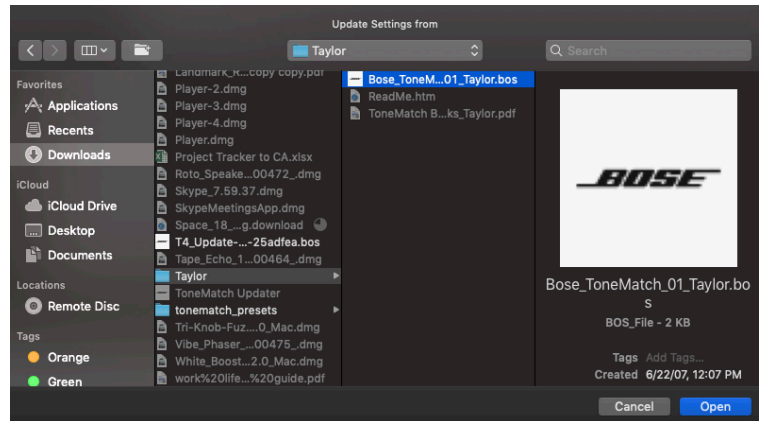
Preset Banks A, B, and C on your ToneMatch mixer allow you to download interchangeable groups of ToneMatch presets that have been optimized for the ToneMatch mixer. When you open the ToneMatch Updater, the version of the current preset in Banks A, B, and C on your mixer will be displayed next to their respective **Update** buttons.

**Note:** Updating will overwrite the existing preset version in ToneMatch Preset Bank A, B, or C.

## Updating Preset Banks

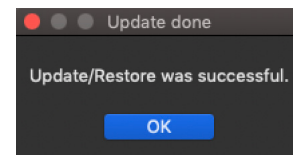
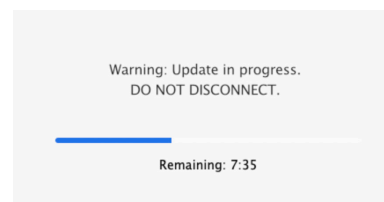
1. Click **Update** in the same row as **ToneMatch User Bank A, B, or C**.
2. In the window that appears, locate the .bos file for your preset bank.
3. Double-click the preset bank .bos file (**Bose\_ToneMatch...**).

**Note:** Each preset bank may be loaded with a group of specialized ToneMatch presets. To restore a preset bank to its default state, select the ToneMatch empty .bos file available at [bosepro.link/tmu](https://www.bosepro.link/tmu).



The update process will begin. On your ToneMatch mixer's screen, a status bar will indicate the progress and **Updating Software Please Wait** will appear. The update will take approximately 10 minutes to complete.

A message will appear when the update is complete. Click **OK** to close the message. Your ToneMatch mixer will return to its previous state.



## User Scenes

User scenes are a bank of 10 user-definable scenes for saving and recalling all your favorite settings. You can rewrite over these as many times as you want. When you open the ToneMatch Updater, the version of the current user scenes on your mixer will be displayed next to an **Update** and **Backup** button.

## Backing Up User Scenes

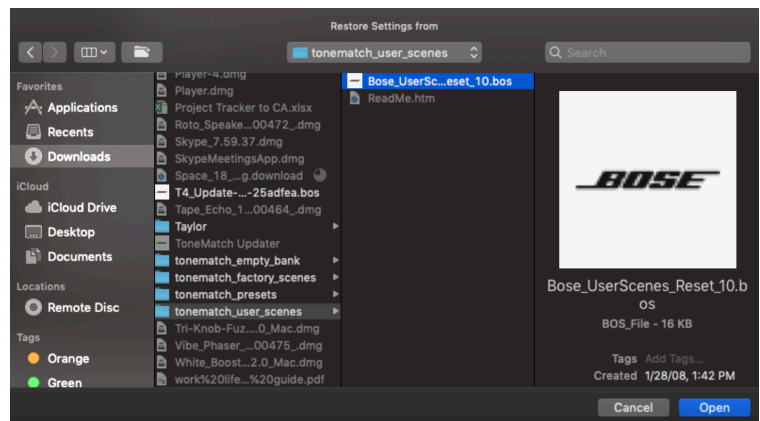
After saving your user scenes on your ToneMatch mixer, you may back them up to your computer. When you open the ToneMatch Updater, the version of the current user scenes on your mixer will be displayed next to an **Update** and **Backup** button.

1. Click **Backup** in the same row as **User Scenes**.
2. In the window that appears, select a place on your computer to store your user scenes.
3. Enter a name for the file that ends with a **.bos** file extension.
4. Click **Save** to save the file to your computer.

## Updating User Scenes

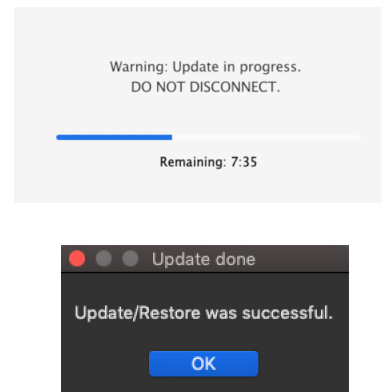
**Note:** We recommend performing the backup process (described above) before updating your user scenes. This will preserve your current settings before they are overwritten by the update process.

1. Click **Update** in the same row as **User Scenes**.
2. In the window that appears, locate the .bos file for the desired user scenes.
3. Double-click the user scenes .bos file.



The update process will begin. On your ToneMatch mixer's screen, a status bar will indicate the progress and **Updating Software Please Wait** will appear. The update will take approximately 10 minutes to complete.

A message will appear when the update is complete. Click **OK** to close the message. Your ToneMatch mixer will return to its previous state.





## Shared Scenes

The shared scene is a single user-definable scene for saving settings that may later be shared with other ToneMatch mixer users. When you open the ToneMatch Updater, the version of the current shared scene on your mixer will be displayed next to an **Update** and **Backup** button.

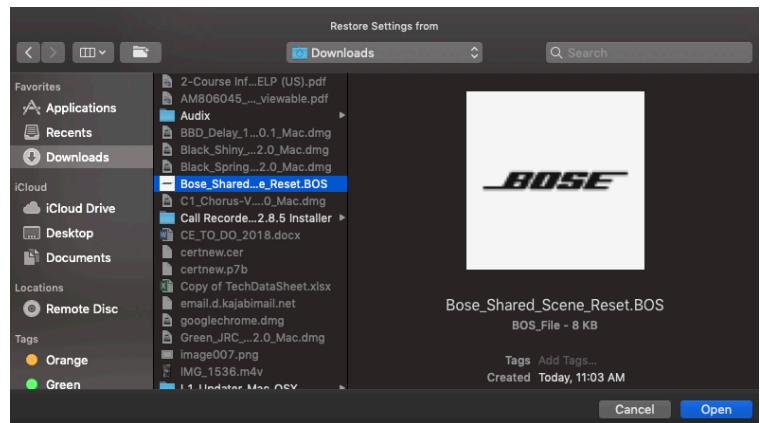
## Backing Up Shared Scenes

When you open the ToneMatch Updater, the version of the current shared scene on your mixer will be displayed next to an **Update** and **Backup** button.

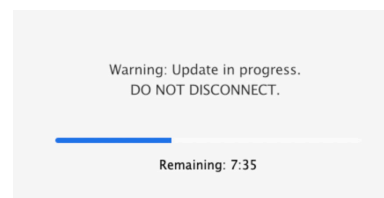
1. Click **Backup** in the same row as **Shared Scene**.
2. In the window that appears, select a place on your computer to store the shared scene.
3. Enter a name for the file that ends with a **.bos** file extension.
4. Click **Save** to save the file to your computer.

## Updating Shared Scenes

1. Click **Update** in the same row as **Shared Scene**.
2. In the window that appears, locate the .bos file for the desired shared scene.
3. Double-click the shared scene .bos file.



The update process will begin. On your ToneMatch mixer's screen, a status bar will indicate the progress and **Updating Software Please Wait** will appear. The update will take approximately 10 minutes to complete.



A message will appear when the update is complete. Click **OK** to close the message. Your ToneMatch mixer will return to its previous state.

