



ControlSpace® Remote v2.2

Release Notes

8 Feb 2018

Revision: 1.0

General

This release of ControlSpace Remote software adds includes:

- PSTN and VoIP (EX-1280C)
- Conference Room Router (EX-1280C)
- Logic controls (EX-1280C)
- Gated AMM (EX-1280C)
- Custom Device list
- [Various Defects](#)



PSTN and VoIP

Expand the PSTN and VoIP I/O in the EX-1280C to show the level, mute and dialers which can be dragged onto the canvas and resized as needed.

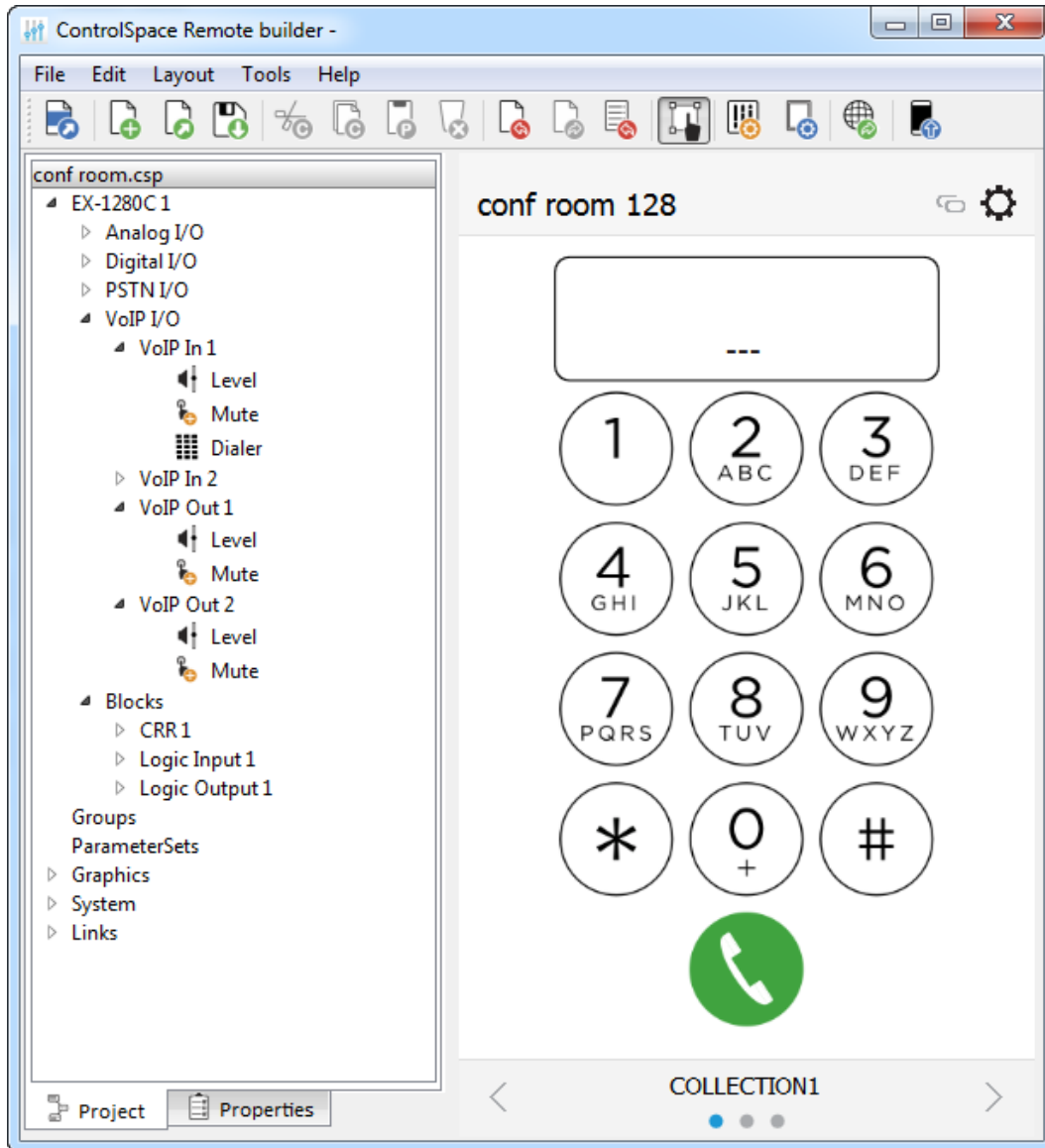


Figure 1 – PSTN/VoIP support



Conference Room Router

Expand the Conference Room Router (CRR) block to show the level and mute controls. Note, this is dynamic depending on how many far end connections are created in the Conference room router wizard.

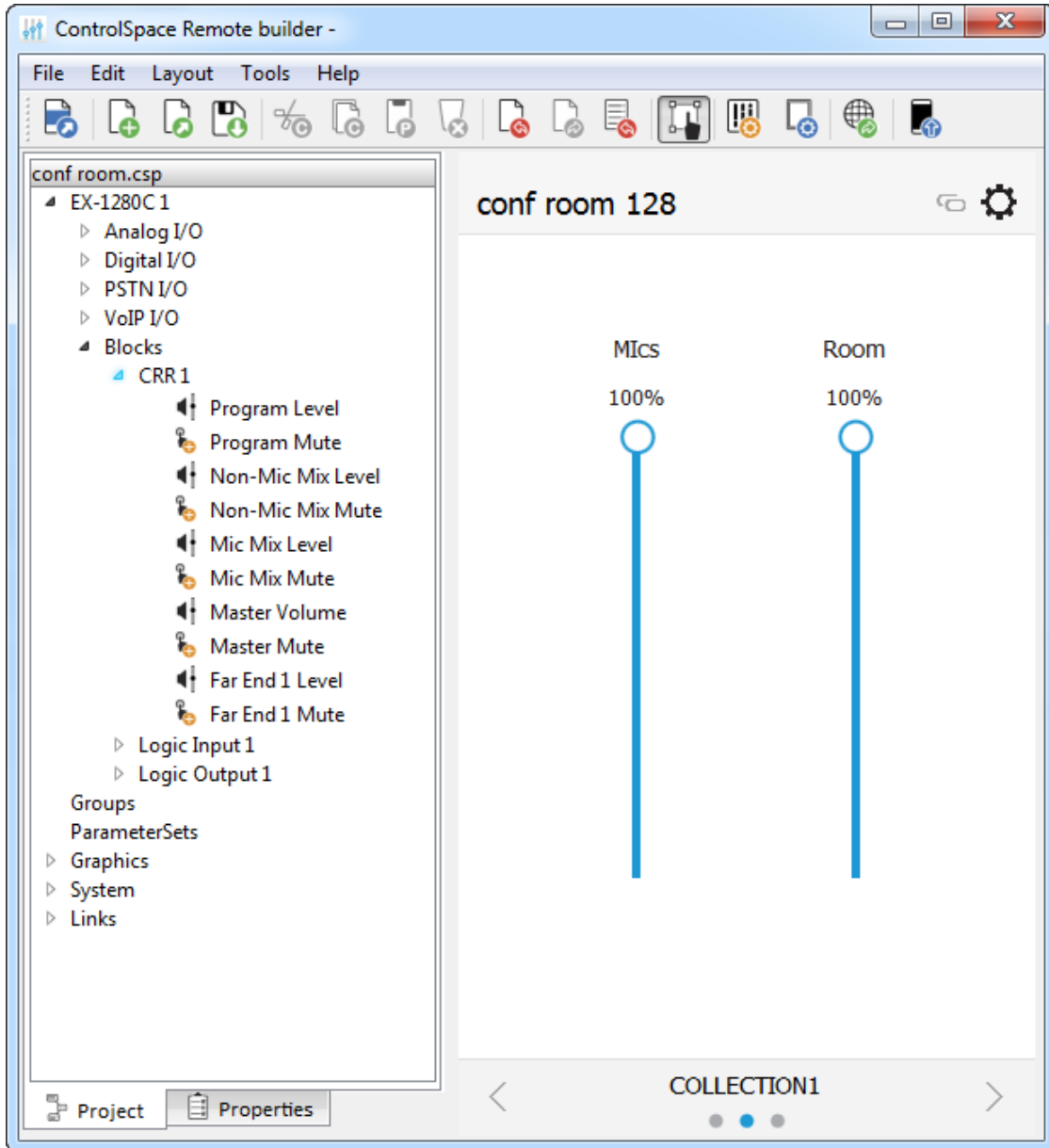


Figure 2 – Conference Room Router (CRR)

Logic Controls

Logic inputs can be used to set a state in the EX-1280C. E.g., setting a button to toggle in CSR to control the on and off state of logic in the EX-1280C. They can be set to:

- a. Toggle Channel
- b. Momentary Option

Similarly, **Logic outputs** can be used in CSR to indicate a state of a logic output in the EX-1280C. They are visual/status only.

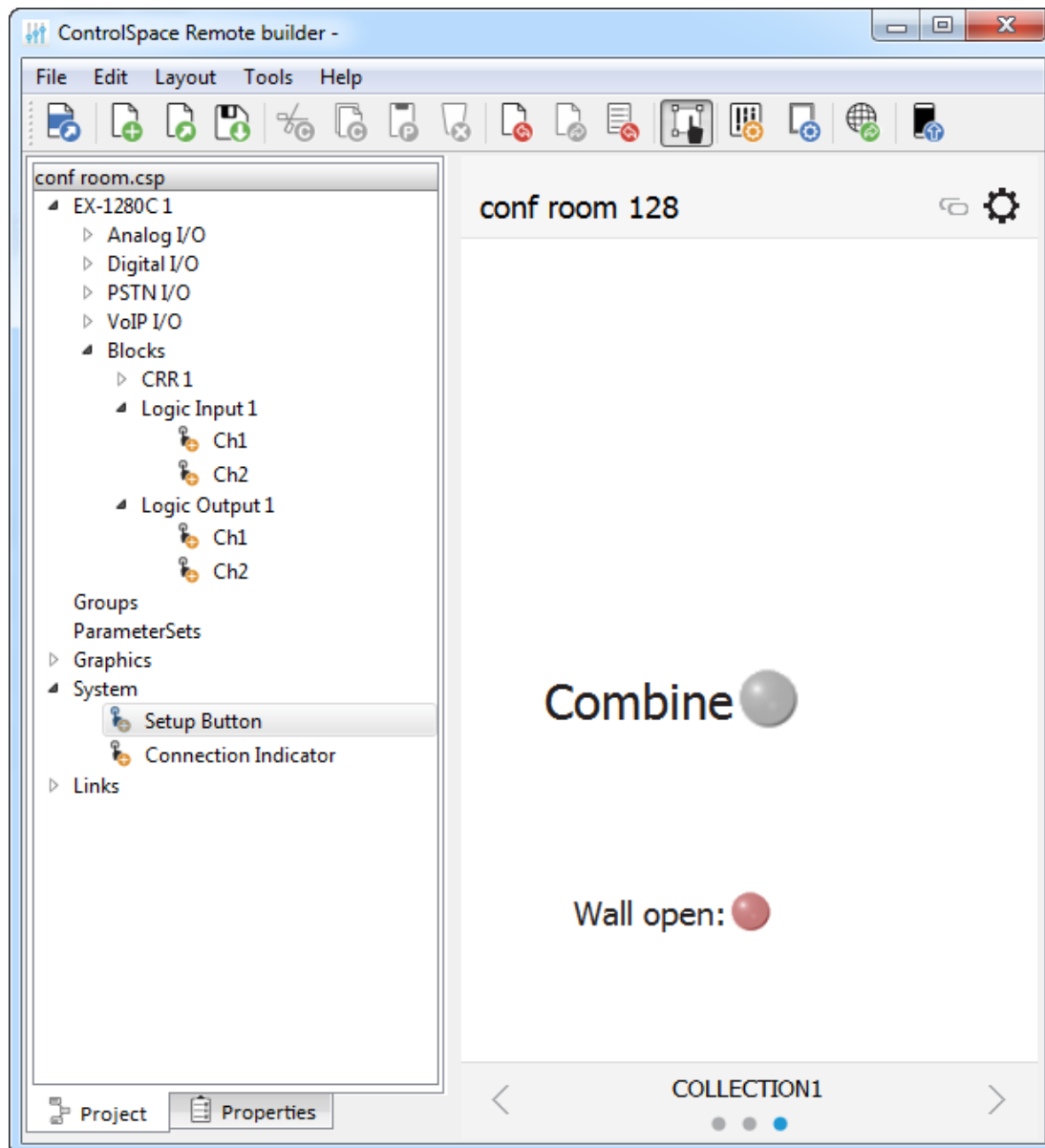


Figure 2 – Logic In/Out



Defects Fixed in this release

- Cyclic font on iOS
- Samsung control
- Randomly changing controls.
- ControlSpace Remote Builder not showing canvas
- Order issues with frames / selectors