

# CSR Builder 3.0



ControlSpace | Remote

# Table of Contents

---

<b>Introduction</b>	<b>1</b>
Bose ControlSpace Remote Builder Software	1
Bose ControlSpace Remote Client	2
Getting Started	2
Trademark Notices	2
<b>CSR Builder Window</b>	<b>3</b>
Menus	3
File Menu	3
Edit Menu	4
Layout Menu	5
Tools Menu	5
Help Menu	6
Toolbar	6
Project/Properties Panel	7
Control Panel Canvas	7
Canvas Setup Properties	8
Layout Tool	11
File Types	12
Controls	12
<b>Creating Panels Using Templates</b>	<b>13</b>
Creating Control Panels	13
Sending to a Mobile Device	22
<b>Creating Custom Panels</b>	<b>25</b>
Creating Custom Layouts	25
Importing Backgrounds	25
To place a floor plan or map on the canvas:	25
Adding images	27
To place a library image on the canvas,	28
Adding Text Frames & Labels	30
Adding a Frame	31
Adding a Region	32
Creating Custom Controls	34
Custom Buttons	34
Custom Sliders	35
Custom Drop-lists	36
Custom RCGroups	38
Custom Parameter Sets	39
Custom Parameter Set Lists	40
Custom Links	40
Custom Setup Button	42
Custom Remote Connection Indicator	43
<b>Setting an Exit PIN for MLock-Enabled Devices</b>	<b>45</b>
To Set an Exit PIN in CSR Builder :	45

---

# Introduction

## Bose ControlSpace Remote Builder Software

Bose ControlSpace Remote (CSR) Builder software is a graphical user interface tool used to design, test and deploy mobile control panels for the Bose CSR client application.

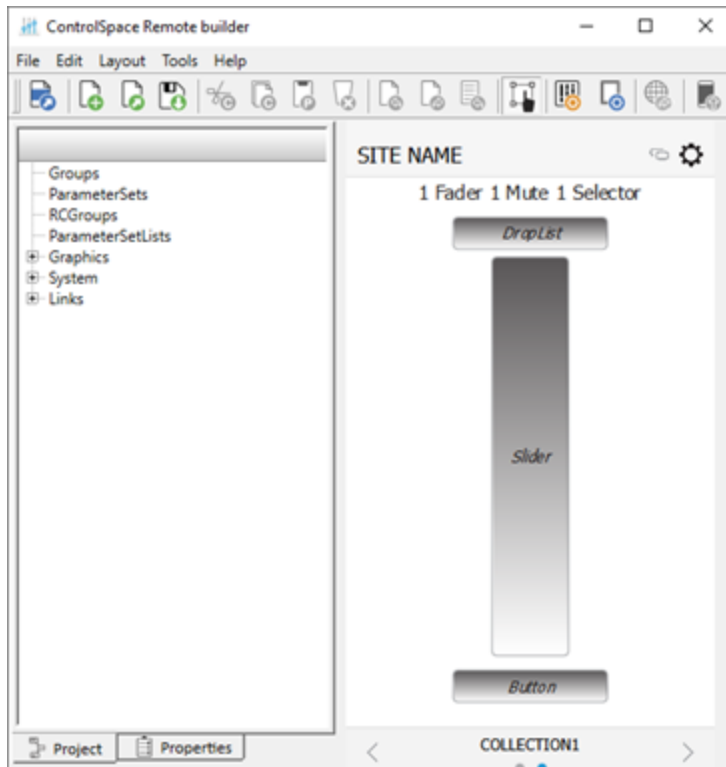
CSR Builder is used by system integrators to configure control panels that are sent to the CSR client application. Using control panel templates from within CSR Builder, integrators are able to quickly create unique interfaces for wireless control of Bose networked pro audio systems.

System designs created in ControlSpace Designer software are easily imported into CSR Builder.

Defined system control elements such as volume, mute, source selection, tone EQ, and parameter sets are assigned to end-user friendly templates. Multiple application designs—each personalized for a specific user's control needs—can be created and tested from CSR Builder and sent wirelessly to mobile devices on the network.

You can create control panels either using the built-in templates, or by using the graphical elements available in the layout mode to design customized layouts and control buttons.

- For designing with templates, see [Creating Control Panels](#).
- For designing customized panels, see [Creating Custom Layouts](#) and [Creating Custom Controls](#).



*CSR Builder Window Example*

## Bose ControlSpace Remote Client

Bose ControlSpace Remote client application is a mobile device application for Android and iOS devices that provides wireless control of networked Bose Professional system components. Personalized for each end user's mobile device, various functions of the system can be adjusted:

- Volume levels and mute state
- Source selection
- Tone EQ settings
- Parameter set recall

The CSR client application is available as a free download on the App Store or Google Play store.



*CSR Client Application Control Panel Example*

## Getting Started

To get started using the CSR Builder desktop application:

1. From [PRO.BOSE.COM](https://pro.bose.com), download and install the CSR Builder desktop application to your computer.
2. From the Google Play or App Store, download and install the CSR client application to your mobile device.
3. Ensure that your Android or iOS device is connected to the same Wi-Fi network as your ControlSpace/PowerMatch devices.

## Trademark Notices

Bose, ControlSpace, and ControlSpace Designer are trademarks of Bose Corporation.

Android™ and Google Play™ are trademarks of Google Inc.

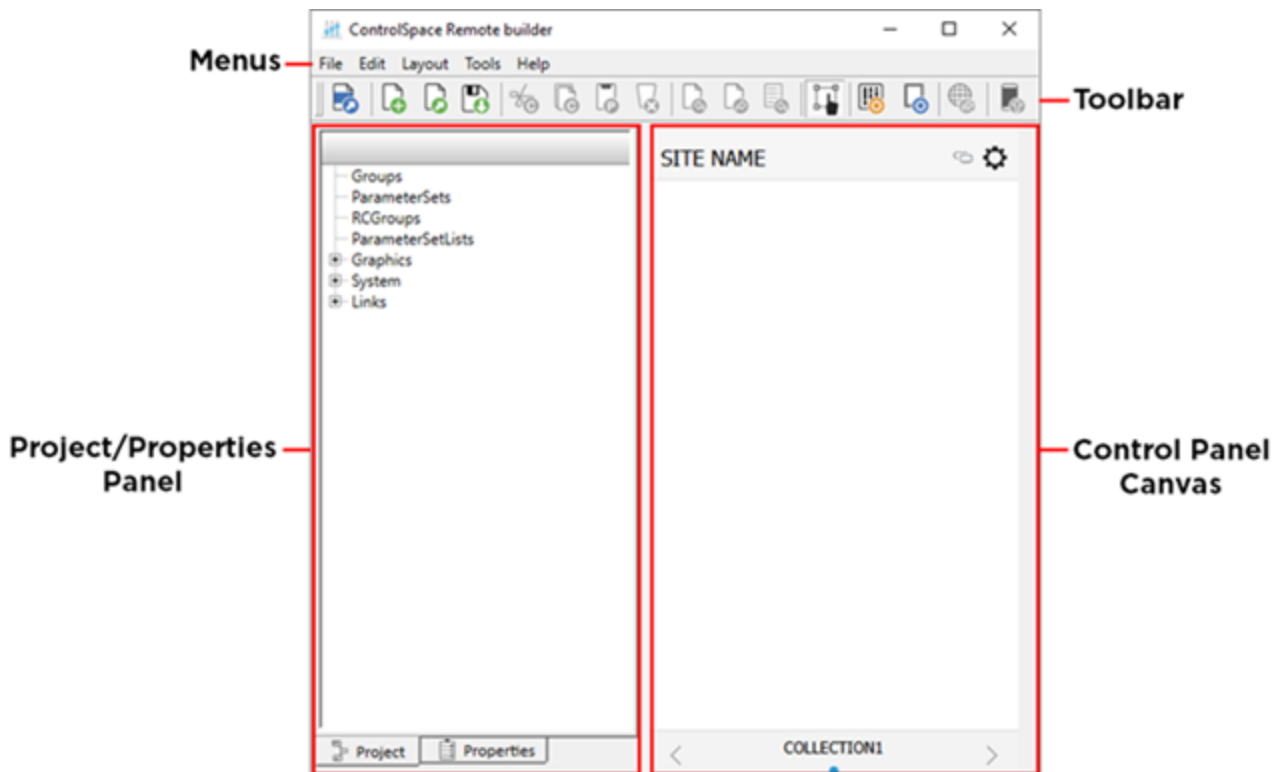
App Store® is a service mark of Apple Inc.

Wi-Fi® is a registered mark of Wi-Fi Alliance.

All other trademarks are the property of their respective owners.

## CSR Builder Window

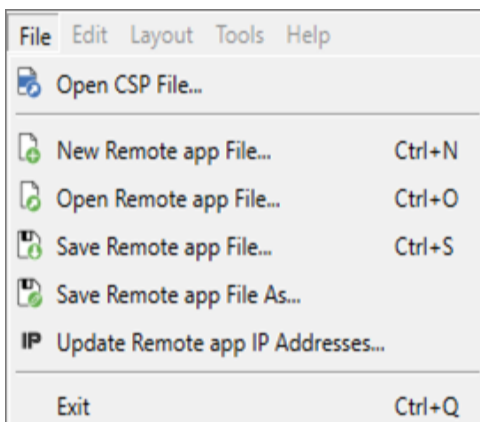
The CSR Builder window contains four key elements: a menu bar, a toolbar, the Project/Properties panel, and the Control Panel canvas.



### Menus

The menus located in the menu bar contain the main commands in CSR Builder.

#### File Menu

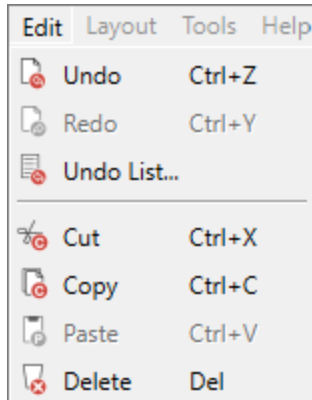


The **File** menu includes the following options:

- **Open CSP File:** opens a window for browsing to an existing ControlSpace Designer software project file.
- **New Remote app File:** opens a window in which you can select a template or blank panel to use for building a new Remote app control panel.
- **Open Remote app File:** opens a window for browsing to an existing Remote app file.

- **Save Remote app File:** initially opens a window for naming the current Remote app file and browsing to a location to save it. Subsequent selections of this menu option will immediately save changes directly to the previously selected file location.
- **Save Remote app File As:** opens a window for renaming current Remote app file and browsing to a location to save it.
- **Update Remove app IP Addresses:** opens a window for updating the IP addresses of each device in the open project file.

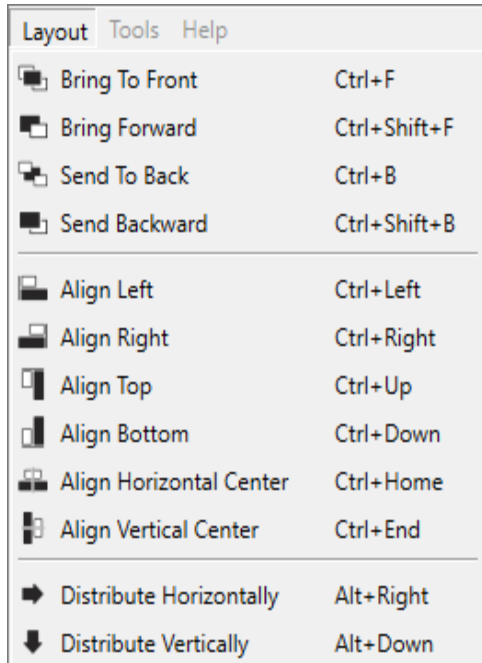
### Edit Menu



The **Edit** menu includes the following options:

- **Undo:** erases the last change and reverts to the previous state.
- **Redo:** reverts the effects of the undo action.
- **Undo List:** opens the Undo/Redo window
- **Cut:** removes the selected item and copies it to the clipboard (standard Windows editing function).
- **Copy:** copies the selected item to the clipboard (standard Windows editing function).
- **Paste:** pastes the contents of the clipboard (standard Windows editing function).
- **Delete:** removes the selected item.

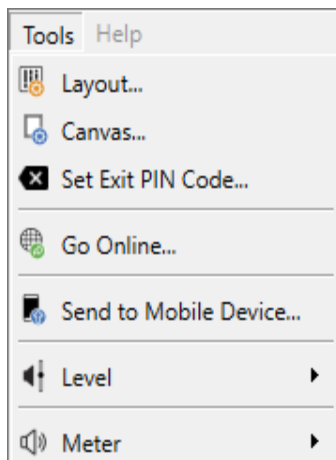
## Layout Menu



The **Layout** menu includes the following options:

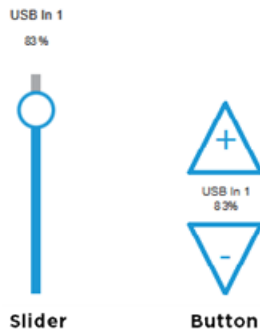
- **Bring to Front:** moves the selected object to the top layer.
- **Bring Forward:** moves the selected object one layer toward the top.
- **Send to Back:** moves the selected object to the bottom layer.
- **Send Backward:** moves the selected object one layer toward the bottom.
- **Align Left:** aligns selected objects relative to their left edges.
- **Align Right:** aligns selected objects relative to their right edges.
- **Align Top:** aligns selected objects relative to their top edges.
- **Align Bottom:** aligns selected objects relative to their bottom edges.
- **Align Horizontal Center:** aligns selected objects relative to their horizontal centers.
- **Align Vertical Center:** aligns selected objects relative to their vertical centers.
- **Distribute Horizontally:** distributes selected objects evenly along the horizontal axis
- **Distribute Vertically:** distributes selected objects evenly along the vertical axis

## Tools Menu

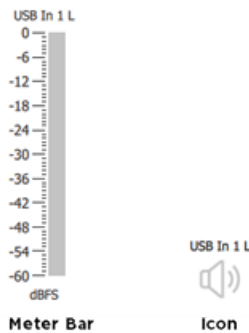


The **Tools** menu includes the following options:

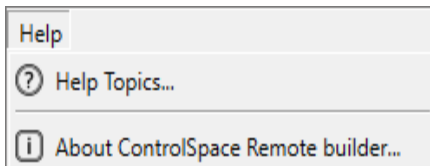
- **Layout:** opens the **Layout** dialog box, which allows you to add/delete collections and panels.
- **Canvas:** opens the **Canvas Setup** window.
- **Set Exit PIN Code:** sets **Exit PIN** that allows users to exit the CSR Client application on an MLock-enabled device.
- **Go Online:** connects to a ControlSpace network.
- **Send to Mobile Device:** transmits the control panel file to a mobile device.
- **Level:** specifies the appearance of the Level control as a slider or a button:



- **Meter:** specifies the appearance of the Meter control as a meter bar or an icon:



## Help Menu



The **Help** menu includes the following options:

- **Help Topics:** Opens User Help.
- **About ControlSpace Remote Builder:** opens a dialog box that displays the software version number.

## Toolbar

The toolbar contains icons/buttons that provide the following functions:



**Open CSP file:** Opens a window for browsing to an existing ControlSpace Designer software project file



**New Remote app File:** Opens a window in which you can select a template or blank panel to use for building a new Remote app control panel





**Open Remote app File:** Opens a window for browsing to an existing Remote app file



**Save Remote app File:** Initially opens a window for naming the current Remote app file and browsing to a location to save it. Subsequent selections of this tool will immediately save changes directly to the previously selected file location



**Cut**



**Copy**



**Paste**



**Delete**



**Undo**



**Redo**



**Undo List:** Opens Undo list window



**Edit Mode:** Enables/disables Edit mode



**Layout:** Opens ["Layout Tool" on page 11](#)



**Canvas:** Opens ["Canvas Setup Properties" on the next page](#)



**Go Online**



**Send to Mobile Device:** Sends file to mobile device

## Project/Properties Panel

Selecting the **Project** tab displays a tree view of devices and controls in the opened project file. Selecting the **Properties** tab displays properties for a selected object on the canvas.

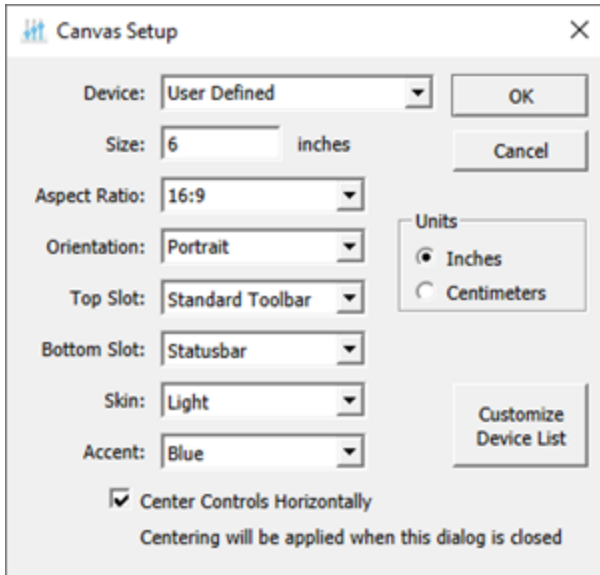
### Control Panel Canvas

This canvas is the workspace for creating control panels. The size, shape, orientation, and other properties of the Canvas is set using the **Canvas Setup Properties** tool in the toolbar.

See ["Canvas Setup Properties" on the next page](#) for more details.

## Canvas Setup Properties

The Canvas Setup window allows you to define the size and features of the control panel you are creating.



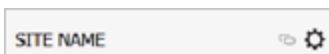
Canvas Setup window

The Canvas Setup window includes the following properties:

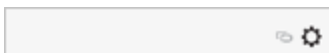
- **Device:** Determines the canvas **Size** and **Aspect Ratio** for the selected device. The drop-down menu includes several pre-populated options, as well as any devices added using the **Custom Device List** button (described later in this topic). The **User Defined** option allows you to set values such as size and aspect ratio manually.

**Note:** *Size and Aspect Ratio can only be adjusted manually when **User Defined** is selected as the device.*

- **Size:** Diagonal screen dimension of the selected device.
- **Units:** Specifies whether the measurement unit in the **Size** field is in inches or centimeters. This option appears on the right side of the window.
- **Aspect Ratio:** The proportional relationship between the width and height of the screen on the selected device.
- **Orientation:** Changes the orientation of the screen between portrait and landscape.
- **Top Slot/Bottom Slot:** Places the Standard Toolbar, Minimum Toolbar, Status bar, or no toolbar (None) in the top/bottom border of the canvas.
  - **Standard Toolbar:** The left side of the Standard Toolbar includes the name of the site where the panel will be used. You can edit the site name in the **Layout** window. The right side of the toolbar includes an **Online/Offline** link indicator and a **Setup** information button.

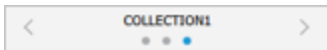


- **Minimum Toolbar:** This toolbar includes the **Online/Offline** link indicator and the **Setup** information button.



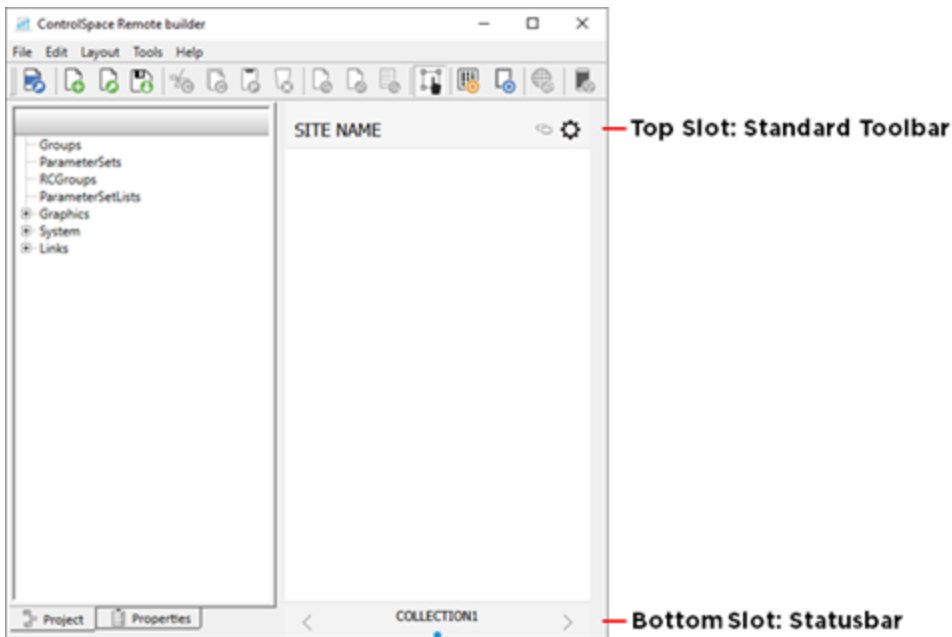
- **Statusbar:** The Statusbar indicates which collection of panels has been selected. The dots indicate how many panels are in the collection (there is always one blank panel). Click the left/right

arrows to view other panels – the highlighted dot will move left/right accordingly. If multiple collections exist, you can click **COLLECTION** to open a list of panel collections and select a different one.

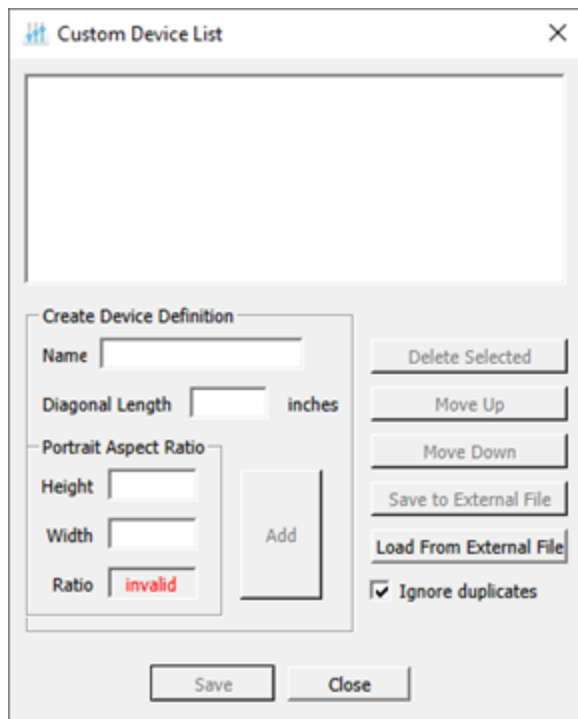


- **None:** Removes the toolbar from the canvas.

**Example:** The following image shows the **Standard Toolbar** specified for the **Top Slot** of the canvas and **Statusbar** specified for the **Bottom Slot** of the canvas:



- **Skin:** Selects a light or dark skin for the panel.
- **Accent:** Selects an accent color (Black, Blue, Green, Pink, Red, or Yellow) for the controls dragged into the panel.
- **Center Controls Horizontally:** When this check box is selected, the controls are centered in the workspace. This applies only when creating custom control panels.
- **Units:** Specifies units of measurement as either inches or centimeters.
- **Customize Device List:** This button appears on the right side of the **Canvas Setup** window and opens the **Custom Device List** dialog box, in which you can create device definitions other than those in the **Device** drop-down menu.

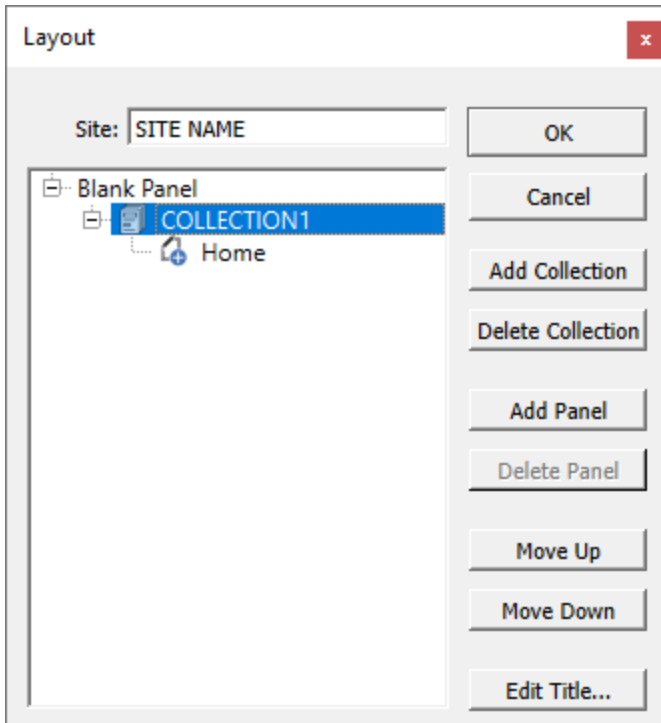


The screenshot shows a dialog box titled "Custom Device List" with a close button (X) in the top right corner. The dialog is divided into several sections. At the top is a large empty rectangular area for a list. Below this is a "Create Device Definition" section containing input fields for "Name", "Diagonal Length" (with a unit of "inches"), "Height", "Width", and "Ratio". The "Ratio" field is highlighted in red and labeled "invalid". To the right of these fields is an "Add" button. To the right of the "Create Device Definition" section is a vertical stack of buttons: "Delete Selected", "Move Up", "Move Down", "Save to External File", and "Load From External File". Below these buttons is a checkbox labeled "Ignore duplicates" which is checked. At the bottom of the dialog are "Save" and "Close" buttons.

*Custom Device List dialog box*

## Layout Tool

The **Layout** tool manages the collections and control panels being created in CSR Builder. By default, the **Layout** tool provides one collection (COLLECTION1) with one blank panel (Home). You can add additional blank panels from the template list to create custom layouts.



*Default Layout tool content*

The **Layout** tool provides the following control buttons:

- **OK:** Stores changes and closes the tool.
- **Cancel:** Closes the tool without making any changes.
- **Add Collection:** Adds another collection to the list.
- **Delete Collection:** Removes the selected collection from the list.
- **Add Panel:** Adds another control panel to the list
- **Delete Panel:** Removes the selected control panel from the list
- **Move Up:** Moves the selected item up one line in the list.
- **Move Down:** Moves the selected item down one line in the list.
- **Edit Title:** Allows changing the title of the selected collection or control panel.

## File Types

The CSR Builder application is compatible with the following file types:

File Type	Description
.csp	ControlSpace Designer project file.
.cpf	Custom control panel file.
.cpz	A packaged file that includes data from a control panel file (.cpf) and its associated ControlSpace Designer project file (.csp).

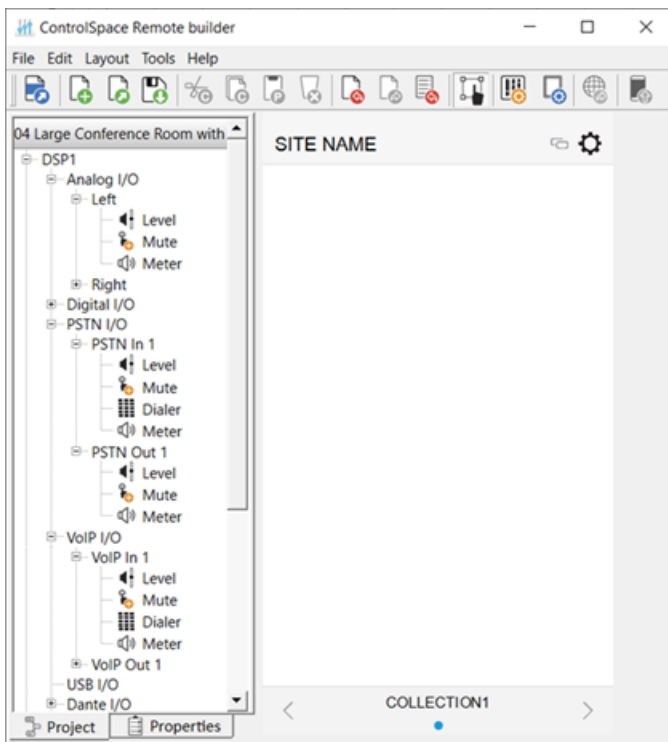
## Controls

When a ControlSpace Designer project file is opened in CSR Builder. All of the devices in that design appear in the Project/Properties panel (the left pane), along with the signal processing blocks that are programmed in each device.

Controls are the parameters within each signal processing block (module) that you can assign to a control panel so that they can be controlled with a mobile device running the CSR client application.

For example, the image below shows the following **Input/Output** controls:

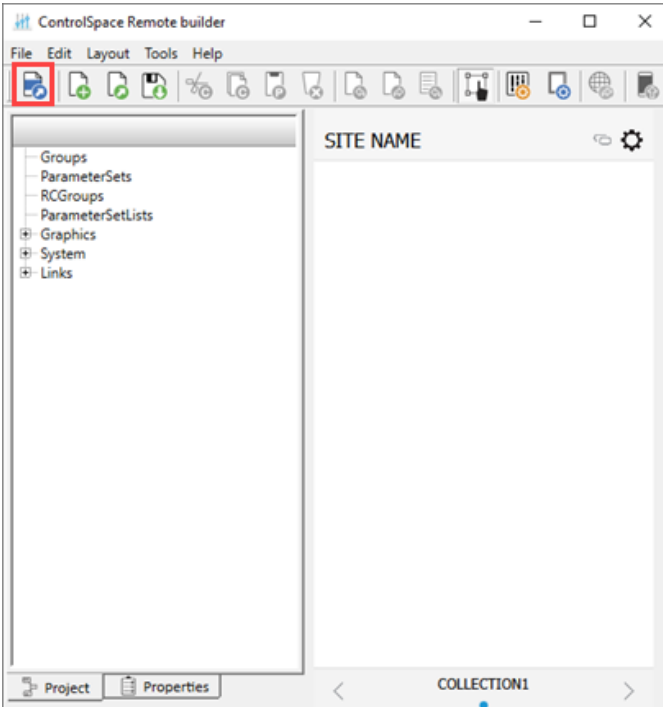
- **Level:** Allows the remote user to adjust the volume level.
- **Mute:** Allows the remote user to control the Mute On/Off state.
- **Dialer:** (PSTN and VoIP inputs only) Allows the remote user to dial numbers/initiate calls, and answer calls with the mobile device.
- **Meter:** Allows the remote user view input/output signal strength.



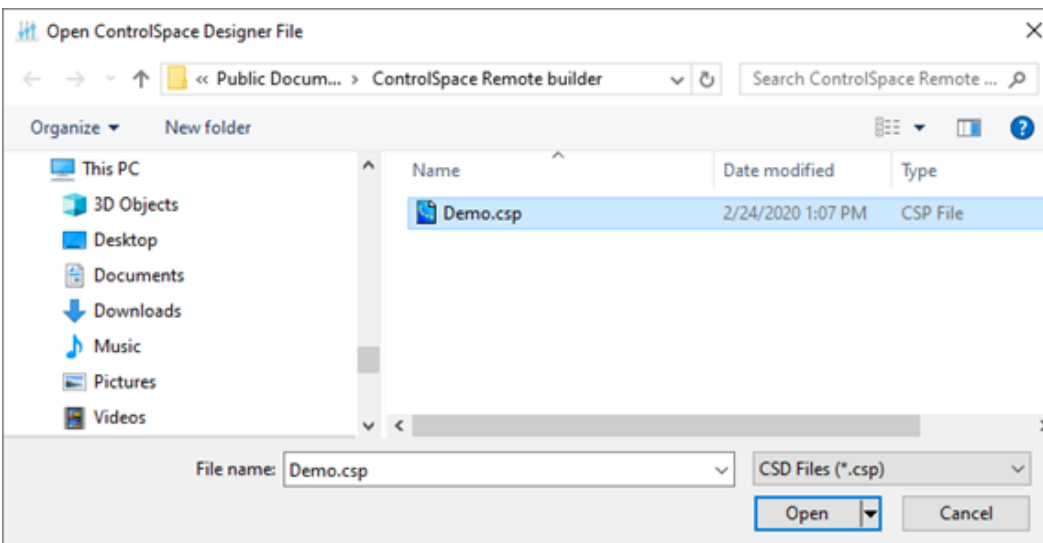
# Creating Panels Using Templates

## Creating Control Panels

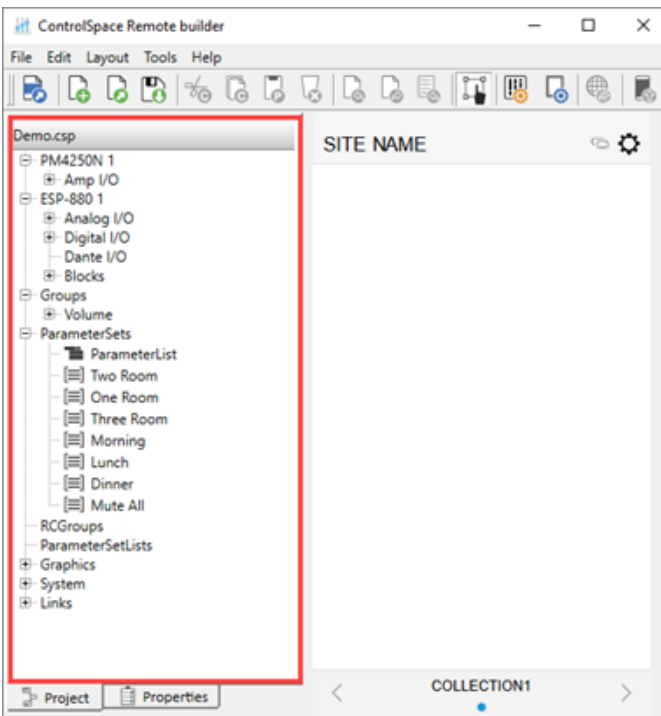
1. Open the CSR Builder application on your computer using the desktop icon.
2. In the **CSR Builder** window, click the **Open CSP File** tool.



3. In the **Open ControlSpace Designer File** window, select a ControlSpace Designer (CSD) project file and click **Open**.

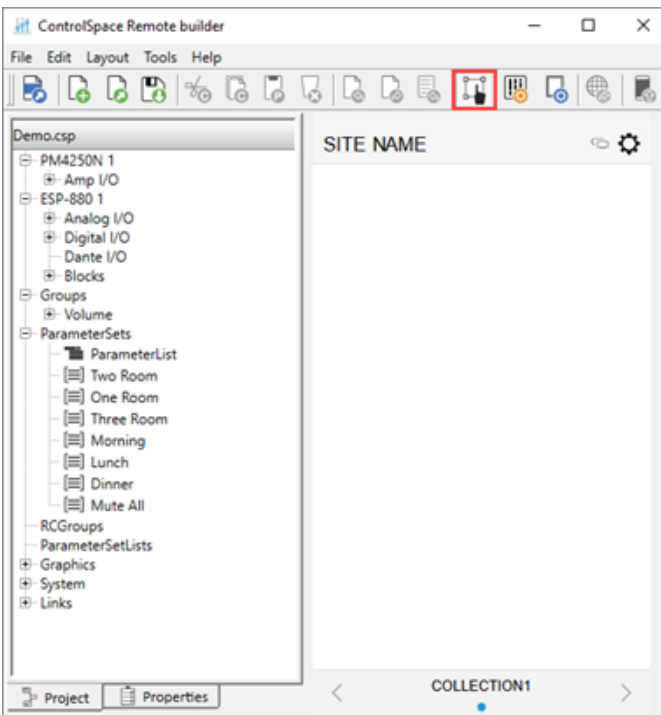


4. Ensure that all of the devices and controls in the CSD project are listed in the **CSR Builder** window.



5. Before you begin creating a control panel, ensure that **Edit** mode is selected.

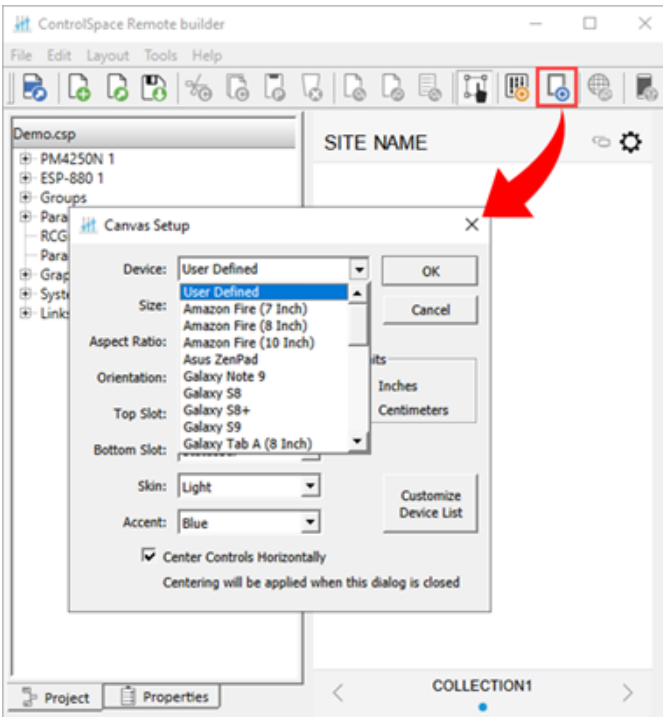
**Note:** *Edit mode must be enabled in order to create a control panel.*



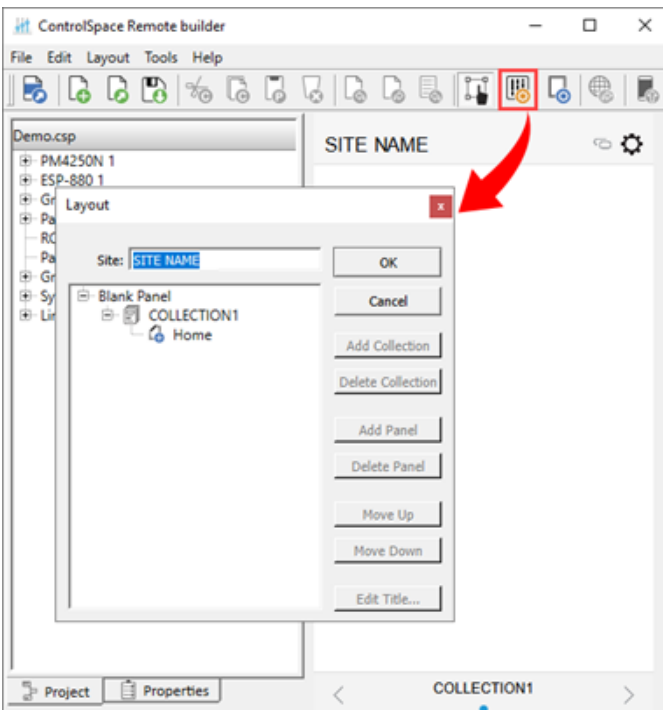
6. In the toolbar, click the **Canvas** tool. Make your selections and click **OK**.

**Note:** See ["Canvas Setup Properties" on page 8](#) for more information.

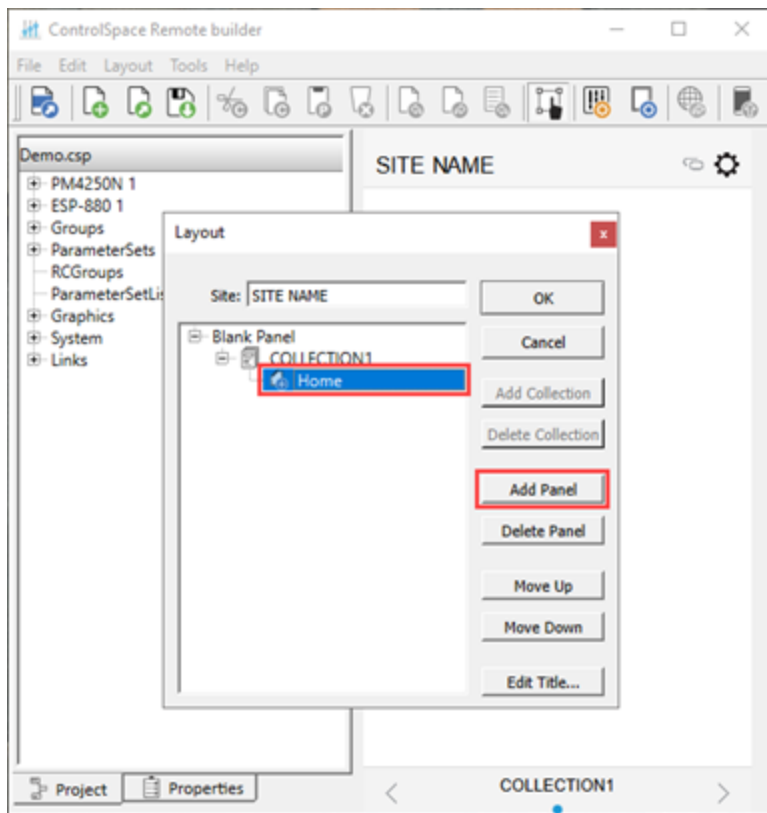




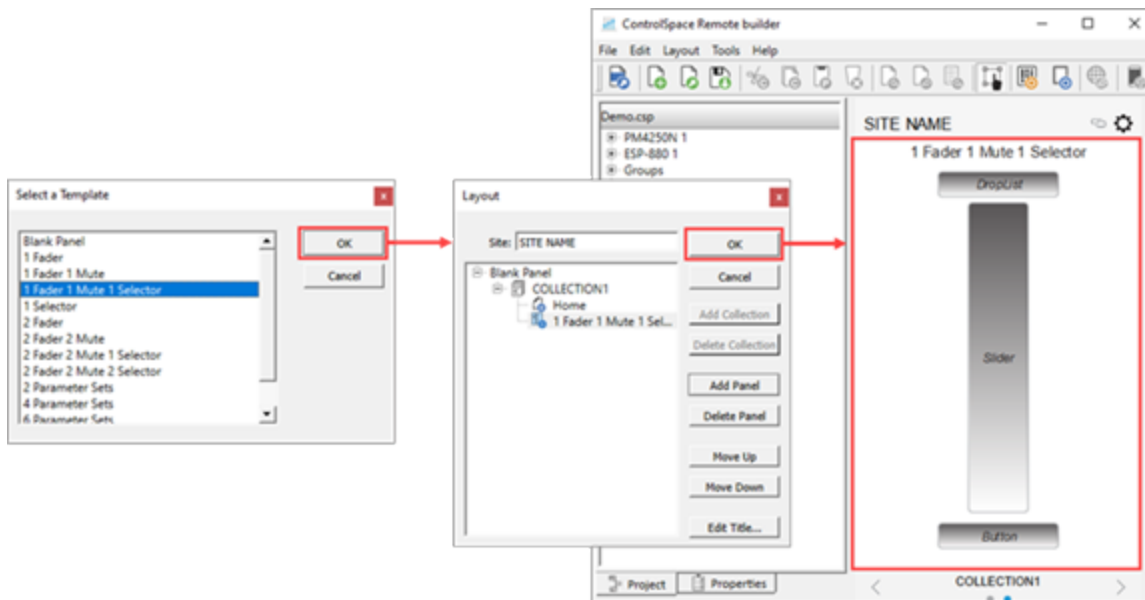
7. In the toolbar, click the **Layout** tool.



8. In the **Layout** window, add a template to the workspace. Click **Home** under **COLLECTION1**, and then click **Add Panel**.



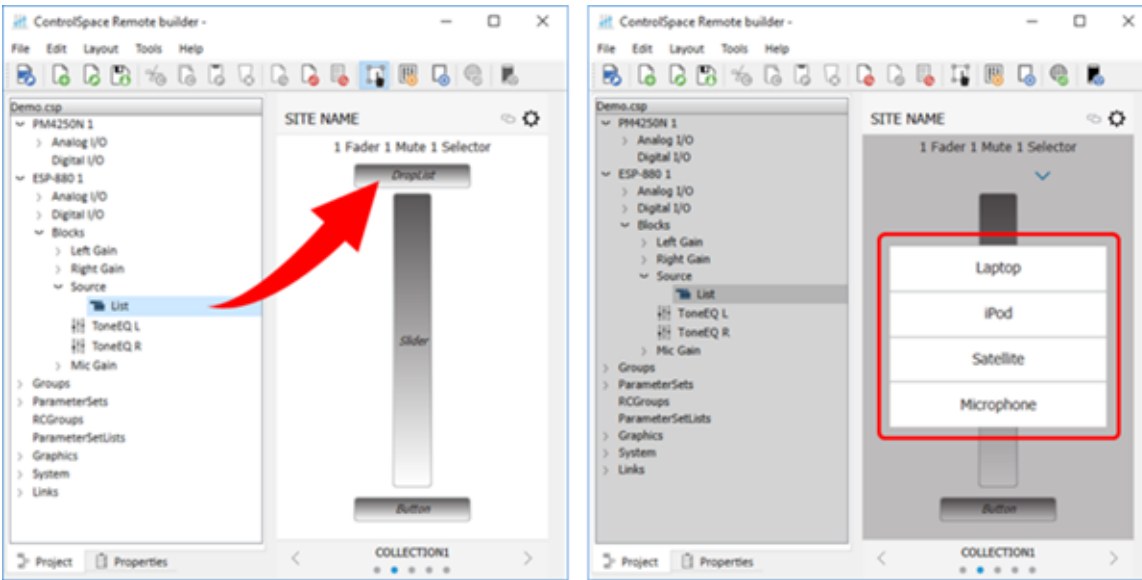
9. In the **Select a Template** window, select a template, and then click **OK**. In the **Layout** window, click **OK**. The selected template now appears in the workspace.



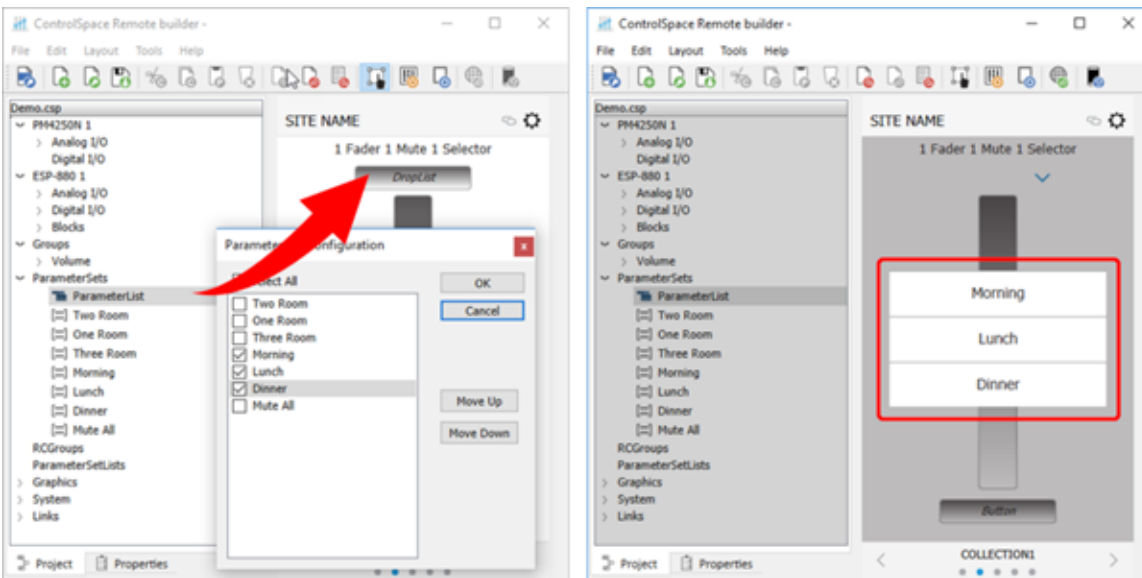
10. Drag controls to the predefined locations on the control panel template (see the following examples).

Notes:

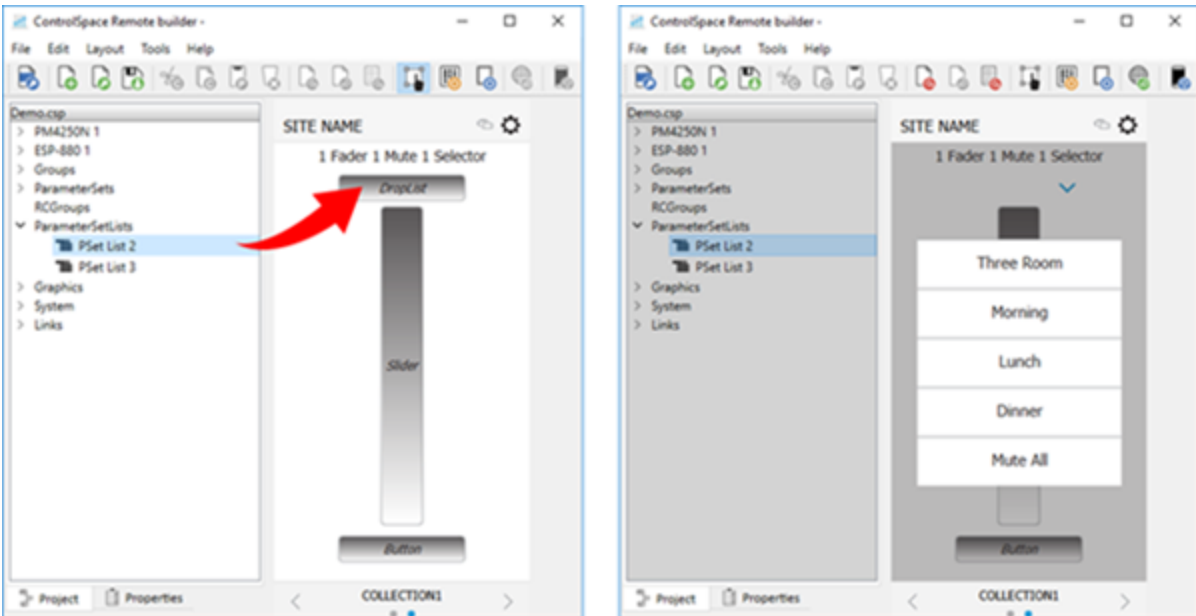
- For more information about controls, see the [Project Controls](#) topic in this guide.
- To verify the operation of any control panel feature such as a slider or drop list, be sure to disable **Edit** mode.



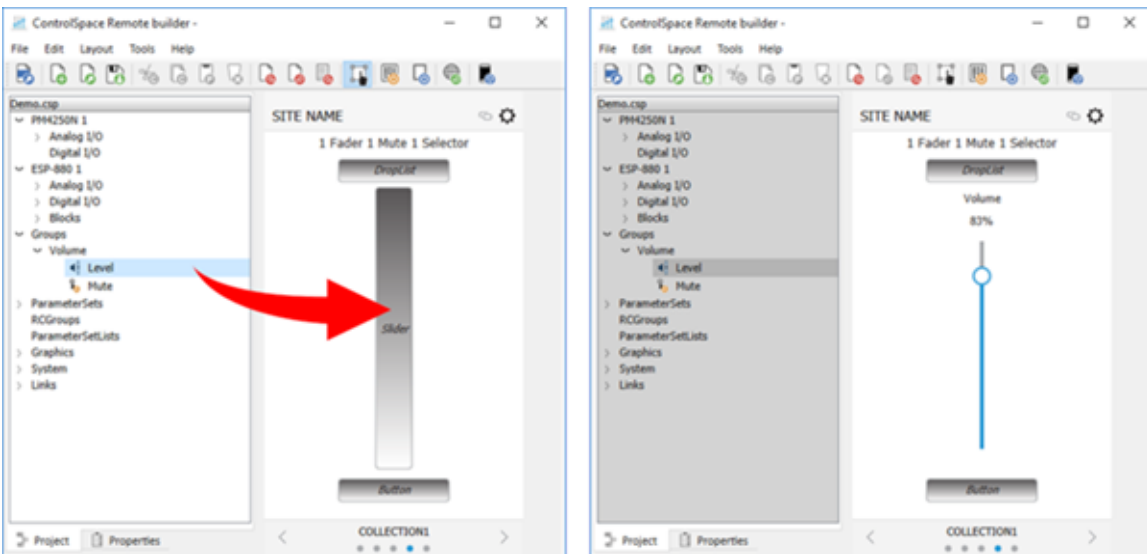
*Dragging a Source list to the Drop List*



*Dragging a list of Parameter Sets to the Drop List*

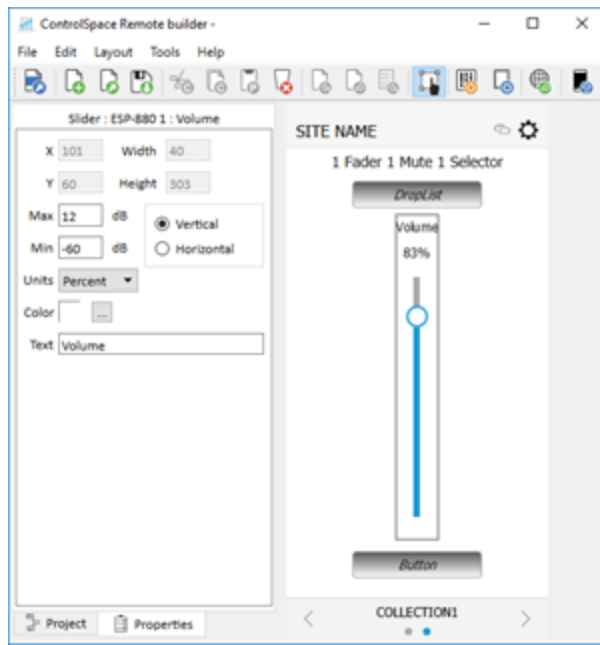


*Dragging a Parameter Set List to the Drop List*



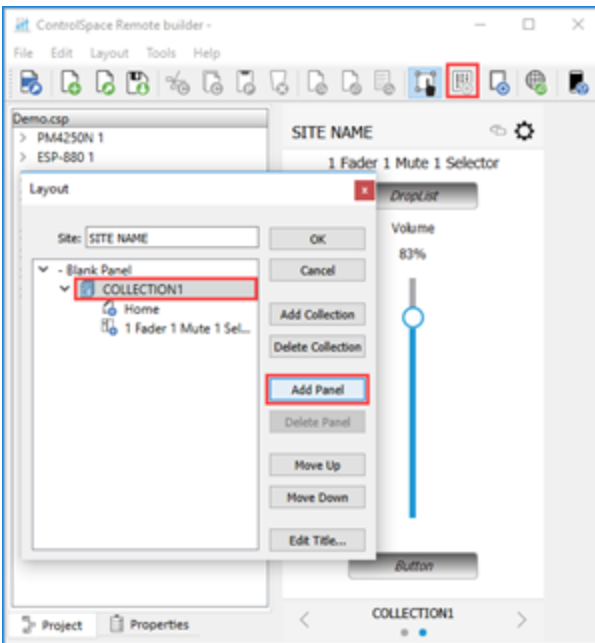
*Dragging the Group Volume Gain to the slider*

11. To change volume limits on a slider, select the slider and click the **Properties** tab. Within this pane you can set minimum and maximum limits, and select **Percent** or **dB** for units.



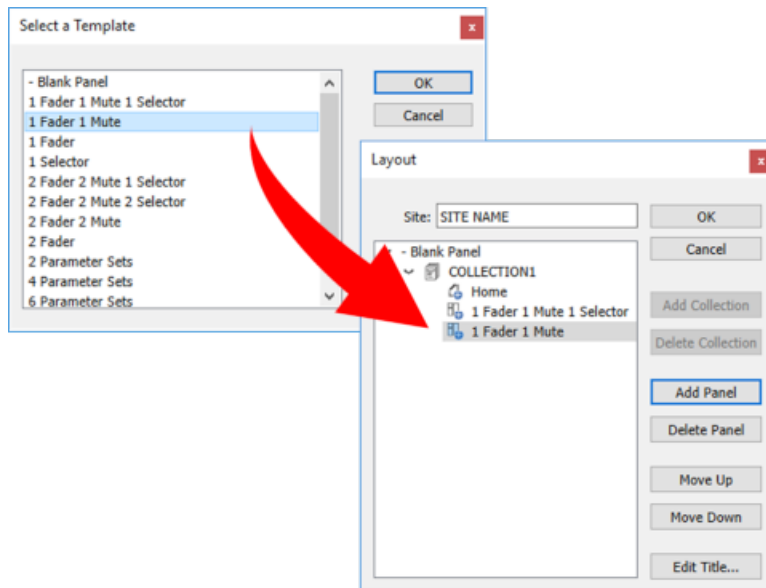
### Volume Properties

12. To add another panel, click the **Layout** button, select **COLLECTION1**, and then click **Add Panel**.

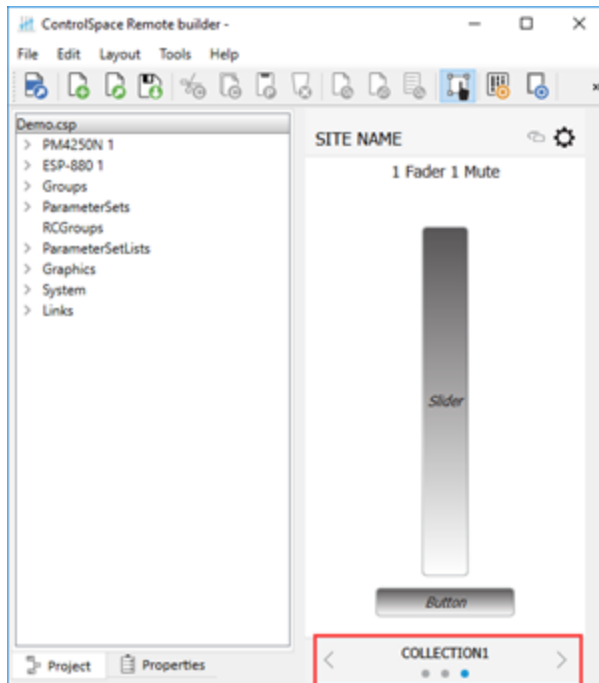


### Locating the Add Panel button

13. Select a panel template and click **OK**. Repeat this procedure to add as many panels as needed. Click the left and right arrows in the **Status** bar to scroll through the panels.

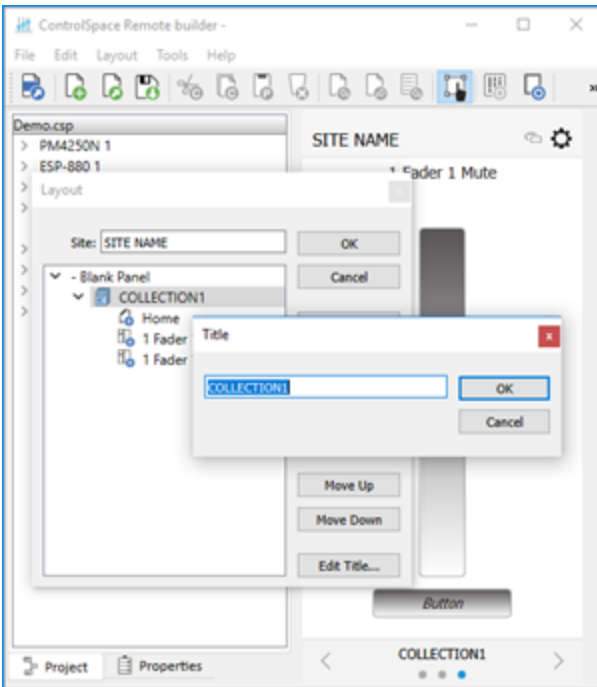


*Adding another panel template to the Layout*



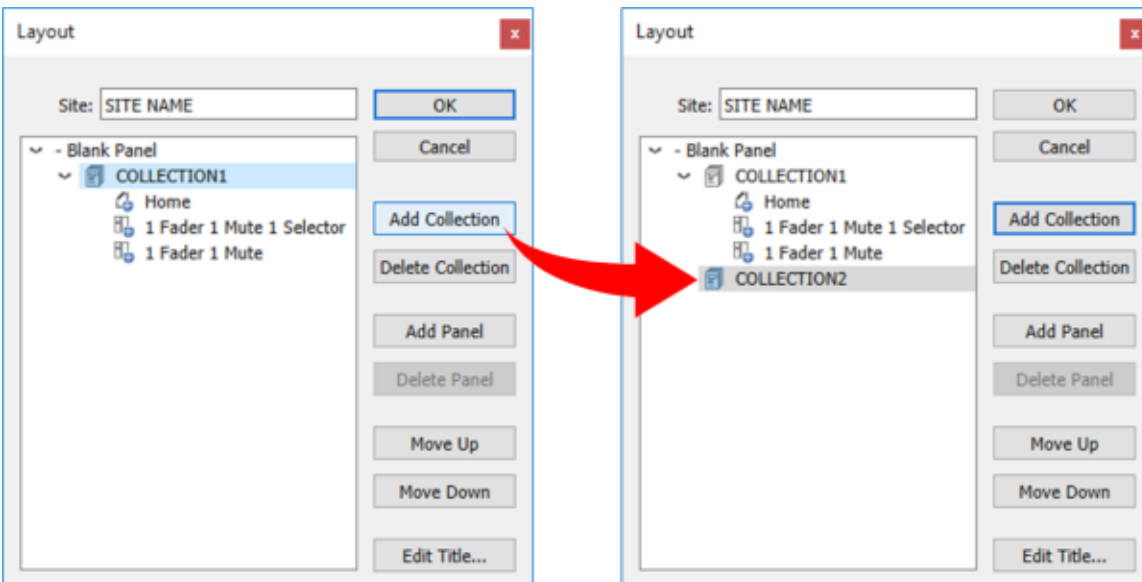
*COLLECTION1 with one blank panel and two templates*

**Note:** To change the collection name, select **COLLECTION1** and click **Edit Title**. Enter the new name and click **OK**.



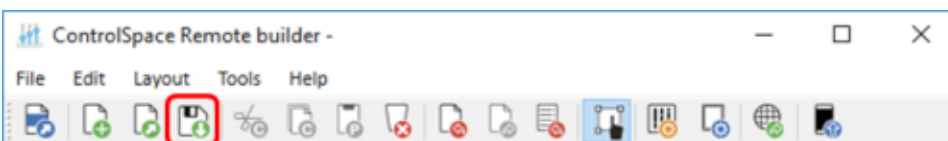
*Changing name of COLLECTION1*

14. To add another collection, select **COLLECTION1** again and click **Add Collection**. COLLECTION2 is added to the Layout.



*Adding a collection*

15. To create more panels, add more templates or blank panels and drag-and-drop controls to them.
16. When you are done, click **Save Remote app File**.

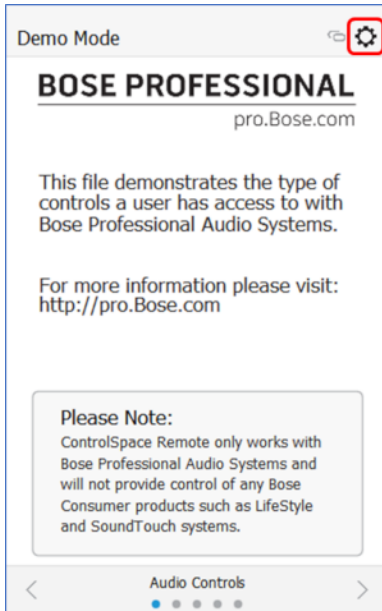


*Save Remote app File button*

## Sending to a Mobile Device

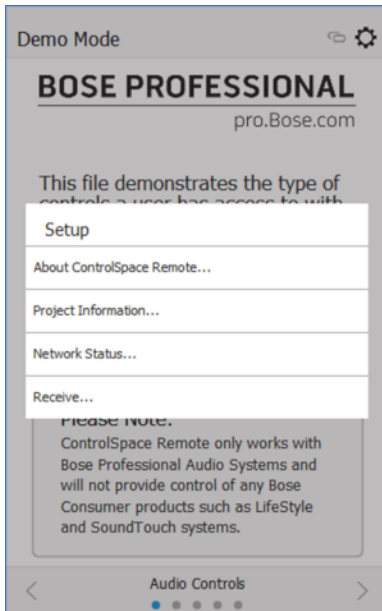
To send a panel to your mobile device, make sure your PC and mobile device are connected to the same Wi-Fi router.

1. Open the CSR client app on your mobile device.
2. Touch the **Settings** icon.



*Remote App Settings icon*

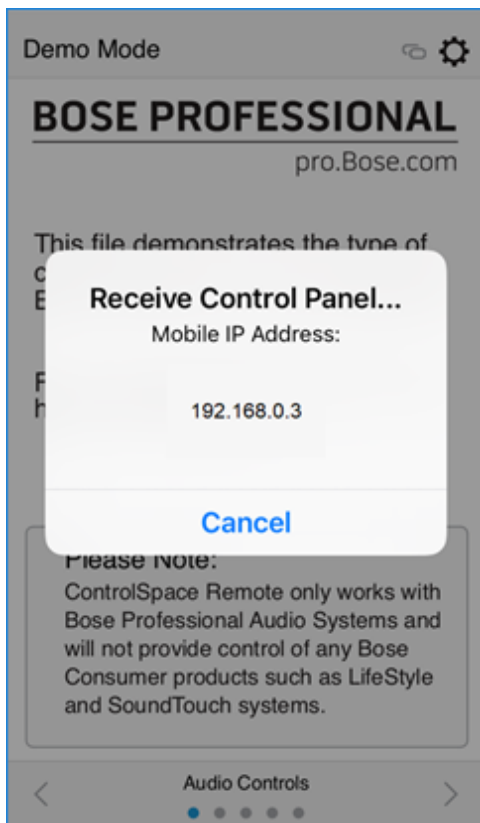
3. In the pop-up menu, touch **Receive**.



*Selecting Receive in the Remote app*

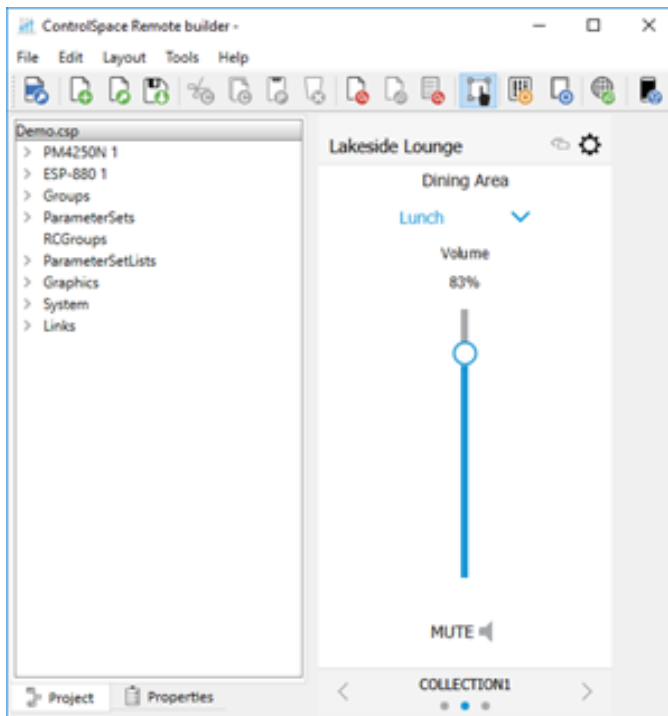
The **Receive Control Panel** dialog box appears and reveals the IP address that you will use in Step 5.





*Receive Control Panel Dialog Box*

- On your computer, in the CSR Builder toolbar, click the **Send to Mobile Device** icon.



*Send to Mobile Device*

- In the **Send to Mobile Device** dialog box, enter the IP address from the **Receive Control Panel** dialog box on the mobile device and click **OK**.

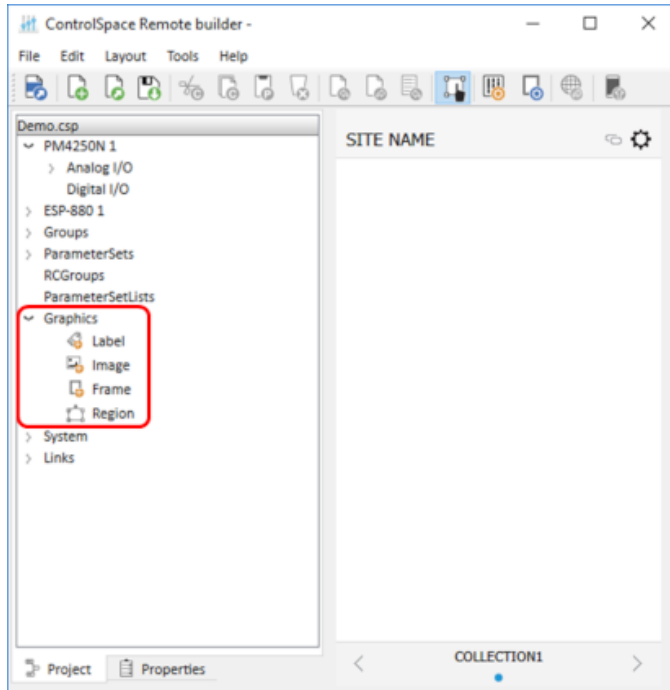


The control panel file will be transferred to the mobile device.

# Creating Custom Panels

## Creating Custom Layouts

You can create custom control panels by using the tools and options available in CSR Builder. From the **Project** tab, you can combine labels, images, frames, and regions to create a custom layout. The **Layout** menu functions can help you position the objects you placed on the canvas.

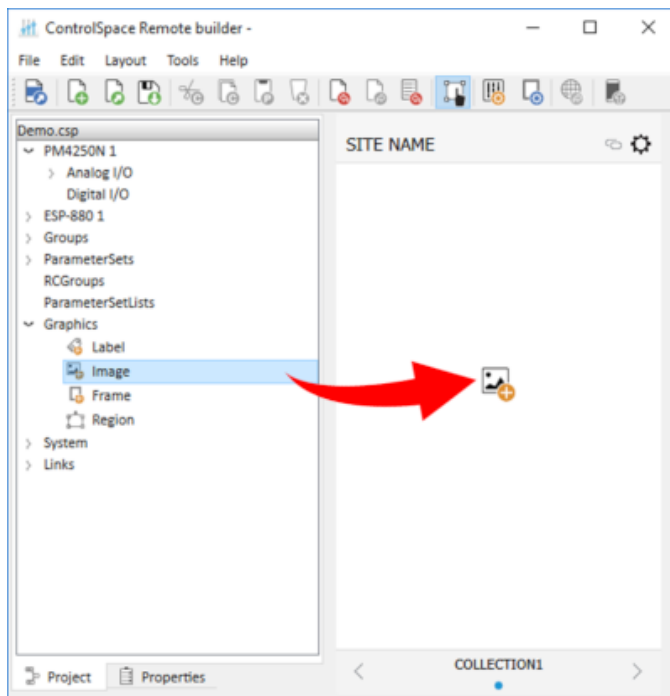


## Importing Backgrounds

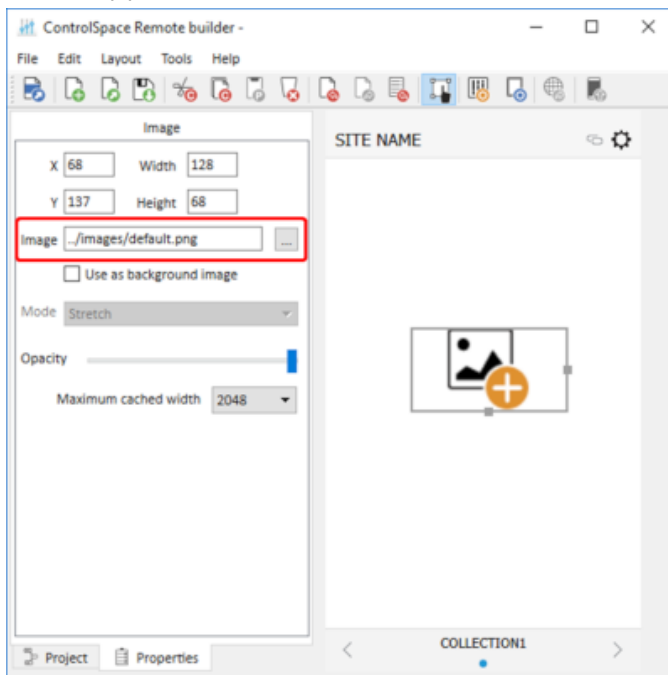
You can import backgrounds to place maps, floor plans, or other images of a venue onto the canvas.

### To place a floor plan or map on the canvas:

1. On the **Project** tab, expand the **Graphics** group.
2. Drag the **Image** icon onto the canvas.

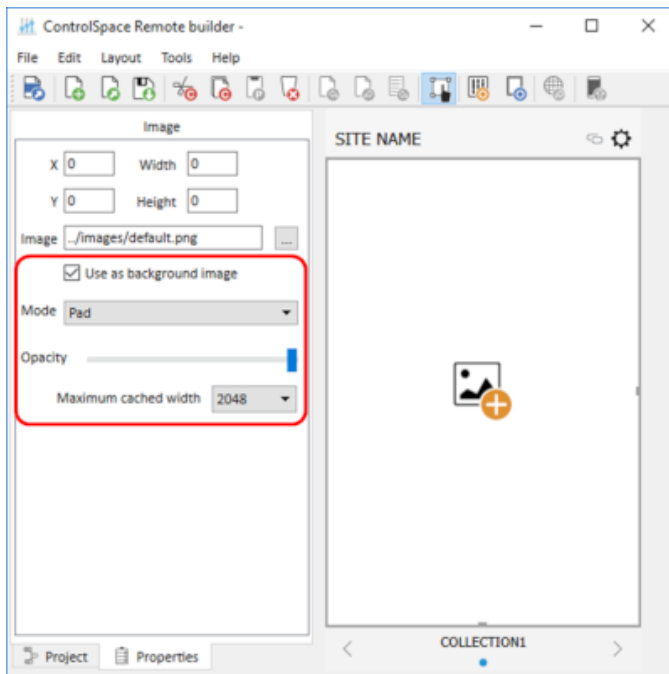


3. In the canvas, double-click the **Image** icon. The **Properties** tab will automatically be selected.
4. On the **Properties** tab, locate the file you want to import from your computer and click **Open**. The file will appear on the canvas.



5. Re-size the image by dragging the handles on the right side and bottom of the image frame. Alternatively, set the image as a background image by selecting the **Use as background image**

check box and adjusting the available parameters, which are listed below.



- **Mode:** Specify how to adjust the background image size with respect to the canvas. Options include:
  - **Stretch:** Fits the width and height of the image to match the canvas size. This option does not preserve the aspect ratio of the original image.
  - **Preserve aspect and fit:** Fits the larger image dimension to the canvas size, while preserving the aspect ratio of the original image.
  - **Preserve aspect and crop:** Fits the smaller image dimension to the canvas size, while preserving the aspect ratio of the original image.
  - **Tile:** Repeats the image horizontally and vertically to fill the canvas. This option preserves the size and aspect ratio of the original image.
  - **Tile Vertically:** Fits the image width to the canvas size, then repeats the image vertically to fill the canvas. This option does not preserve the aspect ratio of the original image.
  - **Tile Horizontally:** Fits the image height to the canvas size, then repeats the image horizontally to fill the canvas. This option does not preserve the aspect ratio of the original image.
  - **Pad:** Centers the image on the canvas. This option preserves the aspect ratio of the original image.
- **Opacity:** Use the slider to adjust the opacity of the background image.
- **Maximum cached width:** Set the maximum cache width used for the background image. Larger cache size allows for higher-resolution images, but may have a longer load time. Smaller cache size may allow image to load faster, but display with a lower resolution.

## Adding images

CSR Builder software includes an image library of sources and zones that may be used to create your custom control panel. Library images are available in five colors: Blue, Green, Pink., Red, and Yellow.



*Source Image Library*

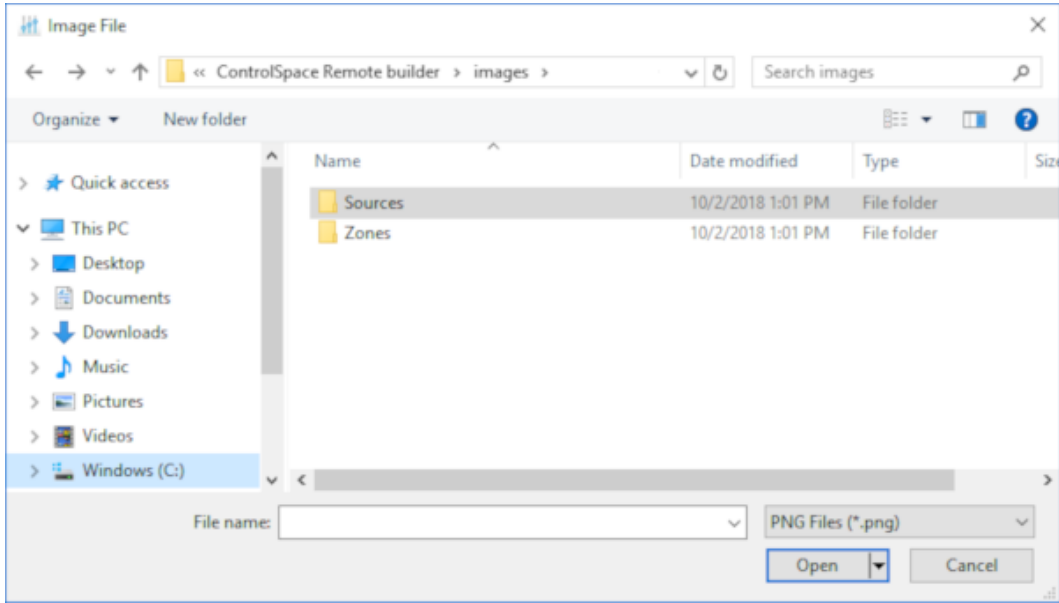


*Zone Image Library*

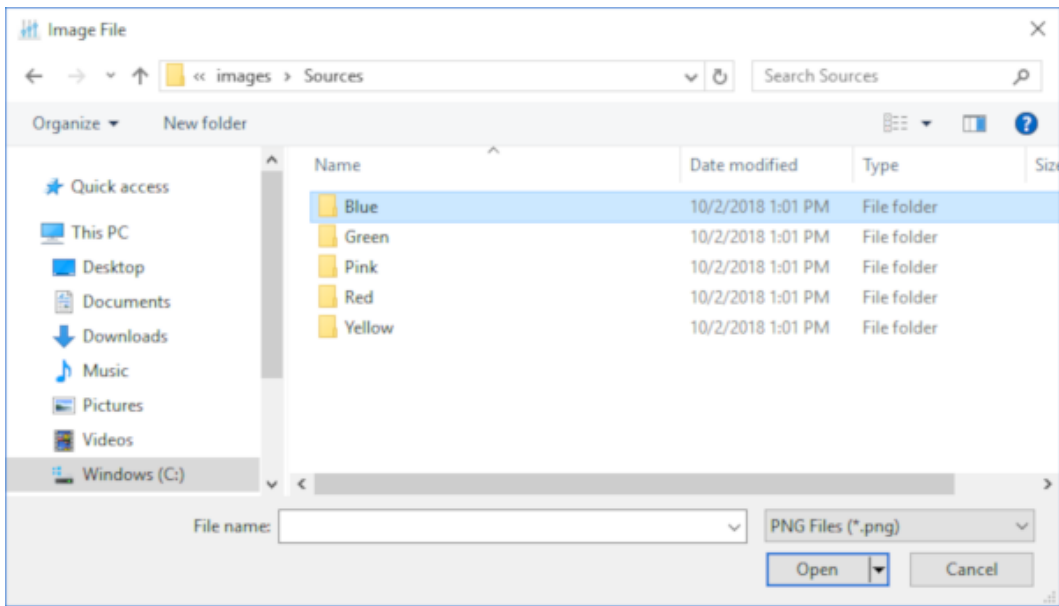
**To place a library image on the canvas,**

1. Follow Steps 1-3 of the Importing Backgrounds procedure (above) and drag the image icon into the canvas.

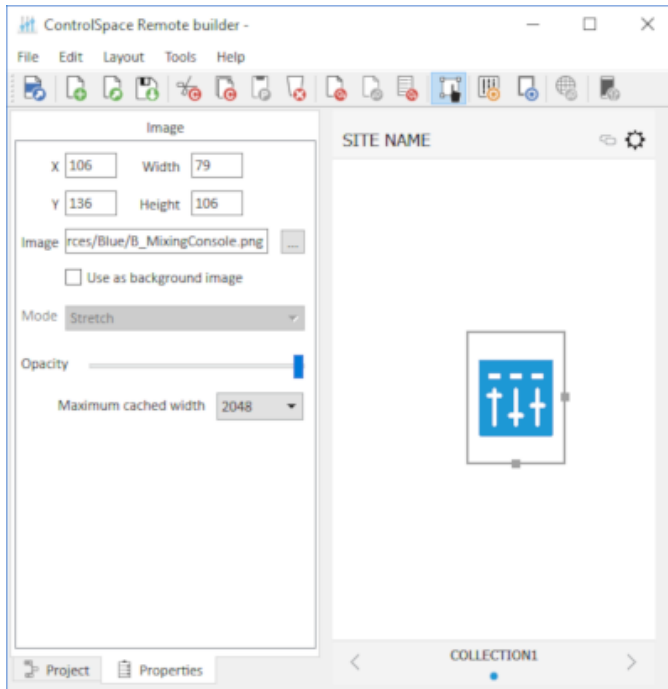
- On the **Properties** tab, navigate to the directory for the **Sources** and **Zones** folders.



- Open the folder that corresponds with the color you wish to use.



4. Select an image and click **Open**. The image will appear on the canvas.

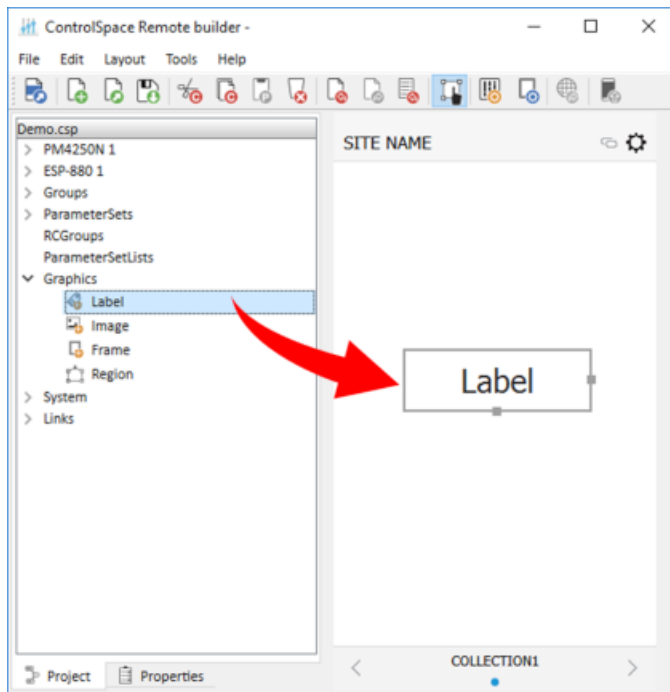


**Note:** Image colors match the skin accent colors selected in the **Canvas Setup** properties.

5. Re-size the image by dragging the handles on the right and bottom edges of the image frame.

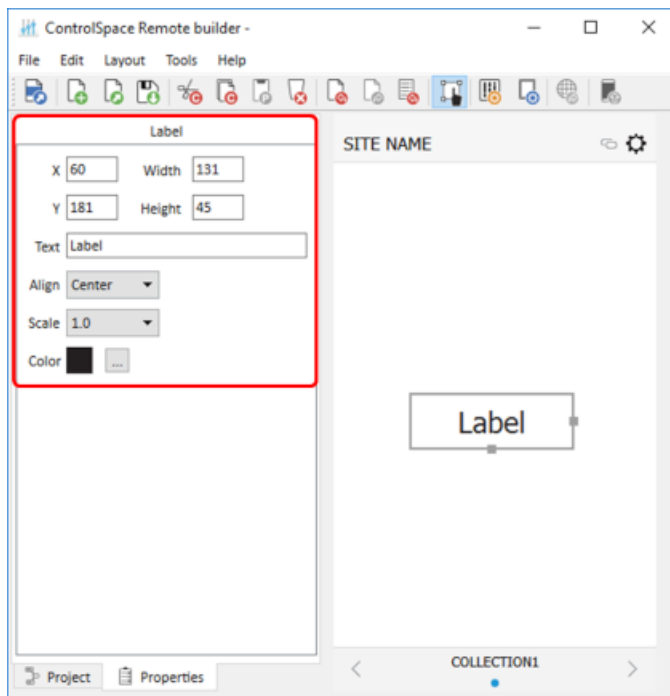
## Adding Text Frames & Labels

Use the **Label** option in the **Graphics** group to place a text field on other graphics and create labels or text strings. Resize labels by dragging the handles on the right and bottom edges of the frame.



Double-click the label in the canvas or click the **Properties** tab to display the label properties.



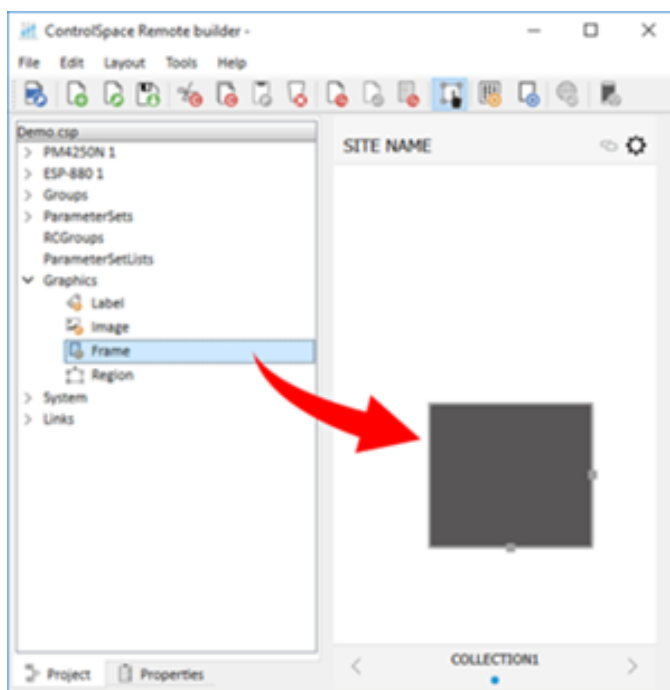


Label properties include the following parameters:

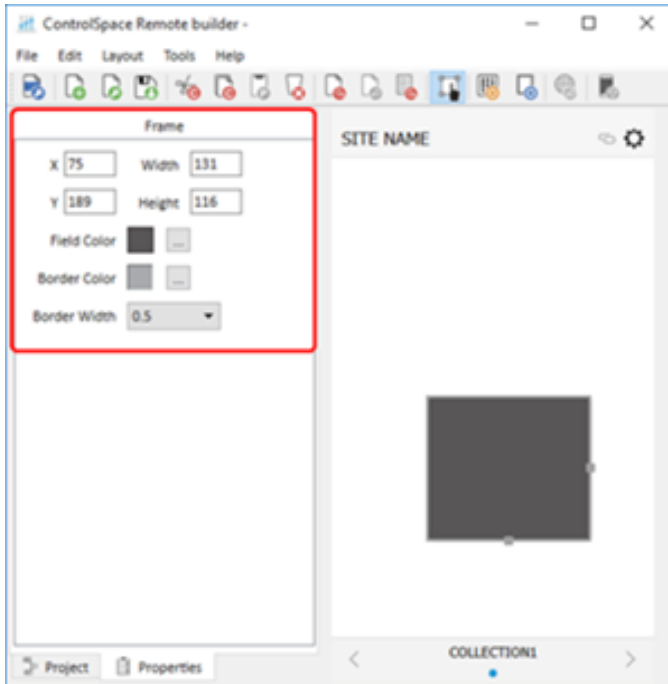
- **X/Y:** Specifies the X/Y coordinates of the upper-left corner of the label.
- **Width/Height:** Specifies the width and height of the label.
- **Text:** Provides an area in which to enter text for the label.
- **Align:** Positions the text left, right, or center.
- **Scale:** Changes the size of the text.
- **Color:** Changes the color of the text.

## Adding a Frame

Use the **Frame** option in the **Graphics** group to add a rectangular shape to your design. Resize frames by dragging the handles on the right and bottom edges of the frame.



Double-click the frame in the canvas or click the **Properties** tab to reveal the frame properties.

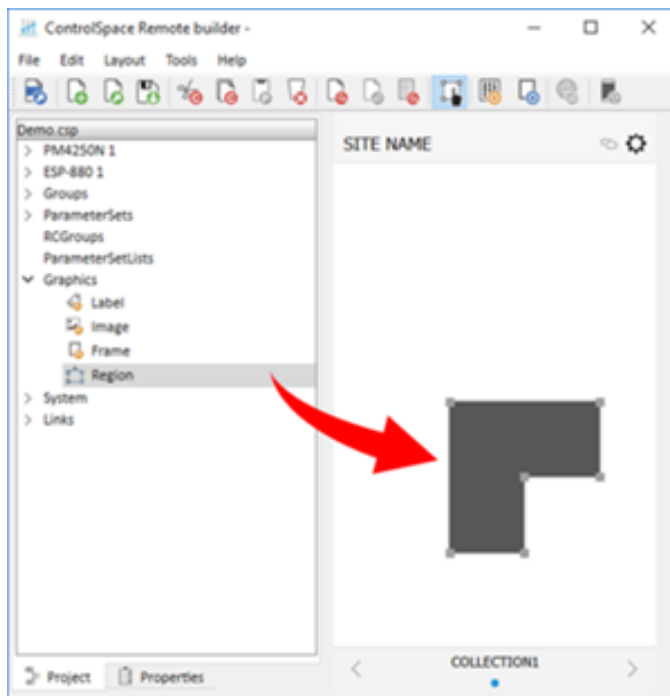


Frame properties include the following parameters:

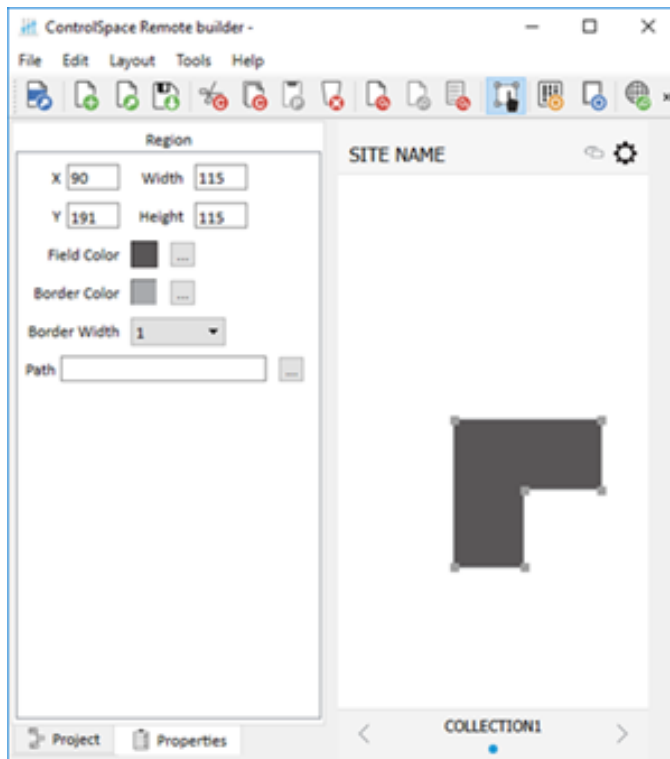
- **X/Y:** Specifies the X/Y coordinates of the upper-left corner of the frame.
- **Width/Height:** Specifies the width and height of the frame.
- **Field Color:** Changes the fill color.
- **Border Color:** Changes the color of the border.
- **Border Width:** Changes the line weight of the border.

## Adding a Region

Use the **Region** option in the **Graphics** group to add a customizable polygon to the canvas. A region can be linked to an existing control panel. Reshape regions by dragging the handles on the edges of the frame. To add another handle, press and hold the Ctrl key, place the cursor where you want the handle, and then click the mouse button. To remove a handle, press and hold Ctrl+Shift, and then click the handle you want to remove.



Double-click the region in the canvas or click the **Properties** tab to reveal the region properties.



Region properties include the following parameters:

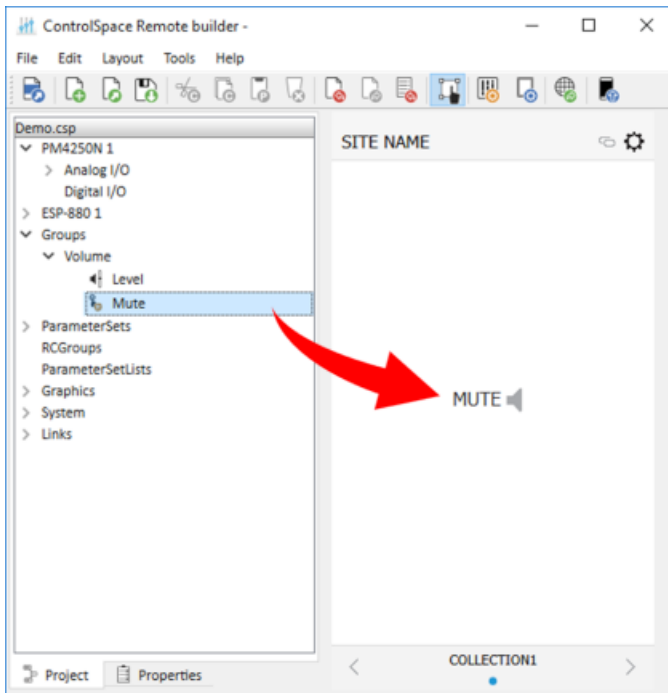
- **X/Y:** Specifies the X/Y coordinates of the upper-left corner of the region.
- **Width/Height:** Specifies the width and height of the region.
- **Field Color:** Changes the fill color.
- **Border Color:** Changes the color of the border.
- **Border Width:** Changes the line weight of the border.
- **Path:** Links the region to an existing control panel.

## Creating Custom Controls

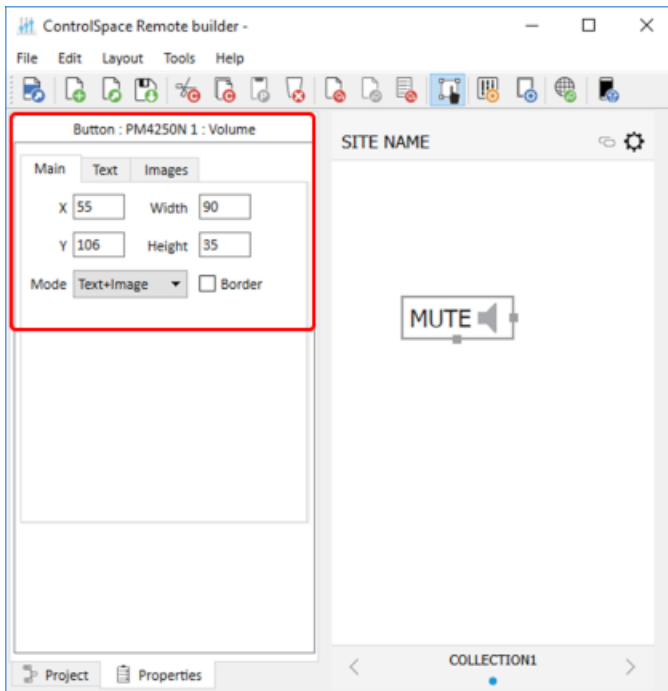
Project controls listed in the tree view can be dragged into a custom panel design. The appearance of buttons, sliders, and drop-lists can be changed using their individual properties.

### Custom Buttons

1. From the **Project** tab, drag a button into the canvas.
2. Using the handles on the right and bottom edges, resize the button.



3. To access the button properties, double-click the button or click the **Properties** tab.

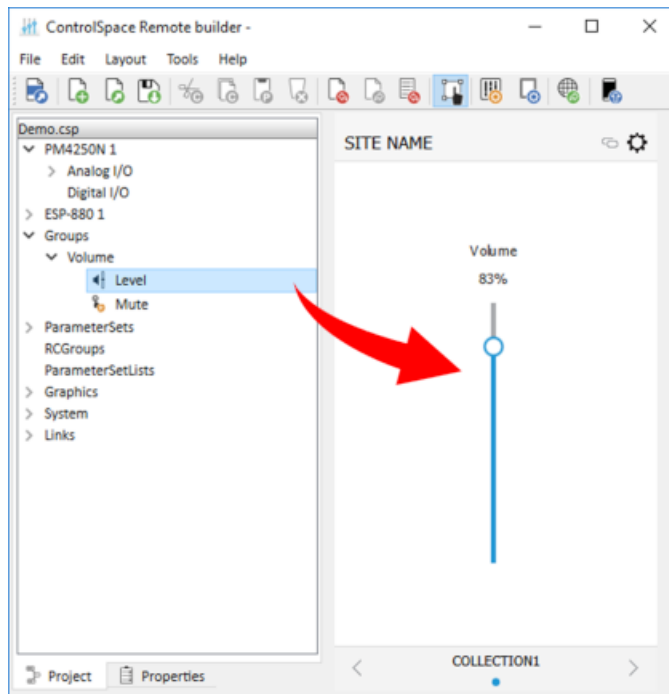


4. Adjust the properties as desired, using the options available in the tabs:

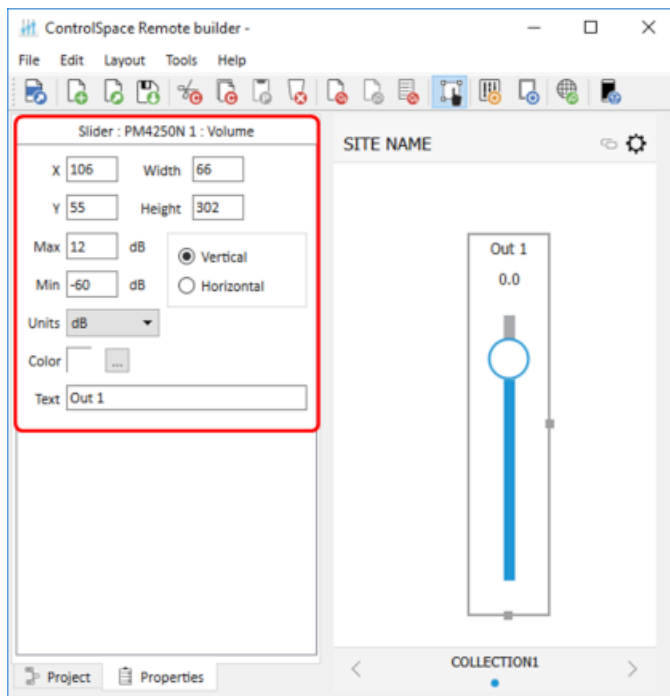
- **Main** tab:
  - **X/Y:** X/Y coordinates of the upper-left corner of the frame.
  - **Width/Height:** width and height of the button.
  - **Mode:** selects how the button appears: Text, Image, or Text+Image (both).
  - **Border:** when checked, places a border around the button.
- **Text** tab (only active in Text and Text+Image modes):
  - **Text:** allows text entry for button labels when mute is off or on.
- **Images** tab: (only active in Image and Text+Image modes)
  - **Image:** specifies whether to use the default icon or a custom image.
  - **Off:** specifies image when mute is off.
  - **On:** specifies image when mute is on.

## Custom Sliders

1. From the **Project** tab, drag a slider into the canvas.
2. Using the handles on the right and bottom edges, re-size the slider.



3. To access the slider properties, double-click the slider or click the **Properties** tab.

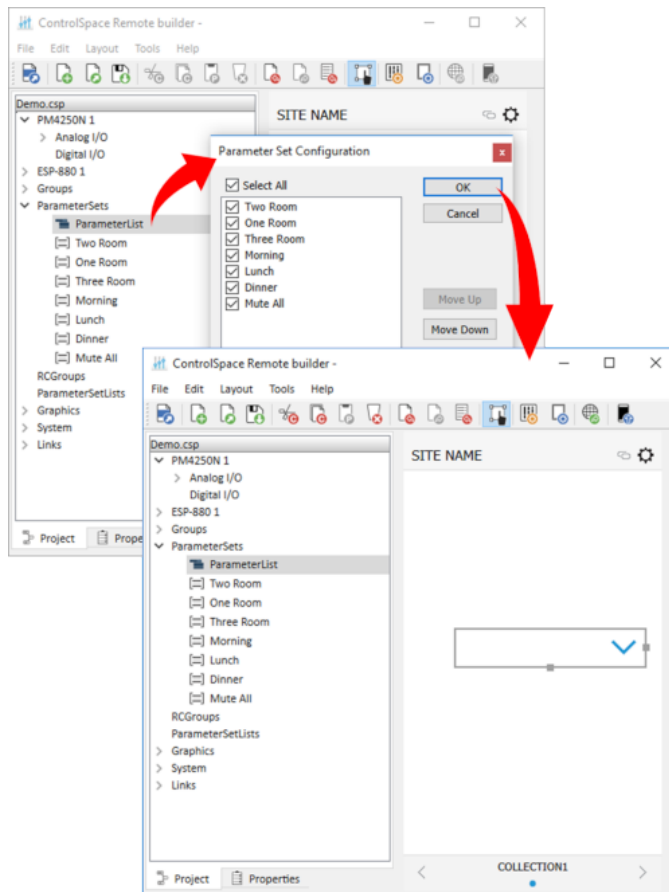


4. Adjust the properties as desired:

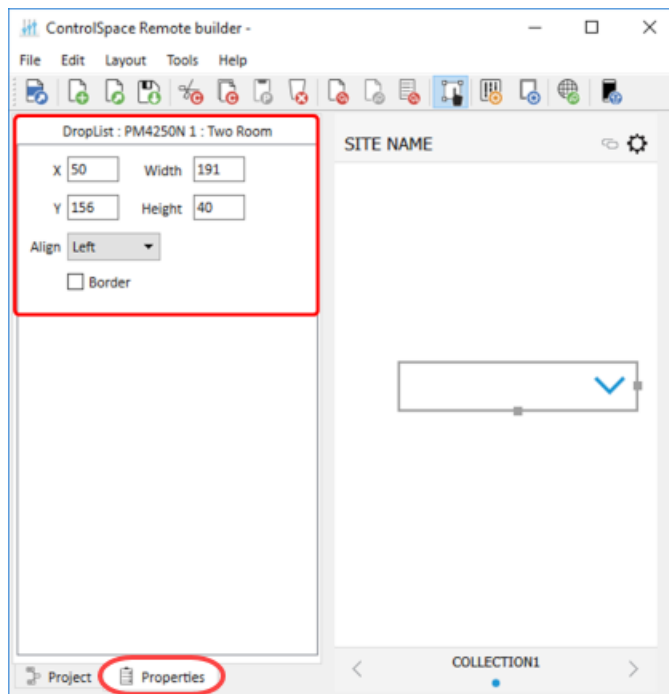
- **X/Y:** X/Y coordinates of the upper-left corner of the frame.
- **Width/Height:** width and height of the slider.
- **Max:** selects the maximum value on the slider.
- **Min:** selects the minimum value on the slider.
- **Vertical/Horizontal:** sets the orientation of the slider as vertical or horizontal.
- **Units:** specifies dB or Percent for volume measurement.
- **Color:** selects the color of the slider.
- **Text:** allows entry of a label for the slider.

## Custom Drop-lists

1. From the **Project** tab, drag a list into the canvas.
2. Select the items you want in the list and click **OK**.



3. Using the handles on the right and bottom edges, resize the drop list.
4. To access the drop-list properties, double-click the list or click the **Properties** tab.



5. Adjust the properties as desired:

- **X/Y:** X/Y coordinates of the upper-left corner of the frame.
- **Width/Height:** width and height of the slider.
- **Align:** positions the list Left, Center, or Right
- **Border:** when checked, places a border around the button.

## Custom RCGroups

1. In the **Project** tab, expand the device with the desired room controls. Drag the desired control(s) for one of the rooms onto the canvas. (Controls for standard room combiner blocks [StRC] will be under the **Blocks** item for the device.)
2. Create an additional panel for each room you want to add:
  1. Click the **Layout** icon in the toolbar, or click **Tools > Layout**.
  2. In the **Layout** window, select the desired collection, and then click **Add Panel**.
  3. In the **Select a Template** window, select **Blank Panel**, and then click **OK**.
  4. In the **Layout** window, click **OK**. Below the canvas, there should be an additional dot in the **Status** bar to indicate a new panel.
  5. In the **Project** tab, expand the device with the desired room controls. Drag the desired control(s) for one of the rooms onto the canvas.
3. Repeat Step 2 to create a separate panel for your room-combining controls.
4. On the **Project** tab, expand the **RCGroups** item, and then expand the **RCGroup** with the desired rooms.
5. Drag the **Combination Control** for the RCGroup onto the canvas. This is the selector for each room combination.
6. Drag the desired control(s) for each room you created in Steps 1-2 onto the canvas.
  - **Room Name:** the name of the room in the RCGroup.
  - **Active Combination:** a field that shows the names of the other rooms in the combination.
  - **Room Layout:** an adjustable polygon representing the layout of the room. Drag a handle on the edge of the layout to move it. Press and hold the Ctrl key and click an edge of the polygon to add another handle at that location. Press and hold Ctrl+Shift and click a handle to remove it.
7. To access the properties of an item in any of the panels, double-click the item or click the **Properties** tab. Adjust the properties as desired.

RCGroup items include the following properties:

- **RCGroup Name:** the properties are identical to those of a label (see Adding Text Frames & Labels in [Creating Custom Layouts](#)).
- **Combination Control:**
  - **Y:** the Y coordinate of the upper-left corner of the selector frame.
  - **Height:** the height of the selector frame.
  - **Side Margins:** the width of the margin on either side of the selector frame.
- **Room Name:** the properties are identical to those of a label (see Adding Text Frames & Labels in [Creating Custom Layouts](#)).
- **Active Combination:**
  - **Y:** the Y coordinate of the upper-left corner of the frame.
  - **Height:** the height of the frame.
  - **Side Margins:** the width of the margin on either side of the frame.
  - **Color:** the color of the text inside of the frame.

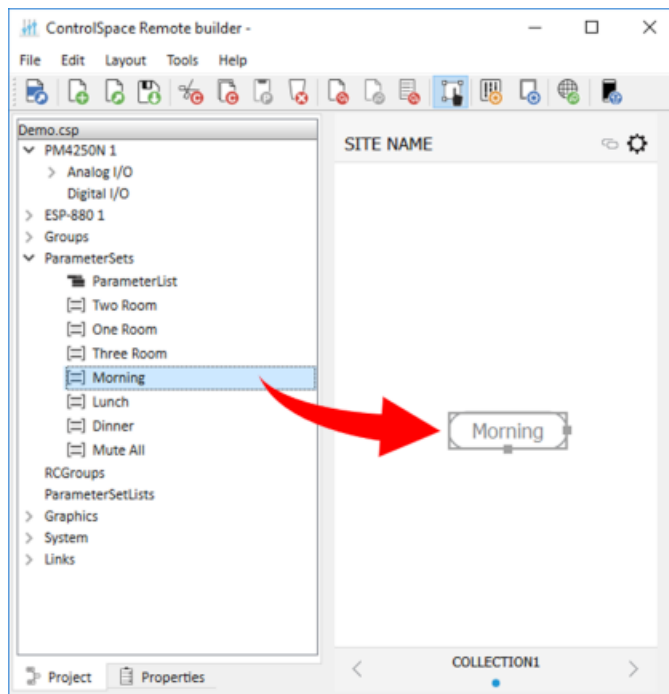


- **Border Color:** the color of the border of the frame.
- **Border Width:** the width of the border of the frame.
- **Separator:** the character(s) that separate the combined room names shown in the frame.
- **Room Layout:**
  - **X/Y:** X/Y coordinates of the upper-left corner of the region.
  - **Width/Height:** width and height of the region.
  - **Opacity:** the opacity of the region.
  - **Border Color:** the color of the border of the region.
  - **Border Width:** the width of the border of the region.

Other controls are described elsewhere in this help topic: [Custom Buttons](#), [Custom Sliders](#), [Custom Drop-lists](#), [Custom Parameter Sets](#), [Custom Parameter Set Lists](#), [Custom Links](#), [Custom Setup Button](#), or [Custom Remote Connection Indicator](#).

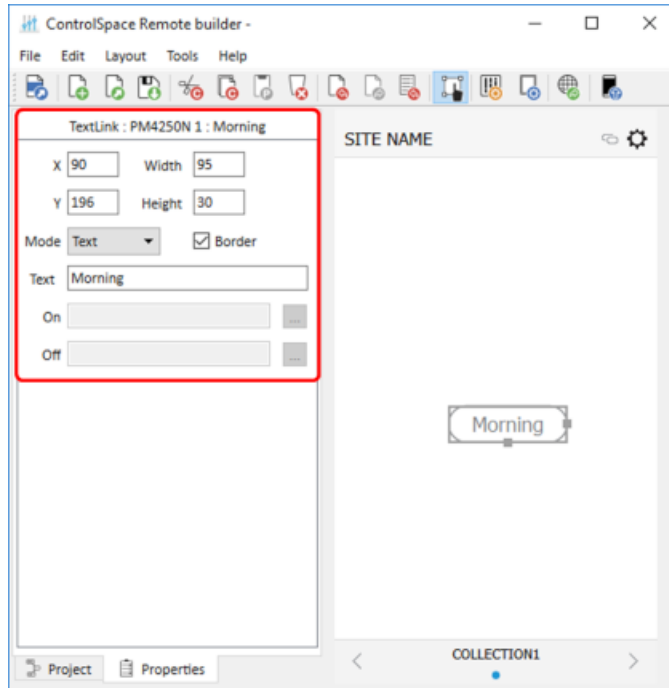
## Custom Parameter Sets

1. From the **Project** tab, expand **ParameterSets** and drag a parameter set onto the canvas.



2. Using the handles on the right and bottom edges, resize the button.

3. To access the properties, double-click the button or click the **Properties** tab.



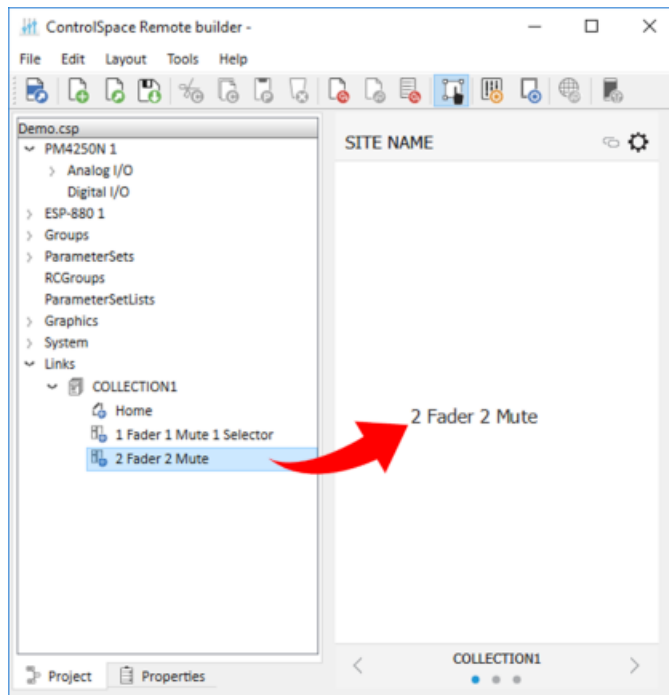
- Adjust the properties as desired:
  - **X/Y:** X/Y coordinates of the upper-left corner of the frame.
  - **Width/Height:** width and height of the button.
  - **Mode:** selects how the button appears: text, or text+image.
  - **Border:** when checked, places a border around the button.
  - **Text:** in Text mode, allows text entry for a button label.
  - **On/Off:** in Image mode, allows an image selection for both on/off states of the button.

## Custom Parameter Set Lists

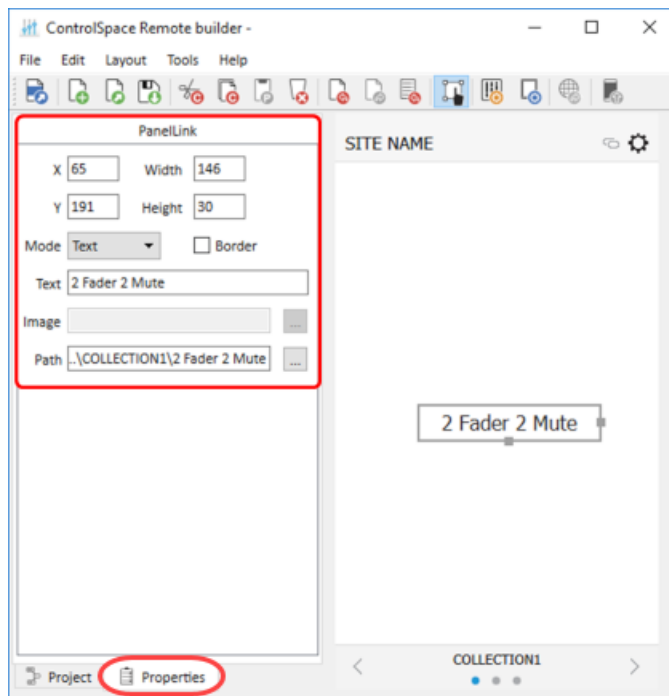
1. From the **Project** tab, expand **ParameterSetLists** and drag a parameter set list onto the canvas.
2. Using the handles on the right and bottom edges, resize the button.
3. To access the properties, double-click the button or click the **Properties** tab.
4. Adjust the properties as desired:
  - **X/Y:** X/Y coordinates of the upper-left corner of the frame.
  - **Width/Height:** width and height of the button.
  - **Align:** selects the horizontal alignment of the text in the button.
  - **Border:** when checked, places a border around the button.

## Custom Links

1. From the **Project** tab, expand **Links**, expand a collection, and then drag a control panel onto the canvas.



2. Using the handles on the right and bottom edges, re-size the button.
3. To access the properties, double-click the button or click the **Properties** tab.

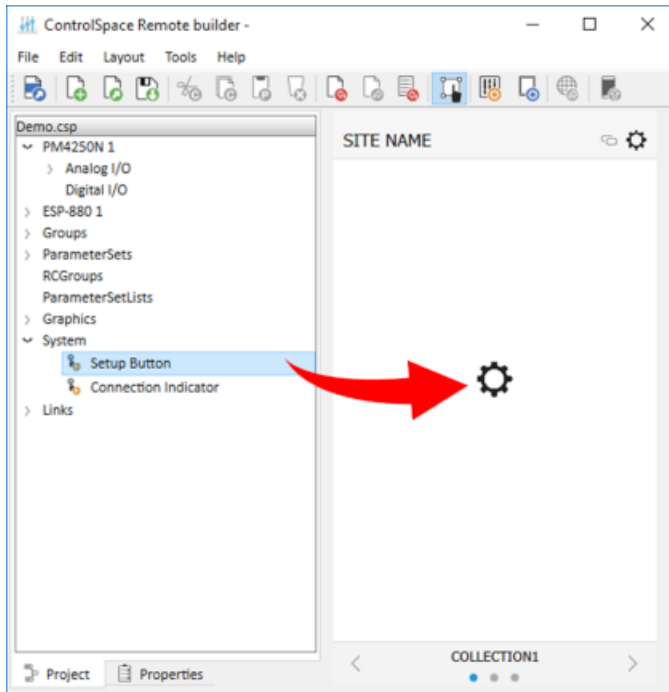


4. Adjust the properties as desired:
  - **X/Y:** X/Y coordinates of the upper-left corner of the frame.
  - **Width/Height:** width and height of the button.
  - **Mode:** selects how the button appears: text or image.
  - **Border:** when checked, places a border around the button.
  - **Text:** in Text mode, allows text entry for a button label.

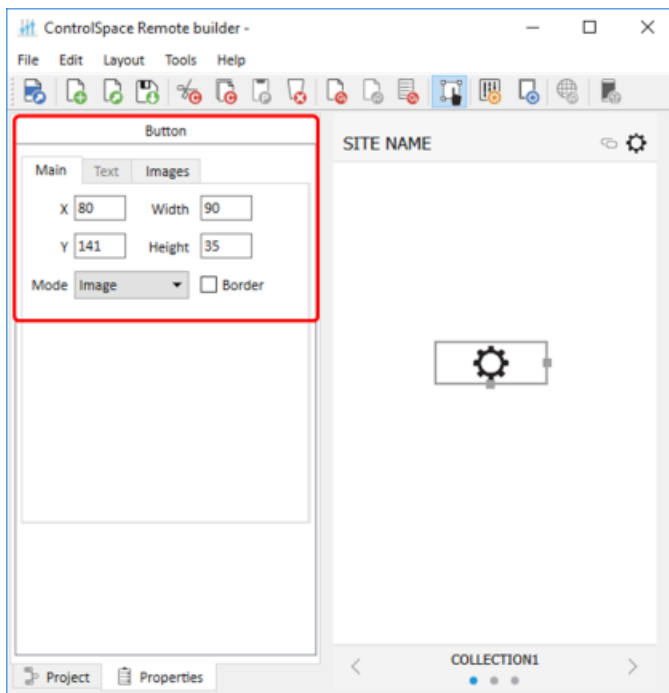
- **Image:** in Image mode, allows selection of an image to use on the button.
- **Path:** links the button to an existing control panel.

## Custom Setup Button

1. From the **Project** tab, expand **System**, and then drag a **Setup Button** onto the canvas.



2. Using the handles on the right and bottom edges, resize the button.
3. To access the properties, double-click the button or click the **Properties** tab.



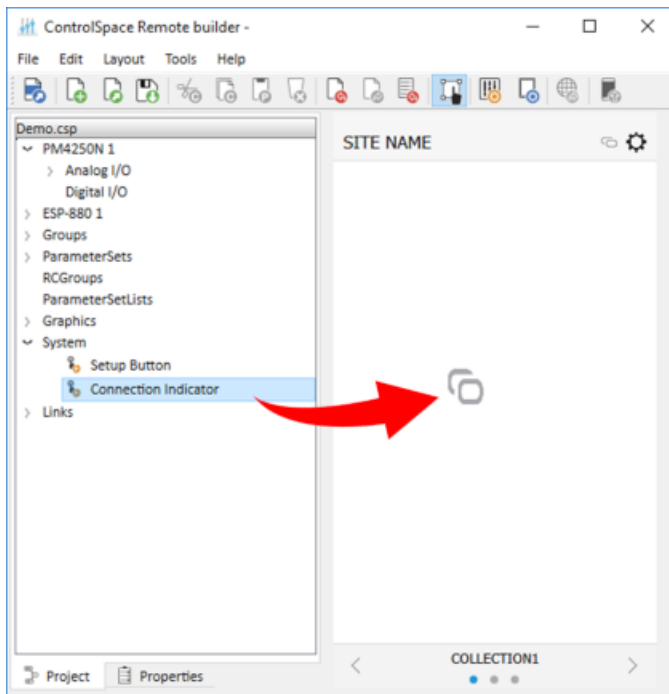
Adjust the properties as desired, using the options available in the tabs:

- **Main** tab:

- **X/Y:** X/Y coordinates of the upper-left corner of the frame.
- **Width/Height:** width and height of the button.
- **Mode:** selects how the button appears: Text, Image, or Text+Image (both).
- **Border:** when checked, places a border around the button.
- **Text** tab (only active in Text and Text+Image modes):
  - **Text:** allows text entry for a button label.
- **Images** tab (only active in Image and Text+Image modes):
  - **Image:** specifies whether to use the default icon or a custom image. If you select **Custom**, locate the desired image by using the field that appears below the drop-down menu.

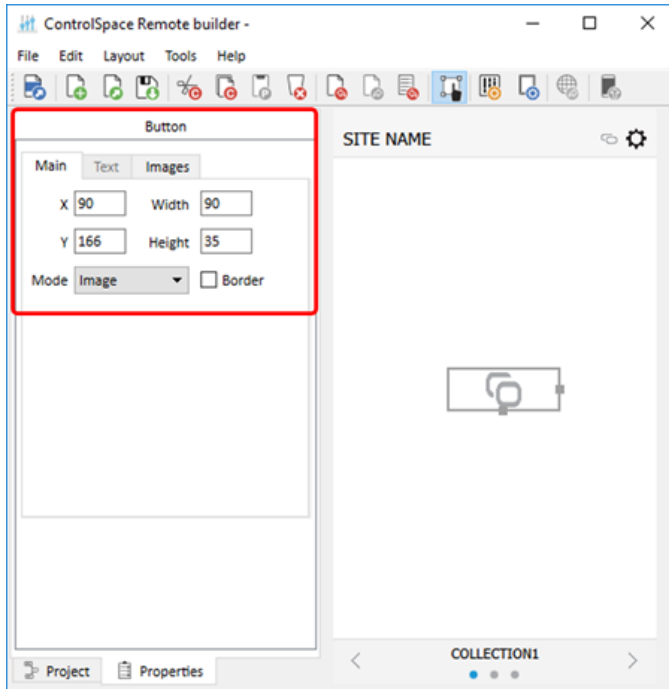
## Custom Remote Connection Indicator

1. From the **Project** tab, drag a connection indicator button from **System** onto the canvas.



2. Using the handles on the right and bottom edges, resize the button.

3. To access the properties, double-click the button or click the **Properties** tab.



4. Adjust the properties as desired, using the options available in the tabs:

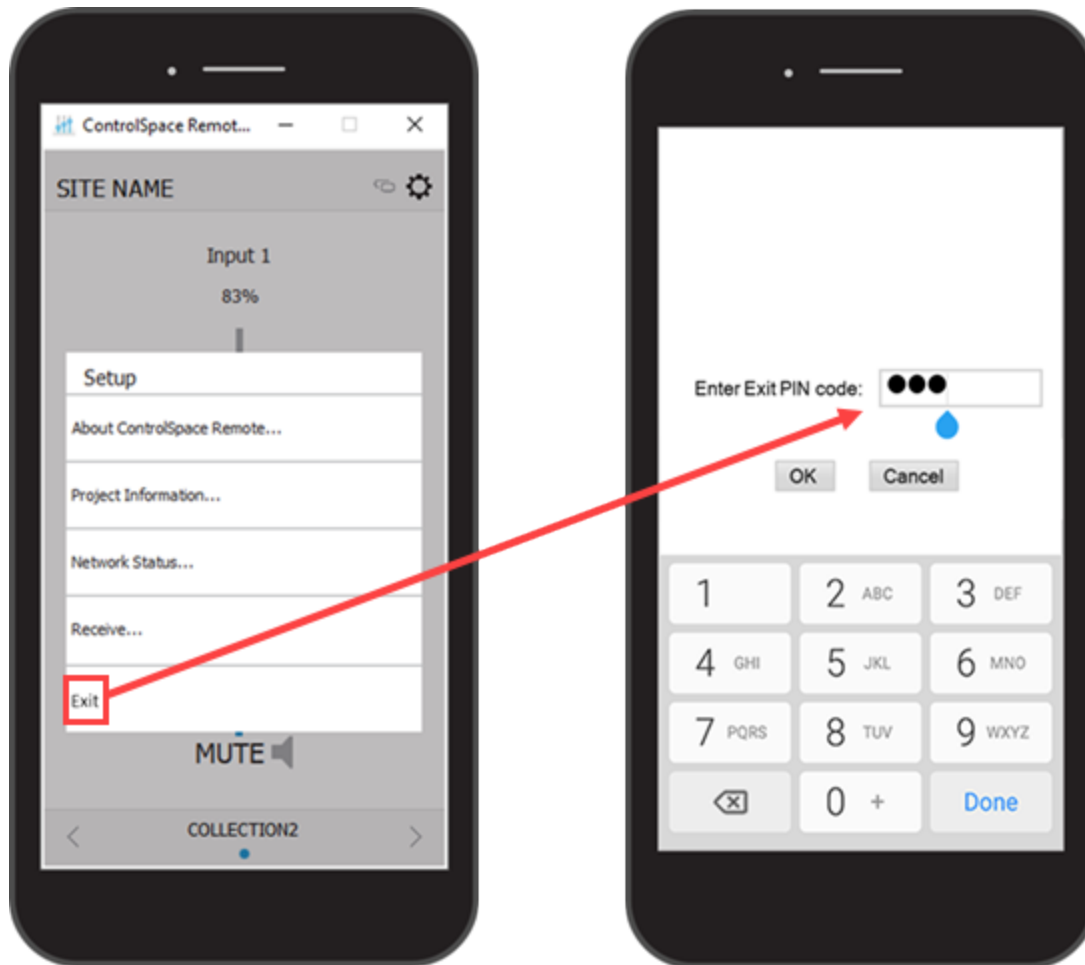
- **Main** tab:
  - **X/Y:** X/Y coordinates of the upper-left corner of the frame.
  - **Width/Height:** width and height of the button.
  - **Mode:** selects how the button appears: Text, Image, or Text+Image (both).
  - **Border:** when checked, places a border around the button.
- **Text** tab (only active in Text and Text+Image modes):
  - **Text:** allows text entry for button labels when the connection is off, on, or partial.
- **Images** tab (only active in Image and Text+Image modes):
  - **Image:** specifies whether to use the default icon or a custom image.
  - **Off:** specifies image when the remote connection is off.
  - **On:** specifies image when the remote connection is on.
  - **Partial:** specifies image when the remote connection is partially active.

## Setting an Exit PIN for MLock-Enabled Devices

By default, users are unable to exit the CSR Client application on certain Android devices that are MLock-enabled.

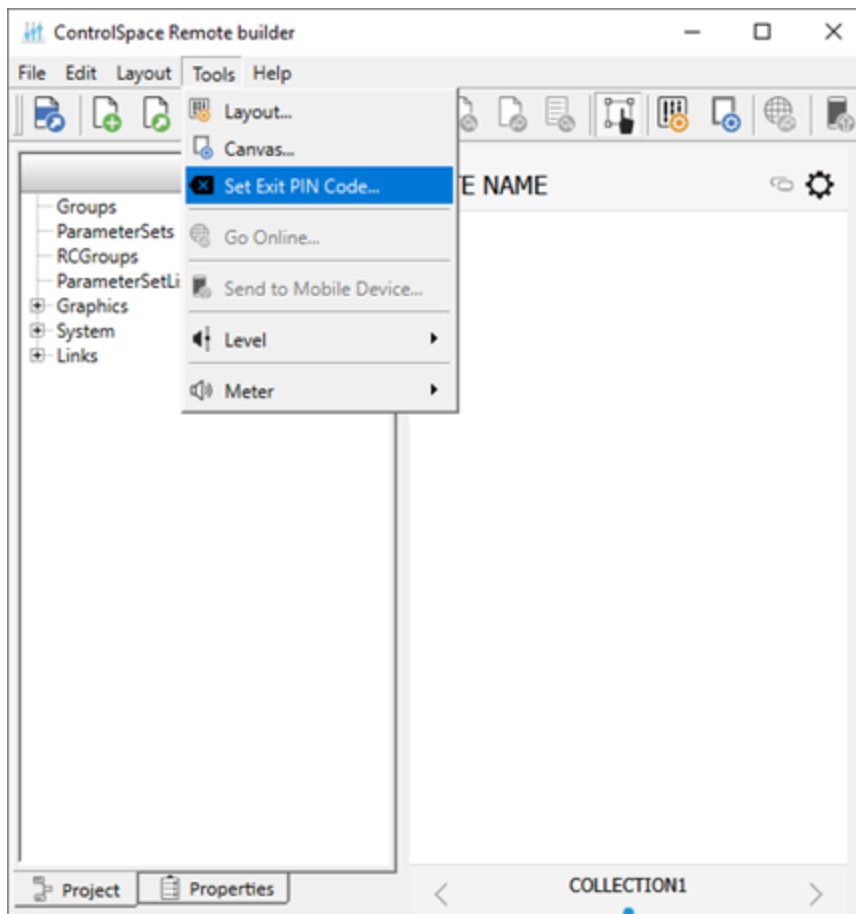
MLock is a preinstalled application, developed by Mimo Monitors, that “locks down” a Mimo Android device by securely disabling physical buttons and the touchscreen. MLock places the device in Kiosk mode to restrict functionality, including the ability to exit the application.

You can set an Exit PIN in CSR Builder , and then provide that PIN to users to allow them to exit the CSR Client application on an MLock-enabled device. Users will be prompted to enter the PIN when they select **Exit** from the **Setup** menu:



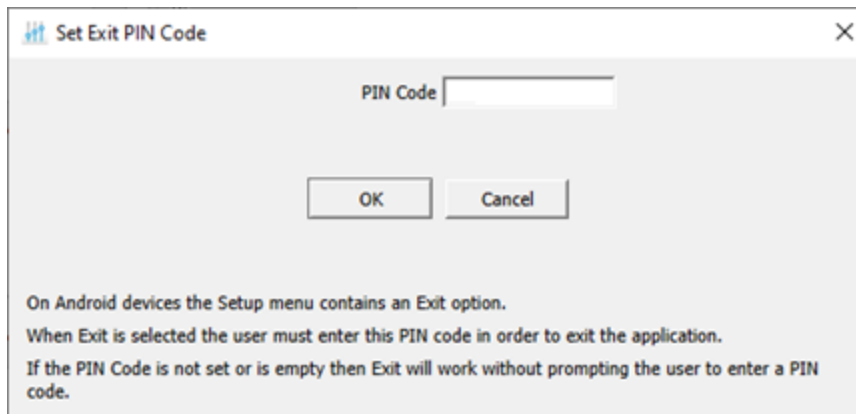
### To Set an Exit PIN in CSR Builder :

1. From the **Tools** menu, select **Set Exit PIN Code**.



2. In the **Set Exit PIN Code** dialog box, enter a PIN, and then click **OK** to save it.

**Note:** The PIN must be numbers only (no letters or symbols), with a maximum length of 25 digits.



**Note:** If you leave the **PIN Code** field blank, all users will be able to exit the application without being prompted for a PIN.

3. Save the CSR Builder project file and [send it to the mobile device](#).
4. Provide the PIN to any users to whom you want to provide the ability to exit the CSR Client application.

**Note:** The PIN code is empty in projects created in CSR Builder version 2.8 or previous.